

FEN EDGE News

Community Association

Spring/Summer 2015

*Make your
vote count*

*DIARY DATE!
Family Festival
In Cottenham*

Know your councils

INSPIRATIONAL

Summer learning

Model: Emily Grace

Need glasses?

Save your money **BUY DIRECT!**

(frame & lenses)

Single Vision from **£9.00***

Bifocals from **£39.00***

Varifocal from **£59.00***

- Specs repairs & emergency Supply*
- Free NHS Specs*
- Specs for all sports
- Reglaze your own frame save ££'s*
- Premium frames & lenses at low prices
- Large selection of specs frames
- Prescription Sunspecs from £49.00*
- Good customer service, no pressure selling

*High/complex
prescription*
SAVE UP TO 75%



Why pay more?



*T & C's apply, phone for details. For customers aged 16 and over only

**Bring your new
prescription and
start saving:**

ALL EYES Specs Makers

20 Norman Way Ind. Park, Over,
Cambridge CB24 5QE

**Tel: 01954 231545
or 07824 706969**

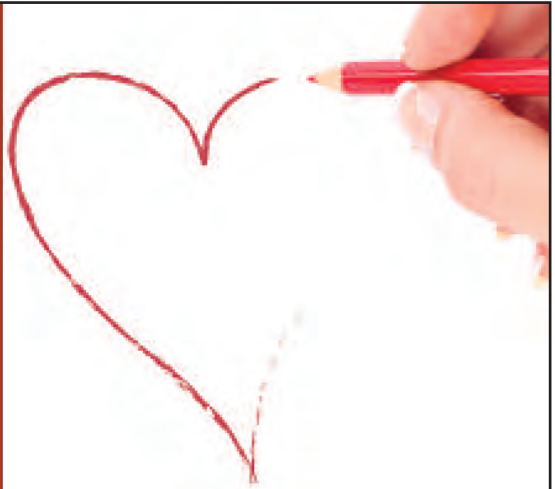
Open: Mon-Fri 9.00am to 5.00pm

Please ring for an appointment



www.all-eyes.co.uk

***“Now I can
be there for
my family
just when
they need
me most.”***



Since 1989, we've helped more than 150,000 families like yours plan for the future with our friendly, money-saving service & professional expertise.

- Wills, Trust & Probate specialists
- Society of Trust & Estate Practitioners (STEP) qualified solicitors
- Full professional indemnity insurance

Member,
Society of Will Writers &
Professional Association
of Legal Services



Just Wills (Cambridge) is the local office of
Just Wills & Legal Services Ltd.
Just Wills (Cambridge), St John's Innovation Centre
Cambridge CB4 0WS

**Put your love
in writing ...**

- ✓ Protect your children & partner with a Will
- ✓ Set up a Trust for a disabled child
- ✓ Protect your family's property & assets
- ✓ Minimise care home fees & funeral costs
- ✓ Reduce Inheritance Tax & Probate fees
- ✓ Look after elderly parents with
Lasting Powers of Attorney

For a FREE home consultation

Phone: 01223 655646

Mobile: 07930 197432

Email: info@justwillscambridge.co.uk

... talk to Just Wills today!

In Your Fen Edge News

Spring/Summer 2015

Message from FECA chair.....	4
Plans for the FEFF weekend.....	5
Cottenham directory.....	6
Fen Edge Events Diary.....	7
Cottenham Theatre Workshop's spring production.....	9
Dementia care in focus.....	11
Cottenham Fun Run.....	13
Rampton news and directory.....	15
In the garden: adding lushness.....	17
Fen Edge parish councils.....	19
Know Your Councils.....	21
Fen Edge miscellany.....	23
16-page summer classes pullout.....	25
GP referral classes.....	36
Activities for Children.....	41
Ballet Pointes.....	41
Waterbeach news and directory.....	43
The election and voting.....	49
Healthcare News.....	50
Cottenham Community Centre activities.....	53
Landbeach news and directory.....	55
HOW TO ADVERTISE IN FEN EDGE NEWS.....	58
Willingham news and directory.....	59

ADDING WARMTH & VALUE TO YOUR HOME

A fireplace is at the very heart of a room. It radiates a warmth, comfort and style that is unparalleled and creates an inviting and homely ambience.

At Ivett & Reed we specialise in creating the kind of distinctive fireplaces which add style, warmth and value to your home.

We have an extensive range of fireplaces designed to suit any room and style – from the most contemporary to the most traditional. All our fireplaces are custom made by our highly skilled craftsmen using only the finest quality materials sourced from all over the world.

Take a look at our extensive showroom or our comprehensive website to see our wide range of fireplaces and associated fixtures and fittings. ■



IVETT & REED
QUALITY SET IN STONE



www.ivettandreed.co.uk

615 NEWMARKET RD, CAMBRIDGE CB5 8PA Tel: 01223 213500

MESSAGE FROM THE FECA CHAIR

One of the good things about living in the Fen Edge Patch is the sense of community. The aims of the Fen Edge Community Association include helping to promote the many groups and organisations in the five villages that have a role to play in building the community, strengthening the ties between young and old and establishing a positive environment for all who live there. It is great that there is so much is going on but I want to ensure that we all know about it and can share in it.

At FECA we have been able to assist various projects, such as making a contribution to the new youth club at Willingham – which you can read about on page 59. The Fun Run, of which FECA is a co-sponsor with Malary, will this year benefit a local initiative at Cottenham Primary School, to give the youngsters an opportunity to get involved in music – see page 13.

We want to do more to spread the message of community. If you are involved with a group or organisation in any of the Fen Edge Villages why not consider becoming a FECA member?

Annual rates are very reasonable and it may help you attract others. We can help promote what you're doing by including your events in the Fen Edge News, by adding you to our website www.fenedge.co.uk or on our Facebook page – www.facebook.com/fenedgenews. Why not have a look now?

And even better, come along to our AGM on 6th May in the wonderful Tony Cooper Suite at the Cottenham Village College, join in the discussion, have a drink and tell us how FECA might help you.

Our issue covers the spring and summer months and all that's going on, from the election in May to the tempting array of classes being offered at CVC plus the very popular adults-only Cottenham Summer School. Not all the details of the FEFF have been finalised, but there is a taster and I look forward to seeing you there in June. Have a good summer.

Eileen Wilson
Chairfenedge@gmail.com

FEN EDGE FAMILY FESTIVAL

Plan Your Visit

For three days in June Cottenham will be a hive of pleasure-seeking activity, involving groups from the Fen Edge and newcomers. Here, gleaned from the hard-working Festival Committee, are some of the known plans to note on your calendar.

But there's much more in the pipeline, so keep up to date by regularly visiting www.fenedgefestival.co.uk or Facebook: www.facebook.com/FenEdgeFamilyFestival.

To book a pitch contact stalls@fenedgefestival.co.uk

FRIDAY 19TH JUNE

Morning: Cottenham Toy Library kick off the Festival with their Pre-School Fun Day.

Afternoon: Bingo in the main marquee.

Evening: Cottenham Primary School's PTCA Summer dance – the ever popular band, Mind The Gap, make their welcome return. Tickets on sale from the school or CVC from 5th May. Book that babysitter now!

SATURDAY 20TH AND SUNDAY 21ST

Main marquee: Churches together in Cottenham will run their lively and popular holiday club mornings which are suitable for children of primary school age.

Saturday evening, free Junior Disco, with refreshments on sale provided by Twinkle Star Children's Trust.

The Green: Saturday night's free entertainment –

dance and sing along with Shredded Beat.
Sunday afternoon: don't miss the exuberant playing of Cottenham Brass, and the Fen Edge orchestra.

Sunday night, swing along to Barry Palser's Savoy Jazz Band which will bring the weekend's proceedings to a classy close.

The Venue: a hit in 2013 with its mix of entertainment and beer, so it's back for its second festival. This is a call to all performers to entertain on stage once again: from 10am until 5pm on both days. We are seeking singers, jugglers, magicians, viola (or other instrument) players and comedians. If you have a secret desire to perform don't keep it to yourself, your hairbrush, or your other half! Your new future awaits. . . just email us on activities@fenedgefestival.co.uk
[Cottenham Community Centre](http://www.fenedgefestival.co.uk) will be open both days (see website www.cottenhamcc.org

SCULPTURE COMPETITION

No FEEF would be complete without this much anticipated and hotly contested competition and you have time to let your imagination take off! The theme is 'Space' – perhaps you'll create a sculpture as big as Jupiter, as shiny as the sun, as techno-based as a rocket, as wild as an alien. . . or anything else that inspires you. The organiser is Sheila Gosling so if you have any questions about entry, contact her on Sheeba3434@hotmail.com

ASTRONOMY ROADSHOW

The UK's Largest Mobile Planetarium will be in the Sports Hall at Cottenham Village College Sports Centre. Called The Planetarium, it is an educational theatre that explores many aspects of space and will fascinate young and old alike. Children from Years 8 and 10 at CVC will be first to experience the wonders on the Friday, and on the Saturday the general public will have set show times for which booking is essential. They are sure to be very popular, so keep your eyes on two websites www.fenedgefestival.co.uk & www.cvcweb.net for details of how to book.
SHOW TOPICS (not all shows include

everything): Space News, Our Solar System, Phases of the Moon, Eclipses, The Seasons and Climate Change, Orbits of Satellites & Planets, Communications from Space, The Milky Way and other Galaxies, The Doppler effect, Greek Constellations, Light, Distance, Birth of Stars, Light Pollution, Firework Display and much more!

NEW FOR 2015! TWO-DAY ART EXHIBITION

There will be an exciting new Art Exhibition in the main hall of Cottenham Village College and it is open to everyone. Exhibiting fees are £4 per piece of artwork with a maximum of three entries per artist. We have joined forces with two talented community groups: CAYAC, the "Cambridge Area Young Artist Competition" and the Cottenham Village College Adult Learning department. Both groups will be exhibiting.

For full submission guidelines and an entry form please contact Jo by email: jo.bigger@gmail.com



OPEN DAY AT CVC'S 6TH FORM

The college's fabulous 6th form building with an amazing atrium at its heart was opened in September 2011. This wow factor atrium adjoins the training kitchen, hair and beauty salon and the media suite and the students will be on hand to display their talents. Come along on Saturday 20th June and enjoy:

- A café with food and drink provided by the College's Catering company 'Pabulum Catering'
- Art displays by students
- The Hair and Beauty Salon will be open to Festival visitors.

The Fen Edge Family Festival 2015 - are you ready?

Remember the road closure

The road on one side of the Village Green will be closed during the festival. If you want to drive to Histon or Rampton, go via Lambs Lane and Rampton Road to bypass the Green

COTTENHAM DIRECTORY

Brownies / Rainbows / Guides

Dani Wykes 01954 250324

Catholic Church

Fr. Patrick Cleary 01223 704640

Community Beat Office, Police

..... 101

Cottenham All Saints Church

Rev Kylie Hodgins 01954 250454

Cottenham Baptist Church

Church Office 01954 252378

Cottenham Bowls Club

Glen Clarke 01954 250085

Cottenham Brass Band

Diana Braverman 01223 881644

Cottenham Care Cars

Gerry Brett 01954 251929

Cottenham Community Centre

..... 01954 202109

Cottenham Day Centre

Mrs M Collins 01954 200873

Cottenham District Nurse

..... 01223 726469 opt 2

Cottenham & District Ploughing Soc

Robert Clarke 01954 250443

Cottenham Gardeners Club

Colin Ward 01954 252190

Cottenham Library

..... 0345 045 5225

Cottenham Newsletter

Eddie Murphy 01954 251700

Cottenham & Rampton R.B.L

Ann Scott 01954 251468

Cottenham Salvation Army

Tori Richardson 07709 652101

Cottenham Seniors Club

Beryl Hayward 01954 252754

Cottenham Tennis Club

Bruce Hutchison &
Paul Dixon info@cottenhamtennis.co.uk

Cottenham Theatre Workshop

Sue Macdonald 01954 252329

Cottenham Toy Library

..... info@cottenhamtoylibrary.co.uk

Cottenham V.C. Sports Centre

Chris Smith 01954 288760

Cottenham Village Society

Glynis Pilbeam 01954 251544

Cottenham Village College

Community Office 01954 288751

Cottenham Village Design Group

Steven Poole 01954 203961

Cottenham Women's Institute

Margaret Jeeps 01954 250841

Mobile Warden Service

..... 01954 200080

GIUSEPPE PIRAN

SPECIALIST PAINTERS & DECORATORS



All aspects of interior and exterior painting
Local, professional, qualified tradesmen
Experts in Period home decoration
Residential and Commercial properties
Full Public Liability Insurance
Window-Care repair specialists

w/ gpiran.co.uk t/ 01954 201167

FEN EDGE EVENTS DIARY

What's on and when

27th March to **13th** April, school holidays
28th Repair café, Cottenham Community Centre,
10am–2pm

APRIL

11th Open day Landbeach tithe barn (see p55)
16th FEAG talk: Industrial Archeology in Cottenham, by
Mike Mason. Tony Cooper Suite CVC, 7.30pm
17th Cottenham Village Society talk: The American
Cemetery by Arthur Brookes, Cottenham parish church
hall, 7.45pm
19th Yesteryear Road Run (see p23)
20th Family history drop-in session, Cottenham Library,
7–9pm
21st Cottenham Annual Parish Meeting
23rd World Book Night event at Waterbeach Library
(see p43)
25th Peregrine Recorder Orchestra with soprano and
cello guest performers. In aid of church funds, All Saints
Cottenham, 7.30 (tickets £5 in advance, £7 on door,
£2.50 children)
26th Rampton relay and Fun Run (see p15)
30th Mixed Doubles, Cottenham Theatre Workshop,
CVC, 7.30 (see p9)
30th Landbeach annual parish meeting, village hall,
7.30pm

MAY

2nd Cottenham Fun Run in aid of Cottenham Primary
School Ukuleles Group (see p13)
4th Bank holiday
5th Tickets on sale at CVC for Cottenham Primary
School's PTCA Summer Dance (FEFF)
6th FECA annual general meeting, CVC, 7.30 (see p4)
7th General and council elections (see p49)
9th Annual performance April Burgess Martin's ballet
school. Details from tutusrus@ntlworld.com
8th–10th Walking weekend in the Peak District
(fenedge.footpathgroup@gmail.com). (see p23)
8th VE Day (70 years) celebration, Cottenham
Community Centre, 7.30pm
16th Band of Hope concert (think the Charleston,
flappers, enjoyable, foot-tapping, easy listening – dance
if you want to!), Cottenham Community Centre 8.30pm.
Further information/book tickets: 01954 251202
18th Family history drop-in session, Cottenham library,
7–9pm
20th Willingham Annual Parish meeting
21st FEAG talk: An affluent working class – recent

Roman remains in Soham and Newmarket by Andrew
Peachy. Tony Cooper suite CVC, 7.30pm

22nd to **25th** Fen Edge Twinning Association visit to
Avrillé, France

25th Bank holiday

25th–29th Half term

JUNE

15th Family history drop-in session, Cottenham Library,
7–9pm

19th, 20th, 21st FEN EDGE FAMILY FESTIVAL
Cottenham (see pp4–5)

JULY

6th Bat detection at Landbeach (see p55)

11th–12th Alternative RA Summer Exhibition, Rampton
(see p15)

20th Family history drop-in session, Cottenham library,
7–9pm

22nd End of term

25th Waterbeach Brass Band concert and afternoon teas
at Landbeach Village Hall. Tickets available in June with
proceeds going to the hall improvement fund.

27th–31st Cottenham Summer School (see p38)

**THE
ALTERNATIVE
RA SUMMER
EXHIBITION**

Rampton Village Hall – CB24 8QA

SATURDAY 11 JULY 10am - 5pm
SUNDAY 12 JULY 10am - 4pm

**RampArts 10th Annual Exhibition
of contemporary artworks.**

Artists: A wide range of traditional and contemporary works by this lively
community art group. Over 70 art works from 25 artists.

Tutors: Work from well-known local artists – Linda Heywood,
Steve Ferris, Rosemary Millar.

Artworks, cards, prints for sale. Coffee, tea and home-made cakes. Ample parking.

Refreshments available all weekend.

FREE ENTRY! MAKE IT A DATE!

INDEPENDENT FINANCIAL ADVICE IS BEST

Free Consultation. No obligation.

That's the understanding when you talk to Nigel Bolitho about how to make your finances work to your best advantage. Get the benefit of his wide experience in all investment matters

**Pensions Savings Investments
Protection Tax Avoidance**

For sound, independent advice on all your investment plans, talk to Nigel Bolitho

**FREE CONSULTATION
NO OBLIGATION**

**BV
Services**

Mitchell House
High Street
Cottenham
Tel: (01954) 251521
Fax: (01954) 252420



London office:
Cliffords Inn
Fetter Lane
London
EC4A 1BY

Email: bolitho@enterprise.net
web: www.bvmoney.com



Authorised and regulated by the Financial Conduct Authority

AN ENTERTAINMENT FOR SPRING

Something new from the Fen Edge's best-known drama group, on the theme of marriage – which almost everyone has an opinion about! Called **MIXED DOUBLES**, the production is made up of one-act plays, each with two actors only, and monologues by different actors.

You'll see couples at various stages of their marriage, in situations created by well known authors – Alan Ayckbourn, Fay Weldon, Alun Owen and John Bowen to name a few. From their pens come insights that are funny, wry, bittersweet or poignant, and always entertaining. The monologues, from a variety of distinctive characters, were written by George Melly.

Something different, too, in that each play has a different director and the Cottenham Village College Hall will be transformed into an intimate cabaret setting, with the audience seated at tables.



With drinks and nibbles to hand, you can make it a special night out.

The performances are on April 30th, May 1st and May 2nd (Thursday, Friday and Saturday) at 7.30pm. Tickets (£9/£7) will be available from Frameworks, 171 High Street, Cottenham, or you can book online (www.cottenhamtheatre.com). If you are interested in any further information about the plays, or about CTW please contact Sue Macdonald at suemacd@btinternet.com



Cottenham Theatre Workshop

www.cottenhamtheatre.com
cottenhamtheatre@gmail.com



WILLIAM MILLER ARCHITECTS LTD

tel: 01954 251426 fax: 01954 251732

email: info@millerarchitects.co.uk

web: www.millerarchitects.co.uk

RIBA 

New Housing, Extensions & Alterations, Commercial,
Conservation & Listed, Energy Consultancy

Contact William Miller DipArch RIBA for details



Church Hall, Cottenham



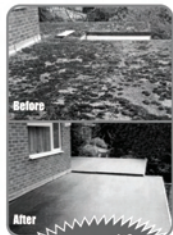
New House, South Cambs

Fed up Repairing Your Flat Roof?

Does your roof suffer from any of the following?

Leaks • Moss Growth • Cracks or Bumps

Over 10 Years Old? **Stop! Replace it now**



You can't always see what is happening to your flat roof so, Replace It Once and for All with our unique RubberBond EPDM FleeceBack Roofing System, guaranteed not to leak or crack and tough enough to stand on.

Money Back Guarantee

Proven to last over 50 years and guaranteed not to leak - or we'll give you your money back

CALL NOW for your FREE, advice, survey and no obligation quotation

01223 258049

PROJECTS 4 ROOFING

www.projects4roofing.co.uk



RUBBERBOND
EPDM FLEECEBACK
APPROVED INSTALLER



Avenue

Property Management

Quality Property Rental Service

A local, personal & professional approach to all aspects of property management & letting in your area

We provide a friendly & efficient service to Landlords & Tenants including property maintenance & repairs and comprehensive tenant referencing

25 years' property experience

We look forward to hearing from you for an informal chat

Tel: 01223 353 353 or 01354 691 560
enquiries@avenue-properties.co.uk

Your Local Company for over 39 Years

Unbeatable Value
Free Quotations No Obligation

01954 251290

Windows, Doors &
Conservatories

**Unit D, Denmark Road, Cottenham,
Cambridge, CB24 8TX**

www.polarglaze-ltd.co.uk

POLARGLAZE Ltd

DEMENTIA IN FOCUS

This year the Women's Institute celebrates its centenary, having started in 1915 to revitalise rural communities and encourage women to provide food for the war effort. Now it is helping people who are living with a life-changing illness

One of the aims of the National Federation of Women's Institutes is to make all communities more dementia friendly and promote the many small ways we can make a difference to people who gradually lose the ability to do things we take for granted, from enjoying conversations, to getting exercise, to eating or dressing without help.

Following on an initiative of the Alzheimer's Society, which has seen over a million people sign up to be Dementia Friends, the WI plan is to encourage more understanding of the disease – Alzheimer's and vascular dementia are the most common – and to support sufferers and their carers.

Who can help?

Dementia has been receiving a lot of news coverage, from the awards given to the moving film *Still Alice* about a woman diagnosed with the disease, from statistics about how many people will be affected not just in the UK but around the world, to new research that hopes to develop a skin test or eye test to identify early stages of Alzheimer's.

The difficulty for families once a diagnosis has been made is what to do about it. Useful starting points for information are charities such as www.dementiafriends.org.uk; www.alzheimers.org.uk; www.dementiauk.org

Two other services www.carerstrustcambridgeshire.org and the Village Benefits Advice Service (01353 612 926) will send people to talk to groups – both are helpful to the Willingham GP practice which organises daytime carer support through informal chats with refreshments. To find out more call 01954 260230.

The Cambridgeshire and Peterborough NHS Trust has set up the Dementia Carers Support Service which puts former carers in touch with current carers as a befriender or buddy, to share their knowledge and skills in person, by phone or email. More information from the co-ordinators:

Sally Kitchin (Mon-Wed) 07432 701833, sally.kitchin@cpft.nhs.uk; or Fe Franklin (Thurs-Fri) 07506 579367, fe.franklin@cpft.nhs.uk

Day centres

These play an invaluable role in the community providing a change of environment for those who are housebound and a break for their carers. Centres are backed by the parish councils with annual grants but are especially reliant on much-needed volunteers, to help with the meals and activities, or to drive those attending to and from the centres. If you have some spare time, do call the numbers given to find out more.

At Waterbeach there are Monday and Wednesday get-togethers with organised activities at Denson Close Community Centre, from 11am to 3.30pm, with morning coffee and afternoon tea and a home-cooked two-course hot lunch, costing a member £4 a day. For more information contact Mary on 01223 564666.

Cottenham's day centre started in 1986 and has a membership limited to 40. It operates every Tuesday from 9.30am to 2pm, providing morning and afternoon tea and coffee, lunch, bingo or cards, free book exchange and occasional outings. Members pay a small fee. More information from Mrs M Collins 01954 200873.

Willingham does not have a day centre but the one at nearby Over is a professional organisation that caters daily for 28 frail and elderly visitors. A registered charity established for 25 years, it raised funds to buy a new minibus last year, much in demand as the centre is open weekdays from 9.30am to 3.30pm and the second Saturday of the month. The daily cost is £11 which covers a hot two-course lunch, morning and afternoon tea and organised activities. Information from 01954 231807.

WIs in the Fen Edge Patch

The watchword of the WI movement is friendship and groups welcome newcomers to their meetings. Cottenham: contact Margaret on 01954 250841 or Jill on 01954 253385. Waterbeach: Sheila Lynn 01223860948. Landbeach: Jane Ward 01223 440961. Willingham: Jacky Sparks 01954261831.

Wendy Dear

L.C Electrical

Contractors Ltd

Domestic & Commercial Work

Re-wires

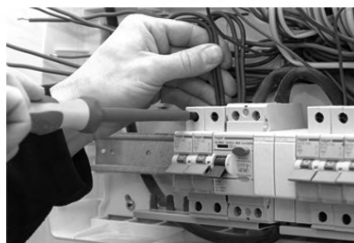
PAT Testing

Fire Alarm Servicing

Emergency Lighting

Heating Systems

24hr
call-out
service



Please call to arrange your free survey on:

Mob: 07833 133990

Tel: 01954 261501

lc.electrical@btinternet.com



28 EARITH ROAD • WILLINGHAM • CAMBS • CB24 5LS

JOIN THE FUN RUN

The annual 7K Fun Run and 1mile Junior Run will take place on Saturday 2nd May. Once again the organisers are indebted to Malary Ltd waste recycling solutions, for their ever generous support and sponsorship.

Registration for both races begins at 9: the entry fee for over 16s is £5 and under 16s £3. All proceeds, after costs, will be donated to Cottenham Primary School's music initiative (see right).

The Junior Run starts first, at 10am, around CVC playing fields, a distance of about a mile. All junior competitors must be accompanied and they each receive a medal at the finishing line.

The main race – for which age is no limit – will start at 10.45am, from CVC playing fields over a measured seven kilometres. Amazon voucher prizes first to third, for all the categories; Primary girl and boy, Village College girl and boy, Adult male and female, veteran (45+) male and female. Full details soon on Twitter @CottenhamFunRun and Facebook.

There will also be a market around the CVC pond. To book a stall contact Mike Smith (smithmichaelstanley@hotmail.com): £10 for a

commercial organisation, £5 for a charity and free for FECA member groups.

IMPRESSIVE UKULELE LADIES

Cottenham is fortunate in having an amazing number of orchestras, bands and choirs. Barbara Duckworth, who is a fine musician and music teacher, is also Chair of the primary school's Board of Governors and had the idea of creating a Ukulele Band as part of the wide range of extra curricular activities organised for the children regardless of their ability to pay for lessons.

Barbara works in tandem with another keen local music teacher Helen West, who specialises in guitar, ukulele and piano and offered her services for free for the spring term. The school's very-active PTCA bought 30 ukuleles which are rotated around the three Year 5 classes. The ongoing costs are estimated to be £650 a term.

As the PTCA is a member of the Fen Edge Community Association it can apply for a grant. As well, the ukulele project has been made the recipient of funds raised by the Fun Run. Come along on the morning and enjoy some ukulele busking!

RAMPTON MOTORS

Repairs and Servicing to All Makes of Car and Light Commercial Vehicles

Petrol & Diesel MOT Testing by appointment

Free Courtesy Car Available

Petrol, Diesel and Oil sales

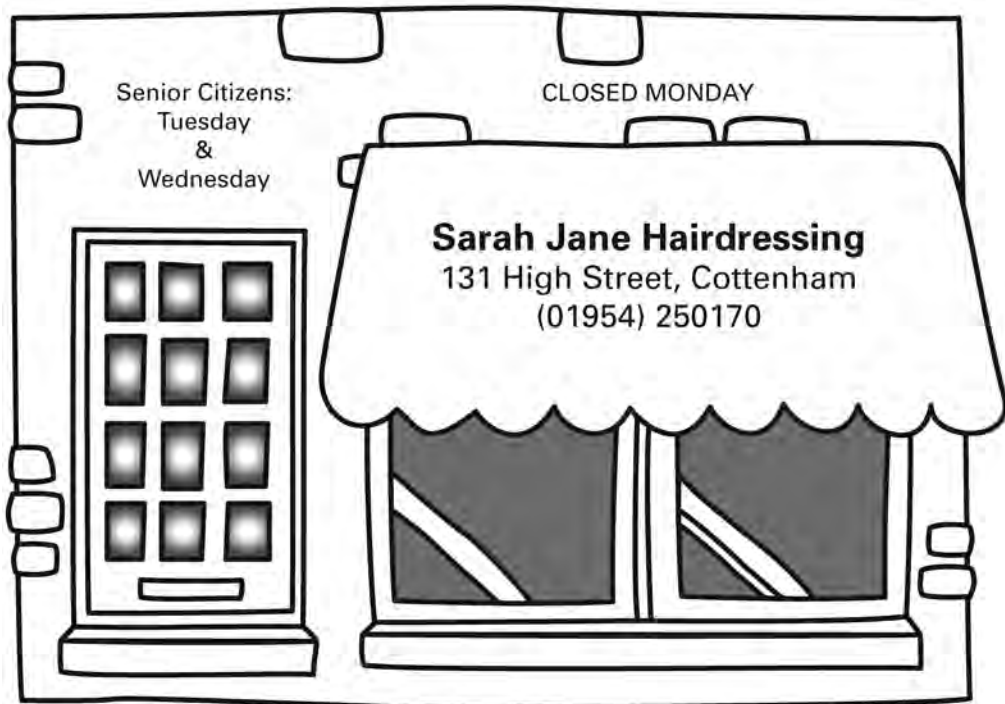
Mon to Fri 7.30am to 5.30pm

Sat 8.00am to 12.30pm

8 The Green, Rampton, Cambs CB24 8QB

Tel: 01954 250792

Fax: 01954 206046



CAMBRIDGE EXECUTIVE CARS

WWW.CAMBRIDGE-EXECUTIVE-CARS.CO.UK

IN ASSOCIATION WITH PREMIAIR TRAVEL CARS

Your personal, reliable and friendly Private Hire Executive Taxi Service!

Willingham & Cottenham based Airport, Seaport and Rail Terminal transfer specialists!

Holiday, business, leisure group and bespoke mid-to-long distance travel is our business!

For an enquiry or quote please contact or call...

bookings@cambridge-executive-cars.co.uk

Richard on 07782 130 380



RAMPTON NEWS

RAMPARTS SUMMER EXHIBITION

Rampton art group is completing its tenth year. It was set up especially for those people who said "But I can't draw" and did not have the confidence to attend one of the local community art classes. So pencils were banned and with no focus on drawing, everyone relaxed and explored colour, light and shade and all the other aspects of both abstract and representational painting. Their drawing has improved too!

Do come to the exhibition, on the weekend of July 11/12 (10am to 5pm, Saturday; 10am-4pm Sunday), and see what they produced. My fellow tutors Linda Heywood and Steve Ferris and I will have works on display as well.

Or when you're in Cottenham call in at Lewis House, the GPs surgery on the High Street. Ramparts were asked by the patient support group if we would like to brighten the walls with our paintings – part of their refurbishment. The group takes a small percentage of work sold.

Ramparts members regularly go by coach to visit exhibitions – Matisse and Henry Moore were favourites. If you would like to join us come to the exhibition and let us know.



**RAMPTON VILLAGE
HALL**

For your
**BIRTHDAY PARTY
WEDDING RECEPTION
ANNIVERSARY CELEBRATION**

Splendid modern hall with kitchen.
Bar facilities subject to licence.
Also available for social bookings and clubs.

For rates and further details see our
website: www.ramptonvillagehall.co.uk
or ring: 01954 252214

Children's parties at special rates.



Registered Charity No. 802398

The arts are facing a critical time. The Warwick Commission Report, published in February, states that creativity is draining away from schools and access to the arts is too restrictive. Ramparts is at capacity but if you would like to set up your own art group chat to us at the exhibition. Bring children along too – if they are losing out from the systematic removal of arts from state schools this is a way of introducing them to creativity. We could all benefit, too, from the BBC's new campaign to get the population doing something creative. *Rosemary Millar*

RELAY AND FUN RUN

This annual event takes place on April 26. It is run over a course of exactly one Rampton mile and can be tackled by individual runners or teams of four running a four-lap relay. There will be stalls at the village hall as well – check the newsletter (see below) for details.

FOR YOUR CALENDAR:

The 28th annual Rampton Horse Show held in the Parkland (by kind permission of CCC county farms estate) on September 12. Popular family event, the proceeds from which benefit many charities. To register go to www.ramptonhorshow.org or on Facebook [ramptonhorshow](https://www.facebook.com/ramptonhorshow).

GOOD OIL SHARE

Despite the reduction in fuel oil prices, the village bulk purchase scheme continues to save residents a significant sum against 'go it alone' buying. If you want to join contact johnfbates@gmail.com or leave a message on 01954 208045.

DIRECTORY

Church contact

Judith Middleton..... 01954 251 607

Rampton church

Rev Kylie Hodgins 01954 250454

Newsletter

Karen Williams kazza.will@yahoo.co.uk
www.rampton.org for the Rampton newsletter

Parish council:

see page 19.



Mickey Bendelack



CAMBSWATERBEACH.COM DRIVING TUITION

Friendly expert tuition with a DSA approved instructor

Beginner, advanced, pass plus and intensive

Foreign licence holders welcome

cambswaterbeach@hotmail.co.uk

Tel: 01223 440431

Mob: 07779 823680

CAMBRIDGE'S HIGHEST PASS RATE



Willingham Post Office

15 High Street, Willingham CB24 5ES

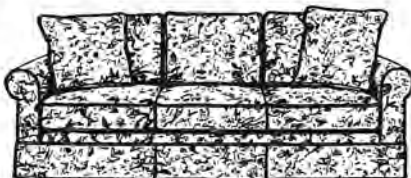
☎ 01954 260331

Mon–Fri 08.30–18.00 Sat 08.30–17.30

- All mail services, including special delivery
- Travel Currency, Travel Money Cards and Travel Insurance
- Moneygram
- Post Office Gift Cards for most occasions
- Passport Photographs
- Passport Check and Send Service
- Vehicle Tax
- Financial Products – Insurance, ISA, Growth Bonds, Credit Cards and much more
- Broad Band and Phone Packages, Phone Top-Ups
- Bill payments
- Free Cash withdrawals for most major Banks as well as Cash & Cheque Deposits
- Photocopying and Laminating Service
- Great range of Greeting Cards, Stationery and Pack & Post Items

ADRIAN J. READ upholstery

Antique and modern furniture,
loose covers, sundries.
Free estimates, home choose fabrics.



Unit 1, Convent Drive, Denny End

Industrial Estate, Waterbeach

Cambridge CB5 9QT

Telephone: 01223 860800

IN YOUR GARDEN: MAKING IT LUSH

Ken Ellis looks at ways to ensure lushness and colour in the summer months

When you read this, gardens will have begun the rush into summer. But I'm writing in early February, with the ground still frozen and a chill wind in the air. It's made me look closely at the herbaceous border that once was eye-catchingly bright, but the plants have become a bit long in the tooth and need a boost.

If we are what we eat, plants are what they grow in. The business of what to put in the ground can be a bit of a dark art so we'll keep it simple. We use farmyard manure and soil improver which have nutrients that keep plants healthy and material to bulk up the soil. Get these from garden outlets, or go to the Recycling Centre on the A10 where you can bag up as much soil improver as you want for free. Take strong bags and a friend to hold them open. Bin liners will burst! You can also dig in leaf mould and compost to give the soil a nice friable structure, encourage worms and insects and hold moisture.

When working on an established border be careful not to damage sleeping bulbs and plants. Use a small border fork and carefully lift and divide any large plants. Scatter a generous layer of improver and manure amongst the existing plants and lightly fork it in. Worms will do the rest. These excellent little helpers will pull what they think they can eat down through the soil, mixing it very effectively.

If starting a new border, dig over the soil to loosen it and mix the components well. Your aim is to produce a loam soil that has good drainage yet retains water. Generally, if your soil is dusty and lifeless, add material to hold it together. If it's wet and dank, add material to help it drain.

All plants need added nutrients and most benefit from the multi-purpose fertilisers. But some appreciate specific ones. My staple cure-all is blood,

bone and fish, which most shrubs and perennials appreciate. It's a slow release fertiliser, adding goodness over a period of time rather than giving the plants a sort of horticultural sugar rush. I also recommend using a mycorrhizal fungus product for strong root growth, particularly in shrubs.

Once the ground is ready, take into account your garden's micro climate: which way the area faces and if it is shaded by trees or large bushes. Consider the effect you want to achieve: a mix of different plant heights, for instance, or a particular colour scheme or plants that will provide colour over a long period. Here are some things that might help:

- When planting a long border, if you start with bright colours and plant pastels further away, you create the illusion of length. If you do it the other way round, you bring the garden towards you.
- Bright red is to be used carefully. It draws the eye.
- Blue is the last colour to disappear at night, and is good for evening gardens.

Cottenham Gardening Club meets on the last Friday of every month (mostly) at 7.30pm in the Community Room in Franklin Gardens. Details from Colin Ward on 01954 252190

Gardens to view: may be open in Cottenham during Fen Edge Family Festival; In Ely: gardens are open on 7 June from 2–6pm, a combined ticket is £5 per adult, children free. Money goes to Macmillan, Marie Curie and other charities. Details of the open gardens: www.ngs.org.uk – click on Ely Gardens 1, then on 12 and 26 Chapel Street to see the Ellis efforts.

- So is white. The flowers are scented to attract insects.
- A few well chosen bigger or specimen plants look better than a bargain buy of smaller unhappy looking plants.
- When buying plants, try to include some insect friendly ones. They're usually marked as such, and you'll be keeping the real garden workers going.
- For flower succession, go to the garden centre monthly and choose from what's blooming. If you want to be more scientific, there are planting guides available.

I'll put some suggestions on our website too: www.simplygardeningofely.co.uk

- Woodland and shade-loving plants flower earlier than their showy-offy cousins that like the light.
- Large leaved plants sold for their foliage are more likely to suit more shady environments.
- When planting groups, don't plant too close together. Fill the gaps with scatterings of hardy annual seeds to ensure colour as the months pass.

Cottenham Computers

01954 593025

Call the experts for good honest advice

We will come to your home or business to fix your computer

Got any of these issues?

- ✓ Computer crashing
- ✓ Network Wi-Fi connection Issues
- ✓ Computer infected with viruses
- ✓ Windows won't boot
- ✓ Can't access your email
- ✓ Can't access the Internet
- ✓ Computer running very slow


Services

- ✓ PC & Laptop Repairs & Upgrades
- ✓ Macbook & iMac Repairs & Upgrades
- ✓ Broadband / Wi-Fi Installations
- ✓ Full Hardware Diagnosis
- ✓ Hard Drive Data Recovery
- ✓ Supply New PCs & Laptops
- ✓ 3 Years Hardware Warranty on New PCs

Working all day? Then we can collect and deliver FREE to and from your work place*

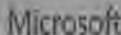
* Within 10Miles of Cottenham

We cover Cottenham & surrounding towns & villages

Authorised UK
Partner 

For all computer related problems give us a ring!

www.cottenhamcomputers.co.uk



Furniture Restoration

Rob Ellis

*(French) polishing and repair
of antique (and not so antique)
furniture by a local restorer*

Telephone: 01954 250153
Mobile 07950 051577

Universal Fencing Co Ltd

Established
30 Years

Tel: 01954 231335
Fax: 01954 231202

www.universalfencing.co.uk

SUPPLY ONLY OR SUPPLY AND ERECT
FREE ESTIMATE



Palisade



Featheredge



Field Gates



Security Fencing

Unit 11 Norman Way Ind Est, Over, Cambridge, CB24 5QE

Open: MON-FRI 7.30am - 5pm

SAT 7.30am - 12am

**Commercial, agricultural, industrial & domestic
Fencing contractors**

FEN EDGE PARISH COUNCILS

COTTENHAM PARISH COUNCIL

The precept for 2015/16 (allocation via council tax) is £204,098, down by £33,543. Projects include provision of disabled toilets at the Village Hall; £40,000 towards highways projects such as traffic calming into/out of the village and improving mobility routes to the High Street from sheltered housing areas (Franklin Gardens/Stevens Close/Coolidge Gardens); outdoor exercise equipment; new disabled/pushchair friendly pathway on recreation ground that could double up as a bike learning trail (requested by residents as part of the Vision Plan). The youth provision budget has been increased to fund the Connections Bus (youth club) for a year, and working with a youth worker to provide first aid/babysitting courses for younger residents.

Council meets first Tuesday of month in village hall (recreation ground), Lambs Lane, at 7.15pm. Clerk: Jo Brook. Office: 250A High Street (to right of Community Centre). Open Monday 9.45am to 12 noon or by appointment. Contact details: 07503328401, clerk@cottenhampc.org.uk and www.cottenhampc.org.uk

RAMPTON PARISH COUNCIL

The precept for 2015/16 is £13,000 to cover the normal maintenance of the village, supporting village activities, ways to reduce speeding, possible improvements to the village drainage to avoid flooding, extension of the church path to pave the approach to the burial ground. Council meets first Monday of month (not August), in village hall, 7.30pm. Clerk: John Garstang. Office (by appointment): 23 Cow Lane. Contact details: 01954 250960; ramptonparishclerk@gmail.com and www.rampton.org

LANDBEACH PARISH COUNCIL

The precept for 2015/16 is £20,000 and will be used for a defibrillator, a village notice board, tree felling and village maintenance.

Council meets first Monday in month (not August), in village hall, 7.30pm (on bank holiday months, meetings are second Tuesday in the parish church). Clerk: Maria Sylvester. Office (by appointment 9am-1pm, 2-5.30pm): 30 Lee Close, Cottenham. Contact details: 01954 252400; mariasyvester@hotmail.co.uk and www.landbeach.org.uk

WATERBEACH PARISH COUNCIL

The precept for 2015/16 is £148,880. Council meets first Tuesday of month at The Old Pavilion, 7.30pm. Clerk: Liz Jones. Office: Tues and Thurs 10am-2pm (or by appointment), The Old Pavilion, Cambridge Rd. Contact details: 01223 441338; council@waterbeach.org.uk and www.waterbeach.org.uk

WILLINGHAM PARISH COUNCIL

The precept for 2015/16 is £114,000 and will be used for the running of the council and its various areas of responsibility. The major project will be provision of new play equipment, achieved by using council S106 monies and grant from funding bodies.

Council meets first Wednesday of month at the Octagon, 7.30pm. Clerk: Mrs Mandy Powell. Office (by appointment 10am-1pm): Ploughman Hall, West Fen Rd. Contact details: 01954 261027; email@willinghampc.org.uk and www.willingham-pc.org.uk



ESTABLISHED 2003

If you're fancying a Pamper, why not come along to the longest Established Beauty Salon in the area?

Offering an extensive list of Treatments with the most experienced therapists around.

Book in today for that well deserved treat!

Call 01954 280080

Visit www.classicbeauty-cottenham.co.uk for all the latest monthly offers

195 High Street, Cottenham CB24 8RX

 Like  Us on facebook

GUITAR/UKULELE & PIANO LESSONS



Learn how to play any of these instruments in just a few easy lessons.

ALL STYLES CATERED FOR

(From Bach to Boogie, Country to Classical/Rock/Pop & Blues)

EXPERIENCED TEACHER

(Member of the Registry of Guitar Tutors)

Contact Helen on:

07798 526084

or visit www.guitarlessons-cambridge.co.uk

CAMBRIDGE WATER & GARDEN FEATURE SERVICES

We sell/install/clean/repair all water features.

Large selection of quality water features/garden furniture/ planters/patio heaters and lots more for sale all at 40% below garden centre prices.

OAP Discounts

See our Web site for more information
or call 0792 6521135

www.cambridgewaterandgardenservices.co.uk



B R Unwin Brickwork & Building Contractors Ltd.



Specialists in extensions, renovations and conversions

Phone: 01954 201 556 Mobile: 07759 621 390

bruce@brunwinbrickwork.com www.brunwinbrickwork.com



KNOW YOUR COUNCILS

If you have a gripe or a local problem or need advice it is good to know which council you should take it up with.

Cambridgeshire County Council (see business plan: www.cambridgeshire.gov.uk). Future: agreed in principle to work towards a City Deal for Greater Cambridge. Present: a concern is school funding as Cambridgeshire receives less money per pupil than any other part of the country.

Responsibilities: Births, marriages and deaths; Education; Environmental matters and planning; Footpath repairs and maintenance (including grass verges); Housing; Leisure and culture; Road repairs and maintenance; Social and health care services; Street lighting; Transport.

CCC Councillors Cottenham and Rampton: Mike Mason (mjmason@virginmedia.com); David Jenkins (ccc@davidjenkins.org.uk); Waterbeach and Landbeach: Maurice Leeke (maurice16@ntlworld.com); Willingham: Peter Hudson (peter.hudson@cambridgeshire.gov.uk)

South Cambridgeshire District Council
(www.scambs.gov.uk).

Responsibilities: Benefits; Bus passes; Council tax collection; Health and social care; Local planning and housing services; Environmental Health Planning; Waste collections and recycling

SCDC Councillors Cottenham and Rampton: Simon Edwards (01223 233682); Lynda Harford (07889 131022); Tim Wotherspoon (01954 252108)*. Or contact via www.cottenham.districtcouncillors.co.uk
Willingham: Brian Burling (01954 230168)*; Pippa Corney (01954 231221); Ray Manning (01954 261235)
Waterbeach and Landbeach: James Hockney (01223 441289); Peter Johnson (01223 560918)

**up for re-election 7th May*

TWO COUNCIL ROLES

Lynda Harford, district councillor for Cottenham and Rampton, in February was elected a county councillor for the Bar Hill, Boxworth, Dry Drayton, Girton and Lolworth ward, receiving the highest number of votes (787) in a five-way contest. Turnout was 26%.

INDEPENDENT LIVING FUND

This Government fund which aimed to support long term independent living for severely disabled people by helping them to live at home instead of in residential care will end on 30 June 2015 and the County Council will take over responsibility for meeting the needs of those receiving ILF support.

From April, under the Care Act, councils become responsible for care and support services available in their area, working with other organisations (such as charities) to ensure the right services are in place to meet people's needs. If someone needs care, he or she must be involved in the assessment; if this would be too difficult and there is no one to speak on his or her behalf, the council must find an independent advocate. Factsheets about the Care Act 2014 from www.gov.uk/government/publications

www.fixmystreet.co.uk - for roads that need to be repaired

NOTE District and county councils must notify parish councils of: all planning applications; proposals to carry out sewerage works; footpath and bridleway (rights of way) surveys; intention of providing a burial ground in their area.



ENTIRE
GROUP



The Complete Gas Heating and Plumbing Company

**Plumbing • Heating • Gas • Bathrooms
Water Softeners • Property Maintenance**

Tel: 01954 204044 • Web: www.entiregroup.co.uk
Email: service@entiregroup.co.uk

Spray Tanning Cambridge



Getting married...



Girls night in...



A winter glow...

I am a fully trained, qualified and insured mobile spray tanning therapist and can visit you in the comfort and convenience of your own home. Spray tanning gives a natural healthy looking tan without the risks associated with exposure to the sun.

"Simone provides an excellent friendly, whilst professional, service. Superb value for money while making you look and feel great. Definitely having more!" Sarah

Mobile Spray Tanning

Simone Edwards
Cottenham ● Cambridge
07791 202852
simoneedwards77@live.co.uk

"Thanks for fab tan last week Simone. One week on and it's still looking good!" Katie

Murray Heating Services

Commercial & Domestic



- ❖ **Boiler Servicing from £55.00**
- ❖ Natural Gas & LPG Servicing
- ❖ Gas Appliance & Heating System Fault Diagnosis & Repairs
- ❖ Boiler & Heating System Upgrades
- ❖ Compliance Checks & Landlords Certificates
- ❖ Catering & Laundry Equipment Maintenance
- ❖ Unvented Hot Water Cylinder Maintenance
- ❖ Plumbing Repairs
- ❖ *Out of Hours & Weekend Appointments*
- ❖ Increase heating performance & efficiency with a **MagnaCleanse System**
Desludge & Descale from **£350.00**
Including the fitment of **MagnaClean Filter** for ongoing protection

Contact us for a quote today...

Tel: 01954 715 814 / 07948 548 492
email: murrayheatserv@icloud.com

FEN EDGE MISCELLANY

WATCH FOR THE NEW SIGN

The Cottenham village sign on the corner of Lambs Lane and the High Street looks bereft without its illustration but it will soon be back. The painting was removed and professionally photographed so that it could be digitally retouched and printed onto vinyl board which will be moisture resistant. The woodwork will be restored and repaired, the whole refurbishment funded by money received from WISER following the village WEEE recycling event in January. WISER gave the Parish Council money for every tonne collected to be used for a community project, says Jo Brook, clerk.

THE YESTERYEAR ROAD RUN

Organisers Vivien and Alan Lampard hope to build on last year's success and make this event on April 19 even more interesting as well as raising as much as possible for the fight against cancer. Over 300 vehicles took part in 2014 – cars, motorcycles, tractors and other commercial varieties. And what a sight it was on Cottenham Village Green when they all arrived back after their run through Rampton, Willingham, Over, Swavesy, Longstanton, Oakington and Histon. Young and old wandered between the gathered collection, fascinated by the variety, the long history of motoring they represented.

The route's the same this year but the participants will start arriving at Cottenham from 7.45am – that's when the road to the right of the Green will be closed – and there will be a staggered start, to about 10.30am, to avert congestion at Rampton and Willingham. The cavacade will be stopping for lunch at Swavesy, at the White Horse. The road will be closed at Histon Green from 3 to 3.30pm as the Run makes its way back to Cottenham, arriving about 4pm.

Volunteers will manage the traffic, make the tea, run the tombola as well as collect funds for Cancer Research UK. To volunteer or find out more contact vivien.lampard@ntlworld.com or call 01954 200811.

ACTION ON SPEEDING

New Speedwatch signs are now in place on Rampton Road, Cottenham, following months of monitoring of traffic. Two vehicles were recorded by volunteers as travelling at 45 mph or above in this residential area,

says Kate Heydon, Cottenham Speedwatch coordinator. On that part of Beach Road which is a 30mph zone, two vehicles were travelling at 37mph.

With Pelham Grange the new housing development on Long Drove almost complete, the 30mph sign on Landbeach Road will be moved towards Landbeach with a 40mph buffer zone just after Dataracks just after you come into the village. This will slow down traffic gradually. The work is being paid for by the S106 money from the developers of Pelham Grange which comprises 47 new houses, 19 of them affordable. The houses, built to a high energy efficiency, are being sold through David Williams Homes and Flagship.

BRING HISTORY TO LIFE

People who love history and enjoy talking to people should investigate volunteering opportunities at the Farmland Museum (on the A10).

ABBEY STEWARDS – are wanted for weekends (April to September) to look after Denny Abbey, an amazing building dating from the 12th century.

LIVING HISTORY VOLUNTEERS – Bring Denny alive by becoming a nun, a farmer, shop keeper, a monk and many other characters!

For more information visit www.farmlandmuseum.org.uk or contact Ann Wise, Museum Manager by emailing info@farmlandmuseum.org.uk

FEN EDGE FOOTPATH GROUP

Anyone wanting to join this enthusiastic group or take part in planned walks can check the www.fenedge.co.uk website and follow the link to the FEFG's website. On April 25, there'll be a 9/10 mile walk around Dry Drayton and other villages; on June 13 the walk is 10/12 miles around Godmanchester and Houghton. A weekend of walking in the Peak District is also on the agenda, May 8 to 10.

FEFG is involved in the Cottenham Summer School in July, offering 8/11 mile walks that explore villages around the county, between 9.30am and 4pm on weekdays. Information from <http://community.cvcweb.net> or call 01954 288751.

As walking is now considered the best everyday exercise for all ages, joining a group like this gives you company and encouragement as well.

NATURAL MATERIALS. THE NATURAL CHOICE.

Stonemasonry expertise at Ivett & Reed is second to none – whether it is restoring, replacing or creating new stonework for windows, steps, copings or sills.

We hold stocks of Portland, Bath, York and Ancaster Hard White stones or we can work to your individual specification. We have an extensive stoneyard, workshops equipped with state-of-the-art machinery, a designated memorial showroom and spacious and stylish areas featuring our fireplaces, fires, stoves, worktops and tiles.

Call us on 01223 213500 for a quote
or visit our stoneyard and showroom Monday – Saturday



www.ivettandreed.co.uk

IVETT & REED
QUALITY SET IN STONE



615 NEWMARKET ROAD, CAMBRIDGE CB5 8PA

Cambs Lock & Safe Ltd
Master Locksmiths & Engineers

93 King Street Cambridge CB1 1LD
Tel: 01223 353077 Fax: 01223 301620

website: www.cambslockandsafe.co.uk

**Your Genuine Local Master Locksmith established for
over 21 years with a shop in the centre of Cambridge**



- Locks fitted to BS3621 & DDA Requirements
- Full Key Cutting Service
- Security Grilles, Bars, Gates
- 24 Hour Emergency Service
- UPVC Door & Window Locks & Fittings
- Safes & Fire Cabinets Supplied, Installed & Serviced
- Door Access Control, Fire / Emergency Exit Locks
- FREE Estimates & Security Advice

MEMBER MASTER LOCKSMITHS
ASSOCIATION



For a Fast, Friendly, Reliable and Professional Service contact the Experts

Telephone: 01223 353077
Email: info@cambslockandsafe.co.uk

ADULT LEARNING & LEISURE

COTTENHAM VILLAGE COLLEGE

HIGH STREET, COTTENHAM, CAMBRIDGE, CB24 8UA

TEL: 01954 288751

Email: community@cvcweb.net

Web link: <http://community.cvcweb.net>

ADULT LEARNING OFFICE

01954 288751

SCHOOL RECEPTION

01954 288944

SCHOOL RECEPTION FAX

01954 288949

SPORTS CENTRE

01954 288760

COTTENHAM PRIMARY SCHOOL

01954 206227

WATERBEACH PRIMARY SCHOOL

01223 718988

WILLINGHAM PRIMARY SCHOOL

01954 283030

Village College Headteacher:

Steve Ellison

Adult & Family Learning Manager:

Janet Drinkwater

Adult Learning Administration:

Cottenham Village College

Tracy Thistlethwaite

Debbie Jackman

Kate Taylor

ENROL NOW FOR SUMMER 2015 COURSES

Tel: 01954 288751 Email: community@cvcweb.net

Direct Link: <http://community.cvcweb.net>

 Adult Learning at Cottenham Village College

Booking Form – See Page 40

**Summer School 2015 brochure available
please contact us if you would like to receive a copy
01954 288751 Email: community@cvcweb.net**



**Cottenham
Village College**



**Cambridgeshire
County Council**

**Skills
Funding
Agency**

COURSES AT A GLANCE

Arts & Craft

Ceramics – Wednesday
Dressmaking – Monday
Dressmaking for Beginners – Monday
Free Machine Embroidery – Wednesday
Patchwork & Quilting – Wednesday
Silversmithing – Tuesday & Wednesday
Upholstery – Thursday & Friday
Watercolour Painting – Monday

Fitness & Health

Fitness for Mature Movers
Waterbeach – Monday
Fitness for Mature Movers
Cottenham – Wednesday
Pilates – Monday & Tuesday
Ruth's Latin Dance Fitness – Wednesday
T'ai Chi – Tuesday
Yoga – Monday & Tuesday

Dance & Music

Adult Ballet Beginners – Monday
Adult Tap Dancing Beginners – Monday
Adult Tap Dancing Intermed/Improvers –
Wednesday

Adult Ballet – Wednesday and Thursday at
Cottenham Community Centre
Ballroom Dancing – Monday
Evocative Flamenco Guitar – Monday

Languages

French Conversation – Thursday
Improve Your French Year 1 –
Wednesday
Revive Your Spanish – Tuesday
JUST TALK ENGLISH – Wednesday

Computing & Photography

Microsoft Word – Saturday
Microsoft Excel – Saturday
MORE Getting to Know Your iPad –
Saturday

General

Art History – Monday
Carpentry Design & Make – Wednesday
Pamper Yourself Beauty Workshops –
Monday

JUST TALK ENGLISH FREE COURSE FOR PARENTS/CARERS



English classes for speakers of other languages
8 Wednesday evenings
Starts 6th May 2015
7pm–9pm

This course is for parents/carers who would like to improve their communication in English in a relaxed and friendly group. Contact us to book a place
Tel: 01954 288751 or Email: community@cvcweb.net

ADULT CLASSES AT THE VILLAGE COLLEGE

The prices quoted are for Adults (F) = Full Rate and

(R) = Reduced Rate for those on a means tested Benefit or Pension Credit

PLEASE NOTE: ALL FEES MUST BE PAID BEFORE THE START OF THE COURSE.

Payment can be made by cash, cheque, debit or credit card

(please note that for credit card payments there is charge of £2.50)

DATES FOR SUMMER 2015

Monday 20th April.....Classes start

Half-Term Break 25-29 May.....No classes

NOTE: Please check the dates of your class, as some may run outside of the above dates – no classes on Bank Holidays

MONDAY

Adult Ballet for Beginners – 10 weeks 7.30-8.30pm Fee: £50(F)/£40(R) – starts 20th April (held in our Dance Studio)

For those who attended ballet classes as children or complete beginners. This class is designed to teach style, co-ordination, terminology and the steps that are the building blocks for ballet. A great dance class for having fun while developing tone and strength throughout the body.

Adult Tap Dancing for Beginners – 10 weeks 6.30-7.30pm Fee : £50(F)/£40(R) starts 20th April (held in our Dance Studio)

For complete beginners, this class is designed to teach rhythm, co-ordination, terminology and the steps that are the building blocks for all tap dancing. This is a great dance class for having fun while developing tone and strength in the legs and hips.

Art History: The Golden Age of European Painting 1820-1920 – 8 weeks 7.00-9.00pm Fee: £72(F)/£54(R) starts 20th April

This course is aimed at anyone who would like to know more about European painting 1820–1920. It will be a basic introduction to selected art movements during this period including the Romantics, Secessionism and Post-Impressionism. Artists and their work will be studied each week

so that students can gain an insight into how the periods linked together, and why they were seen to be so important during this era.

Ballroom Dancing Intermediate – 5 weeks 7.15-8.15pm Fee: £25(F)/£20(R) starts 20th April

This course is for those who have already attended a Beginners' class for a year or have at least 20-30 hours of previous lessons and want to improve their skills and increase their knowledge of dance routines.

Ballroom Dancing Advanced – 5 weeks 8.15-9.15pm Fee: £25(F)/£20(R) starts 20th April

This course is for those who have already attended an Intermediate class for a year or have at least 60 hours of previous lessons. Learn more complex steps and routines to further enhance your dance experience.

Dressmaking (Daytime) – 10 weeks 12.30-2.30pm Fee: £90(F)/£68(R) starts 20th April

Learners will be guided through the purchase of fabrics and patterns. They will learn how to make basic pattern alterations, cut out, assemble and fit their garments. As well as this they will be taught basic dressmaking techniques and make samples to

practice their skills. There will be plenty of help with using a sewing machine if required. Suitable for beginners and more advanced learners.

Dressmaking for Beginners – 5 weeks 7.00-9.00pm Fee: £45(F)/£34(R) starts 20th April

Would you like to be able to make your own clothes or clothes for your children? Then come and learn how to use your sewing machine, follow a pattern and cut out fabric. Then using modern sewing techniques make clothes that not only fit but you will be proud of. This course is designed for those with no sewing experience or those who want to return to sewing clothes and make them to fit. Materials extra.

A 5 week improvers course will follow starting Monday 8th June 7.00-9.00pm, contact us for more details.

Entry Pilates (Daytime) – 10 weeks 1.45pm–2.45pm Fee: £50 – Classes held at RAMPTON VILLAGE HALL starts 20th April

Using the system developed by Pilates, learners can expect to learn better techniques to move and increase body awareness using the easier options

of the exercises. This makes this session suitable for those new to Pilates, recovering from an injury and those who are not interested in taking the movements to the next level of complexity.

Evocative Flamenco (introduction to Flamenco Guitar) – 5 weeks 7.00pm-9.00pm Fee: £45(F)/£34(R) starts 1st June

Let your fingers do the walking... Do you have basic guitar skills? Ever been keen to learn Flamenco? Well it's easier than you think – why not come along to this introductory course and learn the basics. After 5 weeks you should have an understanding of at least one Compas (rhythm) and possibly more.

Fitness for Mature Movers (Daytime) – 5 weeks 10.00-11.00am Fee: £20 starts 20th April (Tillage Hall WATERBEACH, parking available). Join us to gently stretch and tone in a friendly class. All movements to your own ability and will improve your balance and agility. All welcome – you really are never too old to start toning those muscles!

Pamper yourself with Beauty NEW Workshops

Learn some tricks of the trade from an experienced, qualified Beauty Therapist. These short courses will leave you feeling pampered from head to toe as you learn how to replicate salon treatments at home including manicure, pedicure, facials and make-up.

Manicure with confidence	1 evening 7.00-9.00pm	Fee: £9	8th June
Pedicure with confidence	1 evening 7.00-9.00pm	Fee: £9	15th June
How to treat your skin with a Facial.....	1 evening 7.00-9.00pm	Fee: £9	22nd June
How to Apply your own Make up.....	1 evening 7.00-9.00pm	Fee: £9	29th June

Watercolour Painting (Daytime) – 5 weeks 10.00am -12noon Fee: £45(F)/34(R) starts 18th May (then 1st, 8th, 15th & 22nd June)

For beginners and for those with more experience. Watercolour is the most popular medium, and for very good reason. There will be a definite bias towards traditional landscape painting. You will be encouraged to create paintings from your own observations applying the 'rules' of design and composition. Learners need to supply their own materials – full list provided at first class.

Yoga For Beginners – 10 weeks 6.30-8.00pm Fee: £68 (F)/£51(R) starts 20th April

A beginners course which is suitable for all ages and abilities. Learners with some experience who want to 'go back to basics' are also welcome. The course aims to increase your flexibility whilst teaching you how to work with your breath and how to relax. Please note this course is not suitable for ladies in the first three months of pregnancy.

TUESDAY

WEA (Cottenham) Location: British Legion Hall, High Street, Cottenham

Subject:	"Film and Film Music"	Tutor:	Laurence Staig
Start date:	14th April 2015	Time:	10am (6 sessions of 2hours 15mins)
Course fee:	£44.80	Contact:	Liz Milway Tel: 01954 250039

A course which explores the role of music in film, with reference to key composers such as Ennio Morricone, Bernard Herrmann and John Barry. This is an appreciation course but will be anchored in the study of film and technique.

**Intermediate Silversmithing – 10 weeks
7.00-9.00pm Fee: £90(F)/£68(R) (plus £20
for materials – copper not silver) starts 21st
April**

This is a course aimed at learners with previous knowledge of Silversmithing who are looking to explore more advanced techniques used to make cutlery, bangles and curtain ends etc. We will predominantly work in copper which has similar properties to silver at a fraction of the cost. Full details available when booking your place.

**Entry Pilates – 10 weeks 6.30-7.30pm
Fee: £50(F)/£38(R) starts 21st April**

Using the system developed by Pilates, learners can expect to learn better techniques to move and increase body awareness using the easier options of the exercises. This makes this session suitable for those new to Pilates, recovering from an injury and those who are not interested in taking the movements to the next level of complexity.

Pilates Explore (Improvers) – 10 weeks 7.30-8.30pm Fee: £50(F)/£38(R) starts 21st April

Using the system developed by Pilates, learners can expect to learn better techniques to move and increase body awareness. These sessions also incorporate the more challenging options of the exercise for those interested in taking the movements to the next level of complexity.

**Revive Your Spanish – 10 weeks 7.00-9.00pm
Fee: £85(F)/£64(R) starts 21st April**

This course is aimed at those with a little previous knowledge of basic Spanish phrases and it is designed to give you confidence to speak the language and be understood. If you already have a smattering of words and phrases and want to take it further to gradually increase your knowledge of Spanish then this is the course for you.

T'ai Chi for Beginners – 10 weeks 7.00-8.00pm Fee: £45(F)/£34(R) starts 21st April

T'ai Chi Chuan is a meditative form of exercise involving flowing sequences of movement. Regular practice can help to develop calmness and relaxation, physical fitness, mental clarity and a sense of well-being.

T'ai Chi for Improvers – 10 weeks 8.00-9.00pm Fee: £45(F)/£34(R) starts 21st April
Suitable for those with at least one year's experience.

**Yoga for Improvers – 10 weeks 7.30-9.00pm
Fee: £68(F)/£51(R) starts 21st April**

Suitable for those with at least one year's experience (gained over the last few years). The course aims to increase your flexibility improve your asana practice and develop your understanding of the philosophy of yoga. Please note this course is not suitable for ladies in the first three months of pregnancy.

WEDNESDAY

Adult Ballet (Daytime) – 10 weeks 10.00am–11.00am Fee: £50 – starts 22nd April – classes at Cottenham Community Centre

For those who attended ballet classes as children or complete beginners, this class is designed to teach style, co-ordination, terminology and the steps that are the building blocks for ballet. A great dance class for having fun while developing tone and strength throughout the body.

Adult Tap Dancing Improvers – 10 weeks 7.00-8.00pm Fee: £50 – starts 22nd April – classes held in the Dance Studio

For those who have previously completed Adult Beginners Tap (Levels 1-3), or who have previous experience of Tap to Grade 3. This class is designed to teach rhythm, co-ordination and to refine technique. Bring a little Fred Astaire to your Wednesday evenings!

Adult Tap Dancing Intermediate – 10 weeks 8.00-9.00pm Fee: £50 – starts 22nd April – classes held in the Dance Studio

For those who have previously completed Adult Improvers Tap (Levels 1-3), or who have previous experience of Tap to Grade 6. This class is designed to develop higher levels of rhythm, co-ordination and technique. Bring a little Ginger Rogers to your Wednesday evenings!

Basic Silversmithing – 10 weeks 7.00-9.00pm Fee: £90(F)/£68(R) (plus £20 for materials – copper not silver) starts 22nd April

Suitable for beginners or people with some previous experience with the material. Students will work in copper initially, which has similar properties to silver at a fraction of the cost, and be taught how to solder, pierce, form and finish metal. Full details when booking your place.

Carpentry, Learn Design & Make – 10 weeks 7.00-9.00pm Fee: £90(F)/£68(R) (materials costs are extra) starts 22nd April

This course will be a light, informative, enjoyable, progression from idea to conclusion. We offer a top quality, extensively equipped carpentry workshop where you can design and make a woodwork project of your choice. Suitable for the complete beginner or the expert.

Ceramics – 10 weeks 7.00-9.00pm Fee: £95 + £15 materials starts 22nd April

You will learn how to pinch, coil, press-mould, slab-build, throw and decorate clay to make beautiful and useful items – tea light holders and tiles, jugs, bowls & garden sculpture. We use smooth and coarse stoneware clays and there are four electric wheels in the pottery room. Suitable for beginners and the more experienced.

Just Talk English (for speakers of other languages) FREE COURSE FOR PARENTS AND CARERS – 8 weeks 7.00-9.00pm starts 6th May

This course is for parents or carers who would like to improve their communication in English in a relaxed and friendly group setting. Meet others, make friends and practice your English in a supportive environment with the help of an experienced Tutor.

Free Machine Embroidery for Beginners (Daytime) – 5 weeks 9.30am-12.30pm Fee: £75(F)/£56(R) starts 3rd June

Explore the possibilities of using your sewing machine in a more creative way by learning how to accomplish the skill of free machine embroidery. This course will take you from the basics through to more advanced techniques. It is essential that you use your own sewing machine and that it is in good working order. Ring the tutor Pauline Verrinder on 01954 260358 if you have any queries. Material extra.

**Fitness for Mature Movers (Daytime
Cottenham Village College) – 5 weeks
1.15–2.15pm Fee: £20 starts 3rd June**

Join us to gently stretch and tone in a friendly class. All movements to your own ability and will improve your balance and agility. All welcome – you really are never too old to start toning those muscles!

**Improve Your French Year 1(Term 3 of a 3
term course) – 10 weeks 7.00-9.00pm
Fee: £90(F)/£68(R) starts 22nd April**

For learners with at least one year's knowledge/experience of French. If you know the basics such as buying food, booking a hotel room, travelling by public transport and you would like to go on developing your skills further, then this course is for you.

**Patchwork & Quilting (daytime) – 5 weeks
10.00am-2.30pm Fee: £90(F)/£68(R) starts
22nd April**

For beginners or those with a little experience. Learn all the key skills of cutting, piecing, quilt assembly, quilting and binding to make a 6 block lap sampler quilt measuring. Students must bring their own sewing machines, fabric and thread. Full requirements list provided at enrolment.

**Ruth's Latin Dance Fitness – 7 weeks 7.30-
8.30pm Fee: £32 starts 22nd April**

Want to get fit, have fun and learn a bit of sizzle along the way? Come along to Ruth's Latin Dance Fitness class where moves may be crazy and fun. Each muscle in your body gets a workout to pulsating music from around the world chosen for exercisability, danceability and cultural roots.

THURSDAY

**Adult Ballet (Daytime) – 10 weeks 10.00-
11.00am Fee: £50 – starts 23rd April – classes
at Cottenham Community Centre.**

For those who attended ballet classes as children or complete beginners, this class is designed to teach style, co-ordination, terminology and the steps that are the building blocks for ballet. A great dance class for having fun while developing tone and strength throughout the body.

**Upholstery (Daytime) – 10 weeks 10.00am-
3.30pm Fee: £230(F)/£172(R) (Furniture and
materials purchased by the learner) starts
23rd April – Course currently full contact us
for waiting list.**

This course requires no prior experience, just enthusiasm and a love of the craft. Whether you are new to upholstery and want to refurbish a simple dining chair, or more adventurously, an armchair, this course is for you. All the correct techniques of upholstery are covered for traditional and modern furniture. Students need to bring their own piece of furniture to work on.

FRIDAY

**Upholstery (Daytime) – 10 weeks 10.00am
-3.30pm Fee: £230(F)/£172(R) (Furniture and
materials purchased by learner) starts 24th
April – Course currently full contact us for
waiting list.**

This course requires no prior experience, just enthusiasm and a love of the craft. Whether you are

new to upholstery and want to refurbish a simple dining chair, or more adventurously, an armchair, this course is for you. All the correct techniques of upholstery are covered for traditional and modern furniture. Students need to bring their own piece of furniture to work on.

SATURDAY DAY SCHOOLS COTTENHAM VILLAGE COLLEGE

Time: 10am – 4pm (unless otherwise stated)

Cost: £30(f)/£23(r)* unless otherwise stated

(*applicable to those in receipt of means tested benefit, see Booking Form)

(Please note all students will need to bring a packed lunch for whole day courses.

Materials are extra where stated)

SATURDAY 16th MAY

Cooking for Men – Kevin Hodgson

Are you struggling with cooking? Afraid of the oven? You'll learn to cook some simple and tasty dishes with confidence on this course. A list of dishes to choose from will be available on booking a place on this relaxed and fun day of cooking.

Emergency First Aid at Work – Colin

Fordham Fee: £60

On this one day course you will acquire new skills to enable you to handle lifesaving situations at home, work or on the road. Theoretical and practical training is given. A certificate will be awarded for successful completion of the course. A First Aid Manual is included in the fee.

Mixed Media & Stitch – Pauline Verrinder

During this fun and exciting day school we will be experimenting with a variety of mixed media techniques to create unique fabric and paper surfaces suitable for stitch and other crafts. We will be using Gesso, Transfer Paints, Acrylic Paints/Inks, Evolon and Gelliplates. No experience is required for this workshop, (only enthusiasm) as we will be using only basic hand stitch. Materials extra.

Stitch & Sew Workshop – Pamela Tasker

Do you have a sewing project you are struggling with or a UFO (Un-finished Object)? Are you struggling to understand your sewing machine? Or do you want the time to just come along and sew for a day with an expert tutor on hand to help and advise?

Willow Weaving Plant Climbers & Structures – Sue Kirk

Make two climbers in a day or a plant climber in the morning and a garden structure in the afternoon. Garden structures to choose from include a willow dragonfly, hanging basket or fan trellis. Suitable for beginners. Materials costs are extra.

Screen Printing – Ricki Outis

In this session the emphasis is on the experimental, using screen fillers with the silk screen to create painterly effects and texture on fabric. The day is aimed at those with some experience of screen printing and it is an opportunity to work in a studio atmosphere with tutor support. An A4 screen and squeegee is provided for use during the day. Materials extra.

Spreadsheets for a Day (Microsoft Excel) – Anju Satpall

This course is designed for learners who have basic knowledge of Spreadsheets and want to enhance their skills and build confidence in using Excel. Using extension tasks you will gain more practical experience and become proficient in Excel.

MORE Getting to Know Your iPad – Denis Pemberton (10am–2.30pm) Fee: £20

Bring your iPad along. This course is focused towards learners that have some experience with using an iPad but want to know more advanced techniques. Suitable for those who have already attended our 2 hour basic workshop "Getting to know your iPad".

SATURDAY 13th JUNE

A Little Piece of Summer (Flower Arranging) – Julie Woods

Modern and Traditional flower arranging designs using plant material in season. Materials extra.

Feltmaking for Beginners – Lisa Fretwell

During this course you will be introduced to feltmaking using merino wool tops. You will learn how to make felt balls, pre-felts and then how to piece them together to make a finished piece. Materials extra.

Getting the Most from your Embellisher – Pauline Verrinder

Discover the potential of the Embellisher machine as a tool that contributes to the creativity of those who are interested in textiles. You will need to bring your own Embellisher machine to the course. Materials fee of £5 payable on the day to the tutor.

Mosaic Workshop – Terry Baker

An introduction to the ancient, beautiful, versatile and easy craft of mosaic. You will be given information about equipment, bases, adhesives, mosaic materials and grouts (including relevant Health & Safety advice). Small projects can include decorative panels, pan stands, mirror frames and house numbers. Even absolute beginners can expect to create beautiful and long lasting results. Material costs are extra.

Patchwork a Seminole Tote Bag – Mary McIntosh

Learn the technique of Seminole patchwork to make a tote bag measuring 16" x 12". Three different Seminole designs available. Machine stitching. Materials costs are extra.

Stitch & Sew Workshop – Pamela Tasker

Do you have a sewing project you are struggling with or a UFO (Un-finished Object)? Are you struggling to understand your sewing machine? Or do you want the time to just come along for a day and sew with an expert tutor on hand to help and advise?

Willow Weaving Round Baskets – Sue Kirk **COURSE FULL – Waiting List only**

Word Processing for a Day (Microsoft Word) – Anju Satpall

For learners who have basic knowledge of Microsoft Word and want to enhance their skills and build confidence in using this word processor that has become the industry standard. Using extension tasks you will gain more practical experience and become proficient in Word.

ACTIVITIES FOR CHILDREN AND YOUNG PEOPLE

Ballet - April Martin (Associate ARBTA & Member BDQT), any enquiries telephone 01954 200533

E-mail a.r.martin@ntlworld.com or tutusrus@ntlworld.com

Ballet - Cottenham Village College - Wednesday – 12 week term – Starts Wednesday 15th April 2015

	Time	1 Term
Cj51 Reception	3.45-4.15pm	£42.00
Cj52 School Year 1 – 2	4.15-4.45pm	£42.00
Cj53a School Years 2 – 4	4.45-5.15pm	£42.00
Cj53b School Years 4 – 6	5.15-5.50pm	£44.00
Cj54 School Year 6 upwards	5.50-7.00pm	£60.00

Children will need to be confident enough to stay without their parent/carer.

Please note fees are not refundable for absence from a class that is continuing to meet.

Cottenham Sports Centre boasts an array of high quality sports facilities; open to the public 5pm – 10pm Mon – Fri, and 9am – 5pm at weekends.

- Air conditioned modern fitness suite
- A dance / aerobics studio, with wood sprung floor
- A floodlight artificial turf pitch
- Multi use sports hall (3 badminton courts)
- Gymnasium (smaller hall suitable for martial arts, etc)
- Four floodlight tennis / netball courts
- Outdoor cricket nets
- Modern changing rooms, with showers and lockers



These excellent facilities are available to clubs, groups and individuals to hire on either a block booking or casual basis.

Our fitness suite, offers the very latest cardio vascular equipment; including treadmills, cross trainers, rowing machines, bikes and the revolutionary award winning Adaptive Motion Trainer (AMT) which “moves the way you do” adapting immediately to the natural movement of the body and changes in stride length, pace and direction. Plus a full range of Resistance Weight Machines.

Exercise no longer needs to be boring with our ‘Cardio Theatre’, giving you a choice of different TV channels to keep you entertained whilst you are exercising.

Personal Fitness Programmes - our personal one-to-one or group induction sessions with our Fitness Instructors, will introduce you to the equipment and design a programme to meet your aims. The fitness suite is available on a monthly payment basis or on a casual pay-as-you-go basis.

SPORTS COURSES

We run a number of term time sports courses for adults and children. These courses must be booked in advance. and paid at the first session.

Children and Young People Classes – Termly classes

Mondays

Badminton – Dan Valderas 10 Weeks – starting 20th April 2015
Badminton Juniors 5:30 – 6:30pm £38

Wednesdays

Student Sports Skills Fitness Training – Joe Clements – starting 15th April (6 weeks)
Age 11+ 3:20 – 4:20pm £12

Gymnastics – Paula Cook 10 weeks – starting 22nd April 2015
Age 5 – 7 years 4:00 – 5:00pm £50
Age 8 – 10 years 5:00 – 6:00pm £50
Age 11 years + 6:00 – 7:00pm £50

Thursdays

Kids Boxercise – Joe Clements – starting 16th April (6 weeks)
Age 11+ 3:20 – 4:20pm £12

Adult (F) = Full Rate and (R) = Reduced Rate. Reduced rates are available for the following:
Working Family Tax Credit,
Job Seeker's Allowance,
Income Based Benefit, State Pension Age, Full Time students aged 16 – 18

Fridays

Student Gym Based Circuits – 6 weeks – starting 17th April

11+	3:20 – 4:20pm	£12
-----	---------------	-----

Saturdays

Tennis – David Nation 10 weeks – starting 25th April 2015

Juniors	8 – 10 years	9:00 – 9:55am	£50
Mini's	4 – 7 years	10:00 – 10:55am	£50
Teenagers	11+	11:00 – 11:55am	£50

Children and Young People – pay as you go classes

Wednesdays (Term Time) Starting 15th April

Roller Skating	5:00 – 6:00pm	£2.80 Skate Hire + £1
Fridays (Term Time) Starting 17th April		
Roller Skating	5:00 – 6:30pm	£2.80 Skate Hire + £1
Artistic Skating	6:30 – 7:30pm	£3.60

Adult Classes – Termly classes

Adult (F) = Full Rate and (R) = Reduced Rate.

Mondays

Badminton 10 weeks starting 20th April

Beginners	6:30 - 7:30pm	£44(F)/£38(R)
Intermediate	7:30 - 8:45pm	£55(F)/£47.50(R)
Advanced	8:45 - 10:00pm	£55(F)/£47.50(R)

Neil Marsh Bootcamp Fitness

Starting 20th April (10 sessions)

Bootcamp Fitness	6:30 – 7:30pm	£45
------------------	---------------	-----

Bootcamp fitness brings you functional based movements in a challenging but fun environment. Designed to work the whole body for maximum results. Bootcamp fitness is a great and fun way to exercise each week.

Adult Tap starting 20th April (10 weeks)

Adult Tap	6:30 – 7:30pm	£50 / £40 (R) (Payment to Adult Learning)
-----------	---------------	---

For complete beginners, this class is designed to teach rhythm, co-ordination, terminology and the steps that are the building blocks for all tap dancing. Each session will consist of a warm-up, technique exercises and combinations before moving on to basic tap choreography. This is a great dance class for having fun while developing tone and strength throughout.

Adult Ballet starting 20th April (10 weeks)

Adult Ballet	7:30 – 8:30pm	£50 / £40 (R) (Payment to Adult Learning)
--------------	---------------	---

For those who attended ballet classes as children or complete beginners, this class is designed to teach style, co-ordination, terminology and the steps that are the building blocks for ballet. Each session will consist of a warm-up, technique exercises and combinations. A great dance class for having fun while developing tone and strength throughout the body.

Thursdays

New Core Fitness 7:00 – 8:00pm £4.50 per class

This challenging class works to tone and condition all major muscles of the torso, especially the abdominal and back muscles.

Saturdays

New Boxercise 10:00 – 11:00am £4.50 per class

Fast paced, high intensity class using basic, non contact boxing techniques.

The best stress buster around is one of the most effective forms of cross training.

Adult Tennis Lessons starting 25th April (10 weeks)

Saturdays 12:00 – 1:00pm £50

Come and develop your tennis skills whilst having fun! Our experienced Level 3 Tennis Coach, David Nation who has 7 years tennis coaching experience will be teaching the sessions. The classes are suitable for any ability.

All termly classes have a half term break w/c 25th May 2015.

Please note all fees must be paid at the start of the course/class.

GP REFERRAL CLASSES – SOUTH CAMBRIDGESHIRE – ACTIVE & HEALTHY 4 LIFE

Patients are referred by a Health Practitioner to improve their health through an individually tailored fitness programme over a 12 week course. Conditions that benefit from exercise include obesity, arthritis, high blood pressure and cholesterol, diabetes and depression.

How do I join?

If you think this scheme is for you please discuss it with your GP or Health Practitioner and they can complete a referral form for you.

Tuesdays

F4H Class (Y) 3:30 - 4:30pm and 4:30 - 5:30pm £72 (Twice a week, 24 sessions)

Thursdays

F4H Class (Y) 3:30 - 4:30pm and 4:30 - 5:30pm £72 (Twice a week, 24 sessions)

Plus assessments which cost £8 each and are undertaken at the beginning and end of the scheme. The Active and Healthy 4 Life scheme prices have been subsidised by South Cambridgeshire District Council and Cambridgeshire NHS.

Cottenham Sports Centre Tel. 01954 288760 or www.cvcweb.net

ENROLLING IN THE CLASSES

You may enrol in any of the adult or junior classes by using the booking form in this brochure or over the phone with a debit/credit card. If paying by credit card there is a fee of £2.50 per transaction (no charge for debit card payments). Bring or send your booking form (on page 40) to the College, and make cheques payable to 'COTTENHAM VILLAGE COLLEGE' for both adult and junior classes. You can also print off a copy of the booking form from our website <http://community.cvcweb.net>

ADULT LEARNING CLASSES:

In person: the office will be open weekdays 9.00am to 2.30pm and evenings from 6.30pm to 8.30pm Monday - Wednesday. Tel: 01954 288751

By email at: community@cvcweb.net with full details of the course, your name, address and telephone number.

By post: enclose a stamped addressed envelope if you would like your receipt posted back to you.

SPORTS CENTRE CLASSES:

Visit the Sports Centre Reception Tel: 01954 288760 from 5pm daily and from 9am at weekends.

COURSE FEES: must be paid in full at enrolment.

MATERIAL CHARGES: such as text books, ingredients for cookery classes, fabrics etc. - are NOT included in the cost.

CONCESSIONS: are available, but evidence of entitlement is required at enrolment or before (see Booking Form Page 40).

CLOSURE OF CLASSES - REFUNDS OF FEES

A full refund will be given when a class is closed due to small numbers. **Please note, fees are not refundable for absence from a class that is continuing to meet.**

INSURANCE AND LOSSES

Cottenham Village College cannot accept responsibility for accidents to members of clubs and classes other than those covered by the College's Public Liability Insurance, nor for loss of personal property left on the premises or in a car, nor for damage to cars and bicycles - parking is at your own risk.

EQUALITIES STATEMENT

Cambridgeshire County Council operates an Equality of Opportunity Policy. We will ensure that resources and equipment are accessible to all and make reasonable adjustments to ensure that all can access activities. If you have any specific needs which might affect your learning you are entitled to a confidential interview where we can look at the support that you require. We believe that everyone is entitled to learn in an environment that is free from discriminatory behaviour so that we build a community based on mutual trust and respect.

COMMUNITY FACILITIES AT COTTENHAM VILLAGE COLLEGE

Support for people with special needs

If you would like to attend a class but feel that you may need support to enable your participation, please contact the Adult Learning office on 01954 288751.

Transport Difficulties

If you would like to attend a class but have no transport please contact us on 01954 288751. We may be able to put you in touch with someone who can give you a lift.

Learning Partners

If you are interested in being a learning partner in a class of your choice (you do not pay fees) to enable you to offer help to someone requiring support, please get in touch with us – Tel: 01954 288747.

College Lunches

The lunches at Cottenham Village College are excellent value, why not come and try them on Fridays 1.00pm - please phone us to book on 01954 288944.

COTTENHAM SUMMER SCHOOL – 27TH–31ST JULY 2015

NEW this year, one day workshops – Why not come and join us, relax, have fun, enjoy a delicious lunch & perhaps learn a new skill. The fee for the one day workshops is £50 which includes lunch & refreshments.

Bespoke Lampshades – Monday 27th July - Kelly Caine

This fun workshop will show you everything you need to know to make your own drum lampshade from fabric. You will be shown how to transform an existing lampshade, and start one from scratch. You will then progress and design a more decorative lampshade. You will go away equipped with the knowledge, and some notes, so that you can make lots more at home, if you want to!

Pearls, Glorious Pearls – Tuesday 28th July - Kelly Caine

This fun workshop is all about pearls. You will learn how to professionally string them, and make a beautiful freshwater pearl bracelet. Manipulate them, and wire, to create a stunning pearl cuff, and even learn the skills to make a pair of earrings, which will match them both.

Bunting & Bags – Wednesday 29th July - Pamela Tasker

Join this workshop and learn to use your sewing machine with confidence. With your machine sewing skills then learn to make decorated bunting or an easy drawstring bag. The workshop is either for complete beginners or for those who have a new sewing machine and want to learn all about it.

Celebration Cakes – Thursday 30th July - Wendy Leaney

Have you ever wanted to create a beautiful celebration cake but not known how to go about it or looked at the cakes in a baker's window and hoped you could make something that's better value for money? This course, suitable for beginners, will show you how to make, bake and decorate a two tier vanilla or lemon sponge cake.

Dichroic Glass Jewellery – Friday 31st July - Fiona Gooch

Learn how to cut and fuse coloured and dichroic

glass into some unique and stunning pieces. In this session we will cover safety and basic techniques for handling and cutting and then we will be designing and assembling pendants and earrings. Glass needs 6-8 hours in the kiln so the tutor will fire your pieces after the session and they will be ready for collection within 5-10 days, or they can be posted out.

Is Beekeeping for you? – Tuesday 28th July - Stephen Poyser

This course is aimed as an explanatory introduction to keeping bees. It will deal with the financial, space and time commitments together with the rewards. Additional elements will include what equipment and clothing a beekeeper needs, the anatomy and life cycle of the honeybee, siting a hive, activities within the hive, harvesting the produce, pests, diseases and other problems together with information and guidance to point you in the right direction.

Silver Surfers – Tuesday 28th July - Denis Pemberton

This is an introduction to using the Internet and Emails safely and securely. We will cover Search Engines, Online Shopping, Sending & Receiving emails, we will also briefly have a look at Virus protection.

Introduction to Family History – Wednesday 29th July - Denis Pemberton

This is an Introduction course for complete beginners who wish to research their Family History. We will cover - Starting your Journey, Census Records, Birth, Death & Marriage Records & Creating an online account.

Established 21 years ago this is now a popular Summer event at Cottenham Village College, with a relaxed and friendly atmosphere, value for money, great lunches and an inspiring list of courses – see opposite. View our brochure at <http://community.cvcweb.net> or we can post you a brochure Email: community@cvcweb.net, Tel Enquiries: 01954 288751. Or see our new Facebook page (Adult Learning at Cottenham Village College)



Please like us to keep up to date with what courses are coming up and just see what we and our learners have been up to.

Cottenham Summer School

27th – 31st July

2015



For more information or a brochure, please contact us on
Tel: 01954 288751 • Email: community@cvcweb.net
or visit <http://community.cvcweb.net>

Textiles

Weaving on a Table Loom
with Anna Crutchley
Quilt in a week
with Mary McIntosh
Introduction to Felt Making
with Lisa Fretwell
Stitched Layers & Structures
with Pauline Verrinder
Spectacular Screen Printing
with Ricki Outis
Get Hooked on Crochet
with Emma Wilkinson

Drawing & Painting

Drawing – learning to see
with Sheila Bryan
Butterflies in Watercolour
with Georria Harriott
Landscapes in Watercolour
with David Hyde

Music

The Roots of Modern Guitar
with Brooks Williams

Walking

Exploring Cambridgeshire
with David Thomas

Crafts

Pattern Cutting
with Sally Tilley
Lino Printing
with Clive Riggs
Mosaics
with Terry Baker
Upholstery Workshop
with Cindy Mason
Willow Weaving
with Sue Kirk
Flower Arranging
with Julie Woods

One-day workshops

Bespoke Lampshades
with Kelly Caine
Pearls, Glorious Pearls
with Kelly Caine
Bunting & Bags
with Pamela Tasker
Celebration Cakes
with Wendy Leaney
Dichroic Glass Jewellery
with Fiona Gooch
Is Beekeeping for You?
with Stephen Poyser
Silver Surfers
with Denis Pemberton
Introduction to Family History
with Denis Pemberton

 Like us on Facebook
(Adult Learning at Cottenham Village College)

ADULT LEARNING
BOOKING FORM

TITLE	FORENAME	SURNAME	
ADDRESS			
POSTCODE			
D.O.B.:			
TEL:			
MOBILE:			
EMAIL:			
	COURSE NAME	COURSE FEE £	RECEIPT No.
1.			
2.			
3.			

ARE YOU ELIGIBLE FOR REDUCED FEES?

THE FOLLOWING GROUPS MAY CLAIM THE REDUCED RATE FOR LEISURE COURSES

- Working Family Tax Credit
- Job Seeker's Allowance
- Income Based Benefit
- If you receive the 'Guaranteed Credit' element of Pension Credit*
- Unwaged Dependent of above
- Students Aged 16 – 18

Please note that proof of above will be required otherwise full fee will be due.
*Learners in receipt of Guaranteed Credit (on its own or with savings credit) may be eligible for fee reduction and will be asked to produce the award notice.



ACTIVITIES FOR CHILDREN

The Cottenham Toy Library will hold lending/play sessions at the Salvation Army Barn on the High Street from 10 to 11.30am on April 17, May 1 and May 14, June 5, July 3 and July 17, and August 7 and August 21.

SUMMER READING CHALLENGE

This year the theme will be 'record breakers' and local libraries are getting prepared for the event which will run all through the summer vacation.

The Waterbeach Independent Library will be registering children in July. The children gain little pressies, puzzles and games along the way as they finish each of the six books they have to complete throughout the summer. This year the theme will be 'record breakers'. The children usually have a great time – over 70 took part last year.

The Cottenham Library is asking locals, young people in particular, to come to the library in Margett Street and help the children register for the challenge at the beginning of the summer holiday, talk to them about the books they have read and possibly help with craft type activities and setting up library displays. About two hours a week or more if they wish. Information from 0345 0455225 or <http://readingagency.org.uk/youngpeople/practitioners-guides/summer-reading-challenge-volunteering.html>

SPORTING OPPORTUNITIES

Try out a range of sports at the CVC's sports centre: the multi-sports morning offers badminton, curling, uni-hoc, cricket, football, basketball and tennis. If children want to concentrate on one sport in particular that's available too. Tennis coaching, with a qualified coach for 6-10 year olds; craft and cooking for 5 to 11 year olds; roller skating for any ages.

COTTENHAM COMMUNITY CENTRE

Children of primary school age can investigate Mad Science from March 30 to April 2 (4 days) and later from August 3- 7 (5 days). For the little ones, there will be Mucky Pups (10am Mondays), Little Humbugs, music and movement for toddlers (10.30am Wednesdays) and Early Years Ready Steady Play at 10am on Thursdays.

SUMMER HOLIDAY CLUBS

Organised by Kids Only, the club runs from Monday to Friday in Cottenham Village Hall, Lambs Lane, from 8am to 6pm for children aged 4 to 11. In term time they have breakfast and after-school clubs as well. Prices from www.kidsonlycottenham.co.uk or 01954 250025.

Waterbeach Wasps (after school play scheme) also runs a holiday club. Website waterbeach-wasps.org.uk or call 01223 861140.

BALLET POINTES

SCAMBS our contemporary dance group will be in action in Cottenham as part of the Family Festival. June also sees ballet tests for the Year 1 dancers (older dancers tests will be in October)

Summer term classes start on April 15 – see page 33 for class times and fees. The annual ballet performance by dancers from the April Burgess Martin School of Ballet which includes dancers from the community classes held on Wednesdays at Cottenham Village College takes place on May 9. This year it is a double bill: two ballets both

linked with the theme of love. The first is from Gustav Holst's opera "The Perfect Fool", the second is "A Midsummer Nights Dream".

Seven to 12 year olds can participate in Dramatica, an arts workshop holiday activity, that puts on an original play in two days. The plays are written by April, are light hearted and fun, involving drama and dance.

For more information about any of the above contact April Martin on 01954 200533 or email tutusrus@ntlworld.com or go to website www.abmschoolofdance.co.uk



Cottenham Sports Centre

**Providing all your
sport and leisure needs**

All facilities available to the public and to clubs/groups

Facilities

- **Multi-use Sports Hall**
- **Fitness Suite** 20 station suite equipped with cv machines, resistance machines and free weights
- **Fitness Classes**
- **Dance/Aerobics Studio**
- **Gymnasium** suitable for martial arts and trampolining
- **Floodlit 3G Artificial Turf Pitch**
- **Floodlit Tennis/Netball Courts**

Parties

- **Children's Sports Parties**
- **Bouncy Fun Parties** and
- **Toddler Parties**

Telephone 01954 288760

High Street, Cottenham, Cambridge CB24 8UA

email: sportscentre@cvcweb.net

www.cvcweb.net

WATERBEACH NEWS

BOOK-LOVING ACTION

Maggie Crane, librarian, invites everyone to World Book Night on April 23, with a free book, wine, juices, nibbles and cake. The library is also extending its lending service to other playgroups after success at the Little Stars Nursery on the barracks site. Books are read to the three groups of children before they have their rest period and the response has been very good. On Fridays, the library opens half an hour early, at 2pm, for carers of babies and pre-school children to enjoy books together. The very active independent library has also donated several large print books to the local senior citizens residential home for the pleasure of the not-so-mobile.

VOLUNTEERS NEEDED

The PTA at Waterbeach primary school are keen to find some extra volunteers (waterbeachpta@gmail.com). The big fundraising drive of the PTA, working with the staff, is to buy new computing resources for the pupils to bring the school's IT equipment up to date.

If you have a musical skill or sporting interest and like to encourage others, WAY – Waterbeach and Landbeach Action for Youth – would welcome you. The youth club in the Tillage Hall, Landbeach, is open three nights a week for 11-18 year olds, from 7 to 9pm, and the youth workers could do with some back up for the various activities. Being on hand once a week or fortnight would be very helpful! Details from Shelagh Robertson 01223 860445 or waterbeachway@gmail.com

ECO OIL

Cambridgeshire ACRE's community oil buying scheme is designed to help purchasers of central heating oil to make savings by buying in bulk. The scheme is open to anyone in Cambridgeshire and community buildings such as churches and village halls as well as businesses which are reliant upon heating oil can join too. The annual membership fee for domestic users is £20 and covers as many oil orders as you need during the year.

Through partnership with AF Affinity Limited, a subsidiary of Anglia Farmers Limited, the

leading agricultural purchasing co-operative in the United Kingdom, the scheme makes the most of collective purchasing power. The average saving is usually 2pence per litre against online prices. The environment benefits too as every time a tanker comes out to make a delivery, it is using a lot of diesel – a full tanker can get as little as a horrifying 8 miles per gallon. If deliveries are organised so that one tanker delivers to several customers in a village, instead of making lots of individual deliveries, the fuel consumption is reduced and so is traffic in the village. If interested see website www.cambsacre.org.uk or email oil@cambsacre.org.uk

KEEPING WATERBEACH RURAL

Concerns about increased traffic and flooding problems as well as the number of houses to be built on the barracks site, 6500, will be among the issues raised at a public meeting to be held at Waterbeach School on September 18 at 7.30pm. The proposed local plan of SCDC allocates the barracks, together with adjoining land to the east and north which includes lakeside settings alongside the Wicken Fen, as a new settlement. County councillor Maurice Leeke, and district councillors James Hockney and Peter Johnson have expressed dissatisfaction with the plan. Cllr Johnson's view is that houses should be kept to the built area of the barracks, which would bring forward houses sooner, benefiting the local economy and helping local housing needs.

DIRECTORY

1st Waterbeach Brownies

Tiffany Langton 01223 862548

1st Waterbeach Guides

Holli Bielby 01223 528383

1st Waterbeach Rainbows

June Stephen 07956 949964

Scout Group

William Moon 01223 440259

Beach Bowls Club

W. Clough 01223 861386

[continued on page 45]

Passionate
about...



Handpicked Properties with Private Pools

A selection of beautiful individual villas & houses in tranquil rural settings
& areas of traditional local culture.

SPAIN • BALEARICS • LANZAROTE • FRANCE • ITALY • CROATIA
• GREECE • PORTUGAL


Your Local
Travel
Company

Vintage
travel

Now in our 25th year

Call for brochure or to speak to one of our specialists

01954 261431 or visit our website
www.vintagetravel.co.uk

ABTA  HOLIDAYS WITH
100% FINANCIAL PROTECTION

CAMBRIDGE ENVIRO GUTTER CLEANING

Home/Business/Commercial

Clean gutters prevent damage
to your house, Stops pointing and
blown rendering and keeps
paint work cleaner.

*We vacuum your gutters then
show you your clean gutters from the
ground using CCTV so you can
see the finished results.*

**No Ladders. No Mess. No Fuss.
OAP Discounts**

See Web site or call 0792 6521135
www.cambridgeenviroguttercleaning.co.uk



LEEWAY BUILDING SERVICES LTD

Property Extensions, Renovations,
Conversions and Alterations

All aspects of building work undertaken;
specialising in extensions, conversions,
alterations, garage and loft conversions,
underground drainage work, heating
systems, re-wires, general plastering,
replacement windows, soffits, fascias
and guttering.

North View, 43 High Street,
Rampton, Cambridge CB24 8QE

Telephone: 01954 251164
Mobile: 07766 553484



info@leewaybuildingservices.co.uk
www.leewaybuildingservices.co.uk



Heaven Scent

43 Telegraph Street, Cottenham, CB24 8QU

Sports Massage
Swedish Massage
Facials, Make-up
Electrolysis, Waxing
Manicures and Pedicures
Lash and Brow Tints
Lash Perm, Ear Piercing
Gift Vouchers

Telephone: 01954 200130
Mobile: 07925169697

Email: helenegautrey@hotmail.com
Website: www.heavenscentuk.com

Helene Gautrey
BTEC National Diploma
in Beauty Therapy (2002)
VTCT Diploma in Sports Massage
BABTAC



Beaches Community Car Service	07807 875878	Waterbeach Community Players	Julie Petrucci..... 01223 880023
Denson Close Social Club		Waterbeach Community Playgroup	Jacqui Woods 01223 440769
May Beckitt..... 01223 660475		Waterbeach Day Centre for the Elderly	William Bullivant 01223 862506
Doctors Surgery – Waterbeach	01223 860387	Waterbeach Indep. Lending Library (WILL)	Maggie Crane..... 01223 440560
		Waterbeach School	01223 718988
Parish Paths Group		Waterbeach Salvation Army	Colin Hamed 01223 480190
D. Armstrong 01223 861586		Waterbeach School P.T.A	Lianne Parrett..... 07476 778044
RBL – Waterbeach & Landbeach		Waterbeach Turbary Charity	Pam Gooding 01223 861003
Norman Foster 01223 474622		Waterbeach United Charities	Pam Gooding 01223 861003
St Lawrence's Catholic Church	01223 704640	Waterbeach Village Society	Ray Rice 01223 860663
		Waterbeach WI	Sheila Lynn 01223 860948
St. John's Church		Waterbeach Wives Group	Sheila Gill 01223 861999
Rev. Paul Butler 01223 860353			
The Way Project			
Sarah Tennant..... 07938 381592			
Wasps (After School Play Scheme)			
Zoe & Wayne Badcock 01223 861140			
Waterbeach Baptist Chapel			
Martin Ensell..... 01223 862494			
Waterbeach Brass			
David Pell..... 01223 860396			
Waterbeach Community Association			
Jacqui Rabbett..... 01223 860993			
Pam Clack (Secretary) 01223 476601			

LANDART

LANDSCAPE CONTRACTORS LTD

*Designers & Builders of Award
Winning Gardens*

HTA/APL National Award Winners 2002 & 2003

01954 261412

LANDART

Coldharbour Farm, Over Road
Willingham, Cambridge CB24 5EY
www.landart.uk.com

IVETT & REED

QUALITY SET IN STONE

Ivett & Reed is a family business which has been creating and fixing *quality memorials* for East Anglian parishes since 1896, delivering service with sensitivity.

All memorials are *crafted in our own workshops*, drawing on over a century's worth of knowledge, skills and experience to help you make your decision.

Our *dedicated memorial showroom*, one of the largest in the UK, displays a selection from our vast range of headstones, plaques and vases. In addition we carry out all kinds of renovation work.



We are open six days a week and provide dedicated free parking

615 Newmarket Road, Cambridge CB5 8PA TEL: 01223 213500 WEB: www.ivettandreed.co.uk
Monday to Saturday 8.15am – 5pm (closed Sundays and Bank Holidays)

Cutting Edge PC

**PC REPAIR, UPGRADE AND
BUILDING SERVICE**
Cottenham, Cambridge

Computer Repair
Component Upgrade
Custom PC Building
Microsoft Windows Problems
Virus/Spyware Removal
Networking
Software Installation
Internet Setup/Help

Phone: 01954 250058
Mobile: 07913 851433
email: enquiries@ce-pc.co.uk
www.ce-pc.co.uk



PHYSIOMOBILE

Tiffany de la Cour

BSc. MCSP

Registered with the Health and Care
Professions Council

- **Back and neck pain**
- **Post operative rehabilitation**
- **Arm, hand and shoulder problems**
- **Sports injuries**
- **Hip, knee and ankle pain**
- **Repetitive strains**
- **Postural problems**



Self referral accepted
Recognised by all major insurers

Prime Time Fitness, Oakington
Road, Girton, Cambridge CB3 0QH

07879 642697

www.physiomobile.co.uk

Also at: Fen Ditton and Milton

King & Co Solicitors

238 High Street Cottenham
Cambridge CB24 8RZ
Tel: 01954 251818

Open:
Mon-Thurs
9.00am - 5.00pm
Fri 9.00am - 4.00pm

CAR PARK AT OFFICE
FREE VERBAL OR WRITTEN QUOTATIONS GIVEN
OFFICES IN CENTRAL
CAMBRIDGE AS WELL

PEST PROBLEM?

07836 245670
01954 230708

LOCAL, PROFESSIONAL, TRUSTED

Rapid, qualified & safe **pest control** services for
local residents, farms, commercial premises, schools,
hotels & businesses.

We effectively control **rats, mice, rabbits, ants, fleas,
cockroaches, wasps & moles.**

If you are looking for **one off, emergency or long-term**
pest management solutions, contact DRE Pest Control.



19 WALLMANS LANE
SWAVESEY
CAMBRIDGE
CB24 4QY



www.drepestcontrol.co.uk

J & G BLINDS

CONSERVATORY & WINDOW BLINDS

**SEALED
UNITS**



AWNINGS

Tel: 01954 261149
Mobile: 07847 559208
Email: sales@jandgblinds.com

Reliable - Local - Friendly - Family Business

Over 20 years experience

ELECTROCERT

Part P - Registered Electrician

- ✓ Assessment of the electrical safety of your wiring
- ✓ Periodic inspection and testing
- ✓ Fuse board replacement and upgrades
- ✓ Extra sockets and lighting points
- ✓ Bathroom electrical installations
- ✓ Kitchen electrical installations
- ✓ Realistic prices with value for money
- ✓ Immersion heater supplies
- ✓ All work fully guaranteed and insured
- ✓ Garden lights and water features
- ✓ FREE quotations and advice
- ✓ No job too small



Call Peter on
01954 775003 or 07796 260735

Email: peter@electrocert.co.uk

10% Discount for Senior Citizens
www.electrocert.co.uk

THE ELECTION

Did you know that if you're asked to register to vote (and you meet the conditions for registering – ie, you're 16 or over and are British or a national of an EU or Commonwealth country) and don't do so, your local Electoral Registration Office could fine you £80. You won't, however, be fined if you have a valid reason such as a long stay in hospital, or you have severe learning difficulties. Though you can register at 16 voting age is 18. If you haven't registered, you still have time to do so and can vote on 7th May.

Apply to scambs.gov.uk for all registration forms, including proxy (voting on behalf of someone else) and postal (if you are away on election day 7th May). Once registered you will receive your ballot paper and a statement to sign nine working days before the election. A proxy vote applies only to a specific election.

The deadline for receiving applications for registration to vote is 12 working days from the election: 20th April. The deadline for new postal vote and proxy postal applications is 5pm on Tuesday 21st April.

There are two types of electoral roll: the open register (this is available to anyone who wants to buy a copy such as businesses, and can be viewed at a public library) and the full version. You can opt out of being included in the open register and this doesn't affect your right to vote. Everyone's name and address are included in the full register which is used for elections (and for choosing people for jury duty, soon to be up to age 75).

Parliament is dissolved on Monday 30th March and all MPs stand down. Publication of those standing for election (and any objections disposed of) is 4pm on Friday 10th April. Voting for the South Cambridgeshire Member of Parliament and district councillors (in two wards: Cottenham and Willingham) takes place between 7am and 10pm.

TAIT FINANCIAL SERVICES

WEALTH MANAGEMENT CONSULTANTS

Mastermind your financial future

We provide an experienced wealth management service and offer specialist advice in a wide range of areas including:

- Investment planning
- Retirement planning
- Inheritance Tax planning

For further details contact James Tait on:

Tel: 07768 305151

Email: james.tait@sjpp.co.uk

Website: www.taitfinancialservices.co.uk

HEALTHCARE NEWS

PATIENT OR PARTICIPANT

If you are concerned about the National Health Service or want to know more about what changes are occurring and how they might affect you, you have some options. One of the easiest is as near as your GP surgery: to join a Patient Participation Group. PPGs are made up of patients who comment on and discuss aspects of healthcare at the surgery, and the surgery uses the feedback to improve services. There are meetings with surgery staff four times a year for updates and to raise concerns. You can even be a virtual member – by email. It only needs you to collect a form at your surgery to join.

HEALTHWATCH CAMBRIDGESHIRE

This is a valuable resource when you want to find out about organisations that provide health and social care. It is an independent group, funded by the Cambridgeshire County Council, which aims

to make sure you have a say about these services, whether it is a concern or complaint. Healthwatch can tell you who could help you sort it out. And your experiences count, for they pass the information on – without identifying you in any way – to help improve care. They have ongoing consultations which you can find on their website: www.healthwatchcambridgeshire.co.uk or call 01480 420628. You can write too: to the Freepost address Healthwatch Cambridgeshire RTHA-RTYE-SATT.

FAMILY CARERS PRESCRIPTION

When you are caring for someone, your own health and wellbeing is important. Your GP surgery can provide a prescription which gives you access to a specialist worker at Carers Trust Cambridgeshire who will discuss your options (including whether you need a break and how it can be arranged). Ask your surgery for a phone appointment with your doctor to explain your circumstances and agree the prescription so the Carers Trust can support you.

LEE CODRINGTON CONSTRUCTION



DESIGN & BUILD
NEW BUILDS
EXTENSIONS
ALTERATIONS
RENOVATIONS
LANDSCAPES

T → 01223 864 080

M → 07980 069 253

LC®

4 SPALDINGS LANE, LANDBEACH, CAMBRIDGESHIRE

e: info@leecodrington.com

A.R.Aspinall & Sons Ltd

Tel: 01954 234966 Fax: 01954 234967

Unit 11 Norman Way Ind Est, Over, Cambs, CB24 5QE.

www.araspinall.co.uk

Suppliers to the trade and DIY enthusiast of all types of building materials ranging from:

Bricks Concrete Blocks Lintels Cement Sand
Gravel Hardcore Timber Fixings Footwear
Decorating Supplies Industrial clothing Paving Slabs
Tools for any job Electrical & Plumbing Fittings



WE OFFER A FREE LOCAL DELIVERY SERVICE!

COOKER CARE

The green oven
cleaning company



We'll make your oven shine

- Independent, local service
- Realistic pricing with NO VAT charge
- Discounts for regular customers
- No mess
- Only non-toxic, non-caustic products
- Child and Pet friendly

Call 07950 483900

www.cookercare.co.uk



Domestic, Commercial, Industrial & Agricultural

For all your electrical installation, Inspection & Testing and repairs, contact us for a **free** no obligation quotation.

Call; 01223 430 430
Mbl; 07836 780620
Email; Enquiries@cambridge-electrical.co.uk
Website; www.cambridge-electrical.co.uk

Celebrating over "25 years" in business.

NEW YEAR, NEW BOILER?



Thankfully, Spring is just around the corner!

Have you got a new building or home improvement project on the horizon? Perhaps you are considering replacing an old inefficient boiler that has struggled this winter with a new high efficiency unit. Cut your heating costs this year, call IJC for a no obligation quote today.

Not looking to upgrade? Why not flush your heating system and update the controls for more efficiency and smaller bills.

call: **01954 782920**

or visit: www.ijcbuildingservices.co.uk

IJC is a family run Cambridgeshire business with over 30 years' experience. We offer a comprehensive range of domestic and small commercial works across all forms of plumbing, heating and renewable services.



45 Viking Way Bar Hill,
Cambridge, CB23 8EL

176a High Street
Cottenham
Cambridge
CB4 8RX

Tel: 01954 250280
Email: enquiries@mhhp.co.uk

Also at Soham
Tel: 01353 722060

MHH

THE MHH PARTNERSHIP
Chartered Certified Accountants

We provide a professional, friendly service to small and medium sized businesses, including the following. Please call us for a free initial consultation.

- Year End Accounts
- Self Assessment Tax Returns
- Business and Personal Taxation
- Limited Company Accounts
- Management Accounting
- Payroll
- Budgets and Bank Presentations
- Monthly Book-keeping and VAT
- General Business Advice

Partners: Michael Hawes FCCA • Helen Hawes FMAAT

Cottenham Community Centre Day by Day

All activities in main hall unless marked studio or coffee shop

MONDAY

Mucky pups 10–11am (hello@muckypupscambridge.co.uk); Zumbatomic 3.30–4pm; Zumba 7–8pm. Contact Jo Kinser (jo@jikdancin.com) re any of the zumba classes; Community Navigators 2–3pm in the Coffee shop every other Monday – www.care-network.org.uk

TUESDAY

Yoga 10–11.30am (denise@sibleymooreyoga.co.uk); Pilates Entry (for beginners) 10.15–11.15 (studio) Pilates Plus (intermediate) 11.30–12.30, sessions £7, Miranda de Vries (miranda@mi-time.eu)

WEDNESDAY

Adult ballet (term time in studio) 10–11am reserve a place (jdrinkwater@cvcweb.net); Little Humbugs (singing and music for babies and toddlers) 10.30–11.30, £2.50 (littlehumbugs@gmail.com); Whirl & Twirl, 7–10pm, Irene.baldry318@btinternet.com; CCC Knitting Group in coffee shop from 10 am – just come along and enjoy helping others.

THURSDAY

Ready Steady Play (early years) 10–11am (MLam@histon.cambs.sch.uk); Adult ballet (term time in studio) 10–11am reserve a place (jdrinkwater@cvcweb.net);

VOLUNTEERS WELCOME

Become part of the team at the coffee shop, meet people and improve your skills. Or come in and enjoy a fantastic scone, cake or lunch. Opening times are 10am–4.30pm Monday, 10am–2pm Tuesday to Saturday (except bank holidays, Christmas and late August). For more information about volunteering contact manager@cottenhamcc.org or phone 01954 202109 during opening hours.

Teen Pilates (term time in studio) 3.30–4.15pm; Pilates for men (studio) 6.30–7.30pm; Mixed Ability Pilates Explore 7.30–8.30pm. *All Pilates/Barre Time/Stretchercise queries to miranda@mi-time.eu*; Cambs Hearing Help 2–4pm every second Thursday of month. www.cambridgeshirehearinghelp.org.uk

FRIDAY

Yoga (studio) short terms only 10.00–11.30am, wiltrud.jackson@yahoo.co.uk; Mixed Ability Pilates Explore 10–11am; FlexAware (studio) 11.35am–12.35pm; Pilates Entry (for beginners) (studio) 12.35–1.35pm; Stretchercise (studio) 5–6pm. *All Pilates/Stretchercise queries to miranda@mi-time.eu*

SATURDAY AND SUNDAY

For Colour Awareness workshops, Defibrillator and First Aid training, bookings miranda@mi-time.eu; Dads Play 10.30–11.30 (2nd Saturday of month); Arts Night in coffee shop, 7.30–9.30pm (2nd and 4th Sundays); The Roost (in coffee shop and main hall 3rd Sunday) 3.00–4.30pm; Community Cinema First Sunday of the month 7.30pm and sometimes, for families, 2.30pm. Information from website: www.revcoffee.net or <https://www.facebook.com/CottenhamCommunityCinema> or email simon.oliver@cantab.net

ROOM HIRE

The Cottenham Community Centre is opposite the Co-Op on the High Street. It has three rooms (main hall, studio, coffee shop) for hire for new activities or parties. Catering can be provided. The hall is also great for businesses to use for training or meetings. Full entertainment licence etc held. See the website www.cottenhamcc.org or email smithmichaelstanley@hotmail.com

Van Rental

www.stuardarlingvans.co.uk

Cambridge

01223 441551

**Self drive daily van rental - Discounts for long term rental
Easy to reach out of town location**

Stuart Darling Limited, 3 Greenside, Waterbeach, Cambridge, CB25 9HW.



BEAUTY, RELAXATION AND A WARM WELCOME...

Specialists in Shellac nails, Manicures
& Pedicures, Spray Tanning, Hair removal,
Facials and Massage.

Stockists of Elemis Skincare, Sp@home
and much more...

Gift Vouchers now available online at
www.englishrosebeautyhouse.co.uk



16 Berrycroft, Willingham,
Cambridge CB24 5JX
01954 261176



“ At Little Acorns I
provide a happy,
healthy, clean and
stimulating home
environment for
every child. ”

- OFSTED Registered
- Advanced DBS Check
- Childcare Qualification
- Trained in Paediatric 1st Aid
- Daytime, Evening & Weekend Care
- School Drop Offs & Pick Ups

£5.00 per hour
07590 066 130
jennayardy@yahoo.co.uk



little acorns
From little acorns grow great Oaks

S.T.HOWELLS

Carpentry & Joinery

25 Rampton Road, Willingham, Cambridge, CB24 5JG

Mobile: 07748 011091 Tel: 01954 260790

s.howells25@btinternet.com

- **Fitted Kitchens**
- **Windows, Flooring**
- **Doors & Locks Fitted**
- **Decking, Fencing**
- **Skirting & Architrave**
- **Property Repairs**



LANDBEACH NEWS

OPEN DAY AT TITHE BARN

Trustees are needed to try and secure the future of the 500-year-old Grade II listed Tudor tithe barn, the last one in the county. The trust believes it would need to raise between £50,000 and £100,000 to rethatch and restore the building and give it a new future. Check out the Facebook page: [FriendsofLandbeachTitheBarn](#). If you have been fascinated by the TV telling of Hilary Mantel's *Wolf Hall*, this barn has its history set firmly in the time of Henry VIII. Check it out for yourself at the open day at this unique building on 11th April, from 10am to 1pm. Introductory talks at 10.45 and 11.45, plus Storytelling and an i-Spy sheet for families. Refreshments will be available, all proceeds to the 'save the barn' fund.

The footpath to the barn is opposite 2 Waterbeach Road, Landbeach CB25 9FA. Sturdy footwear is recommended.

HOW BATTY ARE WE?

Friends of Worts Meadow are intent on finding out more about bats in the village. It is an evening event (naturally), meeting in the Landbeach village hall car park on 6th July at 9pm. Led by Iain Webb of the Wildlife Trust, and using detectors, the aim is to listen for these nocturnal creatures and identify them. All bat species in the UK are legally protected.

FOR THE LITTLE ONES

Babies and toddlers are welcome at the Busytots sessions at Landbeach Village Hall every Wednesday from 10am to 12noon. There are also special sessions over the coming months:

11th Mar - Make a Mother's Day Card; 18th Mar - Shamrock handprint pictures; 1st Apr - Mini Easter Egg Hunt; 8th Apr - Grow your own cress egg Head; 17th Jun - Make a Father's Day card.

Messy play Summer Holiday sessions: 29th July - Sand theme; 5th Aug - Water theme; 12th Aug - Jelly theme; 19th Aug - Paint theme; 26th Aug - Cornflour slime

BELL RINGERS

We ring the bells in the tower of All Saints' Church Landbeach. This unique British tradition is suitable

for all ages, and you do not have to be a musician or churchgoer. We ring for half an hour before most services and we practise on Fridays, 6:30 to 8:30pm. Lessons are available for adults and children over 10, at 50p per session. Contact Tower Captain, Barbara Le Gallez, below. Or call in to the church when you hear the ringers in action.

LOCAL HISTORY GROUP

The Landbeach Society is for anyone interested in the history of the village, its place within the region and in protecting its environment. Membership is £3 a year and entrance to the monthly talks at the village hall is £3.50. Coming up:

Wednesday 15th April: Stand and Deliver!: highwaymen and Newmarket during the reign of Charles II. John Sutton; Wednesday 20th May: From Workhouse to Playhouse: a history of Mill Road. Becky Proctor; Saturday 20th June: Landbeach Lunch at 47 High Street.

DIRECTORY

Baptist Minister

Martin Ensell..... 01223 862494

Busytots Baby and Toddler Group

Gemma O'Shea..... busytots1@hotmail.co.uk

Coffee Mornings

Margaret Steane 01223 860128

Friends of Worts Meadow

Robert Humphrey..... 01223 863454

Landbeach Baptist Church

Neil Roberts 01223 860410

Landbeach Bell Ringers

Barbara Le Gallez 01223 860283

Landbeach Helpline

Maria Sylvester 01954 252400

Knit and Natter

Marion Lant 01223 860787

Landbeach Parish Church

Rev Paul Butler 01223 860353

Landbeach Society

Robert Stripe 01223 862297

Landbeach W.I.

Jane Ward 01223 440961



Crossways Garage

Oakington

Tel No (01223) 233003

Service, Repairs & Tyre Fitting to All Makes of Vehicles and Light Commercial

Approved MOT Testing Station

CROSSWAYS GARAGE
Tel: 01223 233003
Proprietor: D J PEGG

FRAGILE ROOF

Anti Motor Insulation



JRS

ROOFING SERVICES

Flat Roofing Specialist

All flat roofing undertaken – felt, single ply and liquid plastics
 All redecking and lead work • Repointing of chimneys
 Fascias, soffits and guttering
 General house maintenance
 Insurance work • Free advice and quotations
 All work guaranteed • Friendly efficient service

Tel: 01954 201088
 Mobile: 07885 030 547

CAMBRIDGE POND CLEANING SERVICE

Pond problems? We can help!

Over 20 years experience.

We do the mucky jobs you hate, so your fish enjoy a clear healthy pond.

- ◆ Pond Design
- ◆ Pond Vacuum Cleaning
- ◆ Filter Cleaning ◆ Water Testing
- ◆ UV Servicing ◆ Liner Repair
- ◆ Green Water Problems

See Web site or call 0792 6521135
www.cambridgepondcleaningservices.co.uk

OAP Discounts

Our customers say that it's a brilliant concept



Capability Barns at Fen Drayton houses a brilliant venue where gardeners and garden designers can see and experience our unique **display gardens**. See the immense range of natural hard landscaping products and you will understand why Bannold have gained such a matchless reputation. *Come and see for yourself.*

For our complimentary brochure, call us free on 0500 012231

Opening times Mon to Fri 7.30am to 5.00pm. Sat 9.00am to 1.00pm

Bannold®
always more choice



Specialists in natural hard landscaping materials

Capability Barns, Huntingdon Road,
Fen Drayton Cambridge CB24 4SD
T: 01954 231666 F: 01954 231522
Email: supplies@bannold.co.uk www.bannold.co.uk

PCHOME-CALL

...Cambridgeshire's favourite I.T. Support company!

OUR RATES AVERAGE 25%
CHEAPER THAN OUR TOP TEN
COMPETITORS



- ✓ PC MOT's and Repairs
- ✓ Virus and Spyware Removal
- ✓ New PC Builds and Upgrades
- ✓ Wireless Network Installs & Faults
- ✓ Broadband Installs & Faults

Are your PCs running painfully slow?
Is your PC continually crashing?

WE RESOLVE MOST
PROBLEMS ONSITE WITHIN
ONE HOUR

PC & Laptop sales
Leading brands repaired



VISITING HOMES &
BUSINESSES



Call us today for a free quotation!

01954 260 754

www.pchome-call.com

Editing, copywriting, proofreading

All your word stuff sorted.

*Whether you need web copy,
reports, letters, speeches, leaflets,
brochures or something else
– get in touch!*

Call Gail Bull on
01954 251 057 / 07767 621 390
or email
gailbull@mymotherscoat.com

people read what I write...

www.mymotherscoat.com

Landbeach Village Hall



Newly renovated offering
excellent modern facilities

Furnished lounge • Main hall
Superb kitchen • Onsite parking
Disabled facilities • Licensed bar

Ideal for every occasion

For further details contact: **Anne Bulman 01223 860692**

Website under construction
Registered Charity No. 203793

ADVERTISING IN THE FEN

Fen Edge News is distributed free to 6,700 homes
in Cottenham, Rampton, Landbeach, Waterbeach
and Willingham.

There are three issues a year:

NEXT ISSUE DEADLINE 17th JUNE 2015

ADVERTISING: advertising@fenedge.co.uk
or 01954 250082

EDITORIAL: wendy.dear@blueyonder.co.uk or
01954 712627.

WILLINGHAM NEWS

The Community Orchard is planted

Bruce and Irene Robjent sponsored the last fruit tree to be planted, a St Edmunds Russet apple, and dedicated it to French friends of the Fen Edge Twinning Association in Avrillé whose next exchange visit will be in 2016. This completed a five-year plan to improve Willingham village and parish planting, the Jubilee Field, woodland trees and to establish a community orchard with the help of a grant of nearly £18,000.

The idea for the orchard began when a few enthusiastic people suggested it to the Willingham Action Group (WAG) as a project with Graham Mumby acting as project manager. Having been on an orchard pruning/restoration course, he joined the Cambridge Orchard Group which meets periodically at the Wildlife Trust in Cambourne. There are over 15 community orchards in the Cambridge area and Graham believes that these recreate the wealth of biodiversity which existed before, help preserve heritage varieties and hopefully leave a legacy of veteran trees. There is also a community aspect: bringing together people who support a common cause that will live beyond those who created it.

The area of nearly 5 acres has 750 mixed native woodland trees and 120 mixed fruit and nut trees which have been planted over the last three winters by volunteers. Of these, 114 are planted on an 8x8m grid and sponsored by residents. Labels have been commissioned bearing the tree details and the sponsors' dedications. A circular area on the edge of the woodland is for picnics and eight wildflower plots have been seeded in the orchard area; it is planned to establish cowslips and plant bulbs next winter.

The land has the status of a 'Village Green', provided during the time of the Enclosures for recreation purposes. A watering system has been laid with hosepipes connecting into underground piping. Teams water the orchard trees every two weeks in summer to assist establishment. WAG will continue to look after the trees and run the orchard with assistance and support from Willingham Parish Council which owns the land.



This is a community project, says Graham, so all are welcome to enjoy the orchard and woodland area and indeed pick the fruit once the trees bear it. It is naturally hoped that the orchard will be treated with respect for all wanting to enjoy the produce.

Willingham already has an apple group – The Willingham Free Press. Members pick their own apples and also have access to an old commercial orchard. The apples are pressed for juice and cider making.

For more information about visiting the orchard e-mail graham@gwmumby.co.uk A seasonal photographic record can be viewed on the website <http://julespix.smugmug.com/Willingham-Community-Orchard>

Willingham Youth Centre Opened

Councillor Baird, Chairman SCDC, accompanied by WPC Chairman Councillor Andrew Cook and District Councillor Ray Manning officially opened the new Youth Centre on January 24, assisted by Reverend Linda Liversidge and other members of the Willingham Youth Trust (WYT). Tributes were paid to all those who contributed over many years of planning and fund raising especially Reverend Trevor Rowe, the former Baptist Minister. WYT was formed under his Chairmanship as a development of earlier initiatives of the Willingham Action Group. Also to Caroline Hyde who worked tirelessly in applying for grants and funding with great success.

The funding for the new building came from 106 development funds held by the Parish Council, SCDC and local donations. Recently the Fen Edge Community Association (FECA) gave a grant towards equipment.

[continued on page 61]



GROW your business

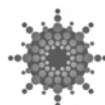
- Get an attractive, easy to use website.
- Get found on search engines.
- Get more business!

237 High Street, Cottenham

01223 755 667

hello@CambridgeWebSolutions.co.uk

www.CambridgeWebSolutions.co.uk



cambridgeweb**solutions**

There was an excellent turn out for the event as Willingham celebrated having a Youth Club based in dedicated premises with cakes, hot dogs and popcorn on offer plus refreshments. Many people who have been involved in providing activities for young people over the years were also present, expressing admiration for the new facility.

Youth Club evenings run on Wednesday 6.30-8.30pm and Thursday 6.30-8pm during term times, for ages 11-16, with a varied programme provided by trained youth workers. Community groups interested in using the new space or putting on an event should contact: Terry Jones 01954 200971 or e-mail david.jones147@ntlworld.com

DIRECTORY

Urgent Care Cambridgeshire. 0330 123 9131

Primary School

Mrs V Francis..... 01954 283030

Beavers, Cubs and Scouts

Mrs M Dellar..... 01954 260045

Ducklings Toddler Group

Rachel Robinson..... 07963 890971

HoneyPot Pre-School (term-time only)

Mrs D Van Dort..... 01954 201567

Tigger Toddlers

Jenny Rayner..... 01954 270122

Koola Kids..... 01954 260046

Holiday Playschemes Phoenix School

..... 01954 263113

Willingham Guides and Senior Section

Lynn McGoff..... 01954 261296

Bubbles/Messy Church

Rev L Liversidge..... 01954 263187

Heather Mellows..... 01954 270063

Bumps and Babies Group

Emma Tregenna..... 01954 261775

TOPS (Baptist Church Toddlers Group)

Hilary Wyllie..... 01954 261051

Kids' Friday Club (Baptist Church)

Loriane Bald..... 01954 261189

Allotments

Sue Ayling..... 01954 260718

Willingham Action Group (WAG)

Mike Tidball..... 01954 260647

Willingham Combined Charities

Mrs Gail Cook..... 01954 231272

Workers' Educational Association

Rosemary Mumford..... 01954 260934

Willingham Walkers

Mike Tidball..... 01954 260647

Willingham Youth Club

Linda Liversidge..... 01954 263187

Women's Institute

Jacky Sparks..... 01954 261831

Women's Royal British Legion

Mrs M Few..... 01954 260124

Cycling Club..... www.willinghamwheels.com

Tennis Club

John Graham..... 01954 231968

Willingham Sports Pavilion

Trudy Greygoose..... 07786 230559

Willingham Wolves (Boys & Girls Football)

..... willinghamwolvesfc.co.uk

Baptist Church

Rev. Paul Joel..... 01954 260051

Methodists (Ministerial Contact)

Rev Hilary Cheng..... 01223 700778

Roman Catholic Priest

Fr Edward Tredota..... 01480 462192

Salvation Army Captain

Major Theo Wood..... 01223 233492

Parish Church

Rev Linda Liversidge..... 01954 263187

County Heating & Plumbing Ltd

For All Your Plumbing Requirements

Mobile - 07818 417749

Home - 01223 862017

Email - countyhp@aol.com

www.countyheatingandplumbing.co.uk

7 Way Lane, Waterbeach
Cambridge, Cambridgeshire CB25 9NQ



Drop N Lock Limited

Self Storage Facility

Falcon Services, A10 Cambridge road, Stretham, Cambs CB6 3LU



Whether you are looking to move your home, or you need some temporary storage space for your business, we have a storage solution to help you.

We offer affordable, secure and reliable self storage solutions. We are a small family run business that looks forward to doing business with you

- ◆ Storage units from £23 per week
- ◆ Commercial / Business storage
- ◆ Household storage
- ◆ Student storage
- ◆ 24 Hour Access
- ◆ CCTV

☎ 01223 570280

Tom 07904747430 / David 07776292958

dropNlockcambridge@yahoo.co.uk

www.drop-N-lock-selfstorage.com

IMPINGTON ROOFING SERVICES LTD

ALL ASPECTS OF ROOFING

DOMESTIC, COMMERCIAL,
GRANT WORK UNDERTAKEN,
COLLEGES & UNIVERSITIES

NEW ROOFS - RE-ROOFS - REPAIRS

- Slates • Tiles • Felt • Commercial Roof Sheeting
- Chimney Rebuilding & Re-pointing
- Guttering • Leadwork • uPVC Cladding



ALL WORK GUARANTEED • FREE ESTIMATES
HIGHLY COMPETITIVE PRICES
PROMPT, RELIABLE, PROFESSIONAL SERVICE
INSURANCE BACKED GUARANTEES
COMMERCIAL ROOF SHEETING & CLADDING

(01223) 441852

MOBILE: 07836 296012

01223-441847 (FAX)

Unit 6, Convent Drive Ind Est, Waterbeach, Cambridge CB5 9QT

www.impington-roofing.co.uk



Target Print Ltd

Broad Lane, Cottenham, Cambridge CB24 8SW

Incorporating

QUAYSIDE PRESS and King Printers of Over

Telephone: **01954 251189** Email: **print@targetprint.org** Web: **www.targetprint.org**

business cards	letterheads & compliment slips	raffle tickets	brochures & manuals
price lists	folders	presentation packs	invitations & wedding stationery
envelopes	invoices & NCR sets	delivery notes & statements	leaflets
prospectuses	posters (up to A1 size)	continuous stationery	newsletters
			
photocopying	artwork	design	printing
	plan copying	large format	digital printing
		finishing	Post-it® Notes
			direct mailing