

**WALKS, TALKS
AND ROAD RUNS**

GET A TASTE OF THE FEF!

**Local Elections and
Neighbourhood Plans**

ADULT & FAMILY CLASSES

Put your love in writing!

FREE Home Consultation



Look after your kids with a Will - fix who will look after them if something happens to you!

Worried what they'll inherit? Tax, care fees or legal costs might eat into their inheritance?

A range of Trusts can help protect your assets



Old age may bring problems. Disability, Alzheimers, etc. Look after your family by setting up Lasting Powers of Attorney.

They MUST be organised BEFORE loss of mental capacity



'We always meant to get our Wills done...'

Don't leave it too late to protect your family!

Dying without a Will can cause major expense and misery for your family

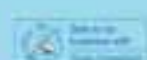


Don't let your family's last memory be a hefty bill for your funeral.

We check ALL main funeral providers so you can choose the best. **FREEZE** rising funeral costs today with a pre-paid funeral plan



www.justwillscambridge.com 01223 655 646



Your local office for a national Legal Services company, Just Wills & Legal Services Ltd.

The **Fen Edge Community Association** is a charity promoting and supporting Clubs, Groups and Societies in Cottenham, Landbeach, Rampton, Waterbeach and Willingham.

Contact Us

Neil Gough – Chair

✉ chair@fenedge.co.uk

🌐 www.fenedge.co.uk

📘 fenedgenews

🌐 www.fenedgefestival.co.uk

📘 fenedgefestival

Registered Charity No. **293020**

Spring/Summer 2017

- 4 FECA in action PLUS a glimpse of the FEF in June
- 7 What's on in the Fen Edge villages
- 9 FECA in Cottenham
- 13 Cottenham Community Centre activities
- 15 Cottenham Directory
- 17 Local road runs: Yesteryear, Fun Run, Wings4Life
- 19 Local Heroes: Gerry Brett and Chris Ward
- 21 Gardening: lawns and their care
- 25 Elections 4th May: the candidates and issues
- 28 CVC Summer School
- 29 Adult & Family classes
- 37 FECA in Landbeach
- 39 FEN EDGE walks
- 42 HOW TO ADVERTISE in the Fen Edge News
- 45 Fen Edge Parish Councils
- 47 FECA in Rampton
- 49 GP Advice: holiday vaccinations
- 51 Waterbeach news and Directory
- 53 FEN EDGE arts and crafts
- 54 FEN EDGE miscellany
- 57 FECA in Willingham and Directory

NATURAL MATERIALS. THE NATURAL CHOICE.

Soonemasonry expertise at Ivett & Reed is second to none – whether it is restoring, replacing or creating new stonework for windows, steps, copings or sills.

We hold stocks of Portland, Bath, York and Ancaster Hard White stones or we can work to your individual specification. We have an extensive stoneyard, workshops equipped with state-of-the-art machinery, a designated memorial showroom and spacious and stylish areas featuring our fireplaces, fires, stoves, worktops and tiles.

Call us on 01223 213500 for a quote or visit our stoneyard and showroom Monday – Saturday



www.ivettandreed.co.uk

IVETT & REED
QUALITY SET IN STONE



615 NEWMARKET ROAD, CAMBRIDGE CB5 8PA

FECA IN ACTION



BOWLED OVER!

The FECA Committee approved a grant of £1,000 to the Cottenham Bowls Club for a defibrillator. Said Neil Gough “We normally would not give an organisation a full grant but in this case, we approved it on the basis that the unit would be available to be borrowed for FECA events (such as the Festival and the Fun Run).”

Because of the importance of a defibrillator in the community, the Committee also requested that the club consider providing access to the unit for others in the vicinity (via a secure lock box, for instance) and that that club members be given training in how to use it. While operating it seems straightforward, in the heat of the moment, users should have the confidence of knowing what to do.

Pictured: Neil Gough with Bernard Goodin of the Bowls Club holding the defibrillator bought with a grant from FECA

TUESDAY'S A GOOD DAY IN COTTENHAM

Cottenham Day Centre is open every Tuesday to elderly people residing in Cottenham and Rampton, serving up a hot meal – a lifeline to many – and refreshments over several hours. It's all very friendly and relaxed and a great opportunity to chat or reminisce – for some this may be their only social contact. Transport by minibus is provided for those who might not be able to get there under their own steam.

The Centre is run entirely by volunteers who help with meal preparation, serving, and clearing up and washing up afterwards. They are always keen to hear from those who can give some time (not necessarily the whole day, or every week). The drivers are also volunteers who drive on a rota system, accompanied by an assistant to help people get on and off. If you want to be part of this rewarding community activity, contact Maire Collins, Chair, on mairecollins99@yahoo.co.uk or on 01954 200873.

There is a small charge for each person who attends, and the Centre relies on donations and fundraising to cover its costs. The Centre benefits when you use a membership card at the Co-op.

Pictured: Neil Gough presenting a cheque for £300 to Mrs Maire Collins. The Day Centre as a member of FECA applied for a grant for their Christmas lunch.



Letter received from Edward Kramer, Cottenham

Dear Neil,

I am very pleased to hear that FECA has awarded All Saints Church a grant of £750 towards our new communion rail (estimated to cost £25,000). We are very grateful and particularly pleased with this endorsement by the local community of what we are trying to achieve at All Saints. As we seek funds from grant-making bodies further afield we find that they are likely to look more favourably if we can demonstrate such local support.

Many thanks,

Edward

Help the FEF

The FEF is hoping to bag a massive cash boost from the Tesco Bags of Help initiative. The supermarket group teamed up with Groundwork to launch its community funding scheme which awards grants of £5,000, £2,000 and £1,000 – all raised from the 5p bag levy in the stores – to local projects.

Three groups in every Tesco region have been shortlisted to receive the cash award: Fen Edge Festival 2017 is one of them! Shoppers in Tesco stores during March to end of April can use tokens – given to them at the checkout – to vote for who they think should take away the top grant. Don't forget to ask for a token!

Tesco's Bags of Help project has already delivered over £27 million to more than 3,500 projects up and down the UK. Every other month, when votes are collected, three groups in each of Tesco's regions will be awarded funding. Neil Gough, Chair of the Fen Edge Community Association which organises the FEF said: "We're thrilled that our Festival has been selected to take part in the Bags of Help scheme and we hope lots of people in the Fen Edge villages will vote for it every time they shop at a Tesco store."

The scheme is open to community groups and charities looking to fund local projects. Anyone can nominate a project and organisations can apply online. To find out more visit www.tesco.com/bagsofhelp

TESCO
Bags of Help

FEN EDGE FESTIVAL – HERE'S A TASTER!

THE DATES Friday 23rd, Saturday 24th and Sunday 25th of June. Put them on your calendar!

FRIDAY Cottenham Toy Library kicks the Festival off with its Pre-School Fun Day. In the afternoon there's Bingo in the main marquee. In the evening the marquee will be decked out for the Cottenham Primary School PTCA Summer dance. This year's headliners are Swagger who are sure to get the weekend off to a great start. Ticket numbers are limited and will be in demand.

They go on sale in May (see p9).

SATURDAY & SUNDAY

Bring your friends and family, chairs and rugs and enjoy the atmosphere and free entertainment on the Village Green. There will be over 40 stalls, a great choice of food, activities and live demonstrations. Plus a bar in the main marquee.

MAIN MARQUEE

Entertainment by local groups, including Tyrannochorus and Cottenham Theatre Workshop. On Saturday evening party with Big 10. Renowned for their huge Ska and 2 Tone sound with 8-10 musicians on stage – including a brass section and singers – Big 10's performance will be a real treat for the senses! On Sunday night, Keith Pearson Trio provide the musical entertainment to bring the Festival to a mellow close.

THE VENUE Grab a glass of Pimms or a pint of beer and

settle down to enjoy live music and performances. Open both days thanks to sponsorship from the Aviva Community Fund. There's a great line-up in store for you.

AND FOR THE KIDS Rides, games and bouncy castles AND some great surprises: Magician Mr Marvel and Professor Diamond's Punch & Judy will keep the young (and the young at heart) amused.

BE A VOLUNTEER Staging an event the size of the Fen Edge Festival requires many people with the energy and willingness to help out. We need lots of volunteers on each of the days to make sure everyone can enjoy themselves and be safe while doing so. If you are able to get involved, even just for a few hours, please contact:

volunteer@fenedgefestival.co.uk

BOOKINGS AND EVENTS

All details will be on the Fen Edge Festival website as they are confirmed: www.fenedgefestival.co.uk – and track the latest updates on our Facebook page. See also p37, for some special news from Landbeach!

The Fen Edge Festival is organised and promoted by the Fen Edge Community Association which is a registered charity. The Association encompasses the villages of Cottenham, Landbeach, Rampton, Waterbeach and Willingham.

Firewood

by BC Landcrafts

Seasoned Hardwood Logs

Delivered throughout:

Cambridge - Ely - Newmarket - Huntingdon

Full details and prices available on

www.bclandcrafts.co.uk

07836 654252 : 01954 250830



1st Builders

Cambridge & East Anglia

www.1stbuilderscambridge.co.uk

01223 782392

EXTENSIONS
RENOVATIONS
RESTORATIONS
KITCHENS
BATHROOMS

GROUNDWORKS
LOFT CONVERSIONS
GARAGE CONVERSIONS
MASONRY
CARPENTRY

FEN EDGE EVENTS DIARY

What's on and when in the villages

APRIL

Easter 31st March to 17th April

18th Summer term begins

19th-22nd THE VICAR OF DIBLEY,

Cottenham Theatre Workshop, CVC (see p9)

19th Planning for Armageddon - Local Nuclear Bunkers, Landbeach Society (see p37)

21st Cottenham Village Society talk: The History of Chivers and Sons, manufacturers of preserves 1873-1919, All Saints Church hall, 7.30pm

23rd Yesteryear Road Run (see p17)

24th Annual parish meeting, Rampton (see p45)

28th Cottenham Gardeners' Club talk (see p9)

28th to 1st May Fen Edge Twinning visit to Avrille (see p55)

30th Rampton Relay and Fun Run (see p47)

MAY

3rd Annual parish meeting, Landbeach (see p45)

3rd AGM Parish Council, Willingham (see p45)

4th County council elections 7am -10pm (see p49)

5th Bingo Night, Cottenham Primary School, 7.30pm (see p9)

6th Whirl and Twirl Open Day, Cottenham Community Centre (see p9)

6th Fun Run, Cottenham (see p17)

7th Wings for life world run (see p17)

8th AGM Rampton Parish Council (see p45)

9th Annual parish meeting, Cottenham, Village Hall, 7.30pm (see p45)

17th Lady Margaret Beaufort in Cambridge, Landbeach Society (see p37)

17th Annual parish meeting, Willingham (see p45)

26th Five Ska, Live Ska Band, Willingham Social Club (see p59)

26th Cottenham Gardeners' Club talk (see p9)

26th-28th Annual football and beer festival, Waterbeach

29th Half-term

JUNE

2nd Custard Comedy Night, Willingham Social Club (see p59)

5th School resumes

10th Waterbeach Feast

11th Ely open gardens (see p23)

23rd, 24th, 25th FEN EDGE FESTIVAL (see p5)

24th Landbeach Society lunch (see p37)

29th - 1st July Willingham Beer festival (see p59)

30th Cottenham Gardeners' Club talk (see p9)

JULY

All weekends: Cambridge Open Studios (see p53)

8th Rampton Summer Fayre (see p47)

13th Cottenham Primary School Summer Fair, 5-7pm (see p9)

15th/16th Ramparts summer exhibition, Rampton (see p47)

15th Fen Edge Orchestra Concert for Summer, All Saints Church, Cottenham, 7.30pm (donations to church refurbishment fund)

18th Cottenham Gardeners' Club visit (see p9)

22nd School holidays start

24th-28th Cottenham Summer School (see p28)



Inside the wonderful old Tithe Barn at Landbeach. You can see it for yourself on the FEF weekend, 24 and 25th June (see p37)



Louise qualified as a dog groomer at the College of West Anglia and has been grooming at a local parlour for the last 4 years.

She has vast experience with most breeds of dogs.

Call today for an appointment on

01954 252869

67 Histon Road
Cottenham
Cambridge
CB24 8UF
www.wagglebumz.co.uk

Give your dog a treat and book today



RICHARD KENYON MASTER THATCHER

Of Bluntisham, Cambridgeshire.



Whether your thatch needs interim repair work, a replacement ridge and repair work or completely re-thatching, I offer a professional, friendly service where the quality of my trade excels.

01487 843377 • 07873 549872

info@rkenyonmasterthatcher.co.uk • www.rkenyonmasterthatcher.co.uk

I am a full member of the National Society of Master Thatchers, something I am still very proud of today. When I'm not up a ladder I'm a keen beekeeper, (please ask for a jar of honey if you see me)

FECA IN COTTENHAM

HERE'S A NEW VICAR FOR YOU!



Coming to a Village College near you each evening from 19th to 22nd April!! **THE VICAR OF DIBLEY** presented by Cottenham Theatre

Workshop. [Cue heavenly music!]

Directed by the talented Gloria Milne, this version of the BBC cult comedy classic is a stage play by Ian Gower and Paul Carpenter, which has been adapted from the original TV series by Richard Curtis and Paul Mayhew-Archer, with kind permission of Tiger Aspect Productions. A percentage of the royalties will go to Comic Relief as will proceeds from fun and games planned in the hall as part of the entertainment. This really will be a show that will make a difference!

Tickets are available via TicketSource, on our website www.cottenhamtheatre.com or by phone on 0333 666 4466 (a charge may apply). As well you can buy tickets at the Cottenham Community Centre on 1st, 5th or 18th April. Keep an eye on the website for any new developments or announcements!

2017 is also a special year for CTW as we celebrate our 40th anniversary! We will be presenting our annual pantomime at the end of the year (PS It's Aladdin!) AND we'll be at the Fen Edge Festival in Cottenham on 24th June, performing a special medley of our 'greatest hits' from our productions over the years. We'd love to see as many of you as possible – just come to the large marquee to enjoy the live entertainment.

Don't forget to like us on Facebook and follow us on Twitter @CottenhamCTW to stay up-to-date with all things CTW. We're always eager to have new people join us, whether it be helping backstage or in front of house everyone's skills can be put to good use! For more information, please email: cottenhamtheatre@gmail.com

Ben Shimmens

ACTIVE FUNDRAISING

The PTCA at Cottenham Primary School have a range of events planned (mostly for adults, to benefit the children at the school).

There's a **Bingo night** on Friday 5th May (open to all members of the community). Doors open at 7pm, eyes down at 7.30; £10 for 6 games and bonus jackpot ticket. Bar available but bring your own nibbles (no nuts

please). Tickets from Cottenham Primary School office.

Fen Edge Festival Dance: Friday, 23rd June, at 7pm, in the Marquee, Village Green. Tickets: £12.50 each.

Band: Swagger. PTCA Bar plus real ale bar provided by The Chequers of Cottenham. Bring your own nibbles.

Tickets on sale Friday 26th May on a first come, first served basis (400 available): from Cottenham Village College, Wards Greengrocers (High Street, Cottenham) and Cottenham Primary School.

Cottenham Primary School Summer Fair:

Thursday, 13 July 5-7pm. Bar, BBQ provided by Longhorn Farm Shop, cake stall, bouncy castles and much more.

Round Dance Club OPEN DAY

Whirl & Twirl Round Dance club are looking for new members. We meet at the Cottenham Community Centre, opposite the Co-op, every Wednesday evening 7.30pm till 9.30pm. Couples and singles welcome to learn to dance to a caller who gives instruction for all the moves as you dance. We dance to a large variety of music and dances include Waltz, Rumba, Quickstep, Jive, Two Step, Cha Cha, Foxtrot etc.

We are holding an Open Day on Saturday 6th May from 10am till 1.30pm. Come and join us for a free coffee to see what we do and hopefully enrol to join our club. Members pay £3 per year and £4 each for an evening's dancing. We are affiliated to the National Federation of Round Dance Clubs who organise dances throughout the UK and Germany.

COTTENHAM GARDENERS' CLUB

Cottenham Gardeners' Club usually meets on the last Friday of the month at Franklin Gardens Community Room. Refreshments are served from 7.30pm, followed by a talk at 7.45. Annual membership is £14, but guests are very welcome at a cost of £2 per meeting.

Our plans for the next few months:

28th April 'Strictly Daylilies' by Paula Dyason, local nursery owner, followed by a plant sale;

26th May 'Judging Anglia in Bloom' by David White, Vice Chairman Anglia in Bloom; 30th June 'Peckover House and Garden' by Veronica Bennett, NT volunteer; 18th July, visit to Strictly Daylilies Nursery, 5.30pm.

There will also be a garden party for members in June and a drinks party in August. For any further information please contact Aubrey Bould on 01954 250119.

Continued on Page 11

No mud, no mess and no mowing with...

easigrass™

CAMBRIDGESHIRE & EAST ANGLIA
the artificial grass company

Transform your outdoor space with

easigrass™
CAMBRIDGESHIRE & EAST ANGLIA

Whether you are looking to freshen up a lawn or you are putting together a whole new garden, investing in easigrass™ is a great way to transform outdoor space.

easigrass™ is becoming ever popular due to its low maintenance, realistic look and dream garden appeal. There's no mud or mess, no cutting or weeding, and it creates beautiful outdoor spaces for family and friends to enjoy.

Adds value to your property

Creates the "wow" factor

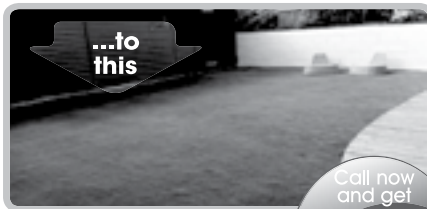
No more mud or mess

Outdoor fun all year round

Transform your garden

with an easigrass™ artificial lawn

It's time to plan your outdoor space




 cambseasigrass

Call now and get
5% off
this month only*



We are working in your area right now
and are offering a **FREE measuring and estimating service.**

 T: 0800 151 3351 (freephone)

 w : easigrass.com/uk/cambridgeshire

*Offer applies to full installations only

FECA IN COTTENHAM

Cottenham Bowls Club

Summer is a'coming in at the club, next to the Recreation Ground off Lambs Lane, starting in April and through to September. We are a successful and friendly club so why not give us a try.

HOW MUCH DOES IT COST? A full outdoor playing member pays £40 a year and £2 for every match they play in. To play indoor short mat (in winter, October to March, in the clubhouse) you pay £15. A social member pays £5, which entitles them to play internal games, and there is a £1 green fee. They can attend social events such as BBQs, fish 'n' chip night, etc.

WHAT TEAMS ARE THERE? In the Ely and District League, playing mainly on a Monday and Friday afternoon, there are 2 teams. In the Cambridge Business House Pairs Bowls League there are 2 teams: a men's and a mixed. They play in the evenings and the days are varied. In the Cambridge and District League one team in Division 2 and one in Division 3. They play in the evenings and the days are varied. Bowls Cambridgeshire County Open Triples is played in the evenings and the days are varied.

WHAT DO YOU NEED TO PLAY? A set of bowls but the club have some you can try. Some are for sale but you can usually pick up a second hand set at a reasonable price. A pair of flat soled shoes. If you play for a team you will need a pair of grey trousers and a white shirt or blouse. A club shirt is also available.

CONTACTS: Dave Parrack 01954 230732; Eric Hobbs 01954 251956; Christine Forster 01954 200720

WEBSITE: <https://www.hugofox.com/community/cottenham-bowls-club-8286/>

Cottenham Cricket Club News

This year, Cottenham CC will be 165 years old – quite an achievement – and we are very much looking forward to the new season, our 17th consecutive one in Senior League cricket. We're also going into 2017 with fresh impetus under our new Chairman, Ralph Lamble and 1st XI Captain, Jake Raven. Once again, we'll be running two adult teams in the CCA Leagues and also two junior sides at under-11 and under-13 levels and, by the time you read this, pre-season for everyone will be well under way. We wish all those involved every success.

We're always on the lookout for new players, young and older, so please get in touch.

CONTACTS: Club Secretary, David Chaplin 01954 250075 or, for the junior teams, Alan Raven 01954 250388.

Dave Partridge (Vice Chair)

LANDART
LANDSCAPE CONTRACTORS LTD

*Designers & Builders of Award
Winning Gardens*

HTA/APL National Award Winners 2002 & 2003

01954 261412

LANDART

Coldharbour Farm, Over Road
Willingham, Cambridge CB24 5EY
www.landart.uk.com

INDEPENDENT FINANCIAL ADVICE IS BEST

Free Consultation. No obligation.

That's the understanding when you talk to Nigel Bolitho about how to make your finances work to your best advantage. Get the benefit of his wide experience in all investment matters

**Pensions Savings Investments
Protection Tax Avoidance**

For sound, independent advice on all your investment plans, talk to Nigel Bolitho

**FREE CONSULTATION
NO OBLIGATION**

**BV
Services**

Mitchell House
High Street
Cottenham
Tel: (01954) 251521
Fax: (01954) 252420



London office:
Cliffords Inn
Fetter Lane
London
EC4A 1BY

Email: bolitho@enterprise.net
web: www.bvmoney.com



Authorised and regulated by the Financial Conduct Authority

COTTENHAM COMMUNITY CENTRE DAY BY DAY

(all activities in main hall unless marked 'studio' or 'coffee shop')

MONDAY

Mucky Pups 9.30-10.30 and 11.15 to 12.15, contact hello@muckypupscambridge.co.uk; NEW Adult ballet 11-12 (studio), contact community@cvcweb.net; NEW 4th dimension Dance classes 4pm and 5 pm info@4d-dance.co.uk; Zumba 7-8pm, contact Jo Kinser jo@jjkdancin.com; BarreConcept (until 5 April then a break for maternity) 6.30-7.30pm and 7.30-8.30pm (studio), contact workout140@outlook.com; **Community Navigators** 2-3pm in the Coffee shop every other Monday: www.care-network.org.uk

TUESDAY

Yoga 10-11.30am denise@sibleymooreyoga.co.uk; Pilates Entry (for beginners) 10.15-11.15 (studio); Pilates Plus (intermediate) 11.30-12.30 (studio); Teen Pilates (may re-start if sufficient interest) 3.20-4.05 (studio): all Pilates classes are pay as you go, Miranda de Vries miranda@mi-time.eu
Discussion group fortnightly 7.30-9pm (coffee shop) details from cottenham.discussiongroup@gmail.com; Firststeps for adults 8.15-9.15pm julia@jcfit.co.uk

WEDNESDAY

Little Humbugs (singing and music for babies and toddlers) 10.30-11.30am, £2.50 littlehumbugs@gmail.com; BarreConcept (until 5 April then a break for maternity) 7-8 and 8-9pm (studio), contact workout140@outlook.com;
Whirl and Twirl 7.30-9.30pm suzanne.baldry@hotmail.co.uk
CCC Knitting group in coffee shop from 10 am; just come along and enjoy helping others; Photography club 1st Wed of month at 7pm in coffee shop Photoclub@virginmedia.com

THURSDAY

Ready Steady Play (Early Years) 10-11am MLam@hison.cambs.sch.uk; Adult ballet (term time in studio) 10-11am and 11-12 reserve a place community@cvcweb.net;

NEW Zumba 6-7pm, contact Jo Kinser jo@jjkdancin.com; Pilates for strength (studio) 6.45-7.45pm; Mixed Ability Pilates Explore 7.45-8.45pm (studio). All Pilates/Stretchercise queries to miranda@mi-time.eu; From 20th April Pregnancy yoga, 7-30-9pm szramowski.lisa@gmail.com

Cambs Hearing Help 2-4pm every 2nd Thursday of month. www.cambridgeshirehearinghelp.org.uk
Slimming World (coffee shop) 7-9pm v.mcauleyccles@gmail.com

FRIDAY

Yoga (studio) short terms only 10-11.30am, wiltrud.jackson@yahoo.co.uk; Mixed Ability Pilates Explore 10-11am; FlexAware (studio) 11.35am-12.35pm; All Pilates/FlexAware queries to miranda@mi-time.eu;

SATURDAY

NEW 6 May 10 to 1.30 Whirl and Twirl (Waltz, Rumba, Jive, Cha Cha etc.). Come and give it a try: contact Irene 07876 458522

NEW (if sufficient support) Dance and movement class for parents and children 11-12, contact k.gilgenast@yahoo.com or see <https://www.facebook.com/events/602443816611099>

4th dimension Dance classes 2pm and 3pm, info@4d-dance.co.uk

SATURDAY AND SUNDAY

For Colour Awareness workshops, Defibrillator and First Aid training, bookings miranda@mi-time.eu; Dads Play 10.30-11.30 (2nd Saturday of month); Arts Night in coffee shop, 7.30-9.30pm (2nd and 4th Sundays); The Roost (in coffee shop and main hall 3rd Sunday) 3-4.30pm; Community Cinema usually 1st Sunday of the month 7.30pm and sometimes, for families, 2.30pm. Information from website: www.revcoffe.net or <https://www.facebook.com/CottenhamCommunityCinema> or email simon.oliver@cantab.net

NEW COMMUNITY ACTIVITY?

Do you have an idea for a community activity that needs access to a room or hall but can't get off the ground because of uncertainty over income? CCC have space available a lot of the time and while we charge for using these facilities, we encourage community activities. Find out more - Mike Smith on smithmichaelstanley@hotmail.com or 01954 251915

Room Hire Three rooms (main hall, studio, coffee shop) for new activities or parties. Full food catering and/or a bar can be provided. The hall is also great to use for training or meetings. Full entertainment licence etc held. See the website www.cottenhamcc.org or email smithmichaelstanley@hotmail.com

COFFEE SHOP

Come in and enjoy a fantastic scone, cake or lunch.

Opening times: 10am-4.30pm Monday; 10am-2pm Tuesday to Saturday (except bank holidays, Christmas and late August). The coffee shop will close for food and drinks for **the Easter break at 2pm on Thursday 13 April 2017 and Re-open at 10am on Tuesday 18 April 2017.**

Volunteers wanted. Become part of the team at the coffee shop, weekly or less regular volunteers welcomed. For more information contact manager@cottenhamcc.org or phone 01954 202109 during opening hours. Become a member of CCC and help ensure that this popular community centre continues to be a major focus of Fen Edge life or consider becoming a trustee. <http://www.cottenhamcc.org/membership/> www.cottenhamcc.org Charity Number 1128604

PEST PROBLEM?

07836 245670
01954 230708



LOCAL, PROFESSIONAL, TRUSTED

Rapid, qualified & safe **pest control** services for local residents, farms, commercial premises, schools, hotels & businesses.

We effectively control **rats, mice, rabbits, ants, fleas, cockroaches, wasps & moles.**

If you are looking for **one off, emergency or long-term** pest management solutions, contact DRE Pest Control.



19 WALLMANS LANE
SWAVESEY
CAMBRIDGE
CB24 4QY



www.drepestcontrol.co.uk



Willingham Post Office

15 High Street, Willingham CB24 5ES

☎ 01954 260331

Mon-Fri 08.30-18.00 Sat 08.30-15.30

- All mail services, including special delivery
- Travel - Currency, Money Cards and Insurance
- Moneygram
- Post Office Gift Cards for most occasions
- Passport Photographs
- Passport Check and Send Service
- Vehicle Tax
- Financial Products - Insurance, ISA, Growth Bonds, Credit Cards and much more
- Broad Band and Phone Packages, Phone Top-Ups
- Bill payments
- Document Certification Service
- Free Cash withdrawals for most major Banks as well as Cash & Cheque Deposits
- Photocopying and Laminating Service
- Great range of Greeting Cards, Stationery and Pack & Post Items

ADRIAN J. READ *upholstery*

Antique and modern furniture,
loose covers, sundries.
Free estimates, home choose fabrics.



Unit 1, Convent Drive, Denny End
Industrial Estate, Waterbeach
Cambridge CB5 9QT
Telephone: 01223 860800

COTTENHAM DIRECTORY

Girlguiding

Dani Wykes.....01954 250324
Deanna Raven.....01954 250388

Catholic Church

Fr. Patrick Cleary.....01223 704640

Community Beat Office, Police..... 101

Cottenham All Saints Church01954 200035

Cottenham Baptist Church

Church Office.....01954 252378

Cottenham Bowls Club

Dave Parrack.....01954 230732

Cottenham Brass Band

Diana Braverman.....01223 881644

Cottenham Care Cars

Gerry Brett.....01954 251929

Cottenham Community Centre...01954 202109

Cottenham Cricket Club

Dave Partridge.....01954 203210

Cottenham Day Centre

Mrs M Collins01954 200873

Cottenham District Nurse .. 01223 726469 opt 2

Cottenham & District Ploughing Soc

Robert Clarke.....01954 250443

Cottenham Gardeners Club

Aubrey Bould.....01954 250119

Cottenham Library 0345 045 5225

Cottenham Newsletter

Adrian Ient.....01954 775004

Cottenham & Rampton R.B.L

Ann Scott.....01954 251468

Cottenham Salvation Army

Captain Graham Barratt.....01954 252419

Cottenham Theatre Workshop

Nikki Kerss.....01223 236842

Cottenham Toy Library

.....info@cottenhamtoylibrary.co.uk

Cottenham Village Society

Glynis Pilbeam.....01954 251544

Cottenham Village College

Community Office.....01954 288751

Cottenham Women's Institute

Jill Ballard01954 250605

Mobile Warden Service01954 200080

Renegades Rugby Club

Eddie Murphy.....01954 251700



We'll make your oven shine

- Independent, local service
- Realistic pricing with NO VAT charge
- Discounts for regular customers
- No mess
- Only non-toxic, non-caustic products
- Child and Pet friendly

Call 01354 462619

www.cookercare.co.uk

Little Oak

Wood Turning

Little Oak
66 Station Road
Willingham
Cambridge
CB24 5HG



Wood Turning Studio

Using 20 years wood turning experience we have created a collection of unique items now available in a gallery in Willingham

UNUSUAL GIFTS !

From functional to artistic, there is a wide range to choose from
As each is hand crafted, products are unique and
you will find an ever changing display

Open every Mon, Wed, Fri 1 - 6 pm

Happy to open the studio at other times inc. evening & weekends
Please contact Michael or Eileen to arrange



Member of
Cambridge Open Studios



info@littleoak.org.uk

www.littleoak.org.uk

01954 261773

Happy 14th Birthday

April 8th, 10am - 3pm

@195 High Street, Cottenham, Cambridge, CB24 8RX

We're having
a Party!

Goodie bags!!
Fizz & nibbles.
Don't miss it!!

Like our
Facebook to
receive great offers

You're invited
to join the
celebration



Come along
to our
Birthday
Party

Come along, bring your friends and help celebrate another successful year @ Classic Beauty!

* SEE THE 'CLASSIC BEAUTY OF COTTENHAM' FACEBOOK PAGE FOR GIVEAWAYS AND COMPETITIONS *



Loft & timber framed specialist

Your friendly reliable local city & guilds qualified builder.
 Small building works a speciality, look no further for free quotations and advice.
 We go that extra mile

- Garage conversions • Renovations • Loft conversions •
- Flooring / tiling • Garden rooms • Windows / doors
- Extensions • Kitchens / bathrooms

07766 811544 01954 252793
kidmanbuild@gmail.com

Find us on 

IT'S ROAD RUN TIME AGAIN

YESTERYEAR 23rd April

For those of you new to this happening, this road run is for vehicles, not joggers! We have had more than 300 vehicles, motorbikes, cars, commercials and tractors on all the previous runs (see cover of this issue, picture supplied by Cambridge News). The vehicles are classic or vintage and to join in just contact vivien.lampard@ntlworld.com for an entry form or preferably download one from the website www.yesteryearroadrun.co.uk Because of ongoing location difficulties vehicles over 3 tons can no longer join in and all vehicles have to be pre-registered. You cannot enter on the day.

The Yesteryear Road Run sets off from Cottenham Village Green at 10am, and visits Rampton, Willingham, Over, Swavesey, Longstanton, Oakington and Histon. The route will be signposted and may differ from last year. Because the procession is too big to park safely in many of the villages the committee has agreed with the relevant parish councils to only stop at Rampton, Willingham and Histon. No midway lunch stop and the vehicles will return to Cottenham Green for a hog roast, prize giving and entertainment. In the past three years we have raised a great deal of money for charity and we hope to do the same this year for the Arthur Rank Hospice Charity. This will be the fourth year the current committee has organised the event and we would like to have more people from the village to join us, to lighten the load and bring new ideas and experience, to our fundraising efforts.

If you feel you could help – on the committee, with publicity, marshalling the route in any of the participating villages, putting up gazebos, organizing the craft stalls, car parking duty in the morning or at lunchtime – email vivien.lampard@ntlworld.com

COTTENHAM 7K FUN RUN

6th May

This annual event, organised by Martyn Leeks on behalf of FECA, has both a senior and junior run. Register online at www.fenedge.co.uk or on the day at Cottenham Village College from 9am. Age categories and cost of entry are: Primary girl and

boy (£3); Village College girl and boy (£4); Adult male and female (£6); Veterans (45+) male and female (£6).

The Junior Run takes place around the CVC playing fields, a distance of about a mile, and all competitors must be accompanied by an adult. It sets off at 10am (and all who take part receive a medal at the end). The 7k race starts at 10.45am, from the playing fields, and takes a well-marshalled route through and around the village. Full details on Twitter @CottenhamFunRun and Facebook Cottenham 7K Run.

For those who are watching and waiting, there will be a market on site: contact Mike Smith on smithmichaelstanley@hotmail.com to book a stall. It's free for FECA members.

Once again, we are indebted to Malary Limited for their ever-generous support and sponsorship. All proceeds, after costs, will be donated to Twinkle Star Children's Trust whose primary aims are to support local children's projects and enrich the lives and educational experiences of children from disadvantaged and challenging backgrounds.

WINGS FOR LIFE WORLD RUN

7th May

An international event which aims to raise money for research into spinal cord injuries starts at Parker's Piece in Cambridge at midday and follows a marshalled course through many villages. There will be rolling road closures along the route: Girton, Oakington, Westwick, Cottenham (closed 12-2pm, Wilburton, Haddenham, Earith, Sutton, Somersham, Pidley, Woodhurst, Earith, Willingham (closed 4.35-5.45pm), Over then Cambridge (closed around Parker's Piece 7am-6pm).

The charity behind the event inspires thousands of people in 35 places around the world to all start at the same time and run for as long as they can. It's open to all, from beginners to running elite and wheelchair users (each setting his or her own goal) and every entrance fee (£40) goes to this vital research.

There will be maps on public noticeboards in all the villages so you can find out what roads will be closed and when to watch the race go by!

SUMMIT



LANDSCAPES

PAVING

DRIVEWAYS

BRICKWORK

CARPENTRY

GROUNDWORKS



www.landscapingpaving.co.uk

PHONE: 0 1 2 2 3 - 9 2 9 3 9 4

Murray Heating Services

Commercial & Domestic



- ❖ **Boiler Servicing** from £55.00
- ❖ Natural Gas & LPG Servicing
- ❖ Gas Appliance & Heating System Fault Diagnosis & Repairs
- ❖ Boiler & Heating System Upgrades
- ❖ Compliance Checks & Landlords Certificates
- ❖ Catering & Laundry Equipment Maintenance
- ❖ Unvented Hot Water Cylinder Maintenance
- ❖ Plumbing Repairs
- ❖ Power Flushing of Heating System
- ❖ *Out of Hours & Weekend Appointments*



Contact us for a quote today...

Tel: 07948 548 492 / 01954 715 814

email: murrayheatserv@icloud.com

Find us on checkatrade.com - Membership: 346442

LOCAL HEROES

MEET GERRY BRETT from Cottenham who coordinates the busiest social car service in Cambridgeshire villages.

Founded in 1994 and supported by Cambridgeshire County Council, Cottenham Carecar is staffed entirely by volunteers who last year travelled nearly 41,000 miles transporting villagers of all ages who have difficulty in using public transport to get around for both medical appointments and social trips.

The scheme covers Cottenham and includes Oakington and Westwick, until Northstowe arranges its own service. The most frequently requested medical trips are to Addenbrooke's, an increase of 40% in the last year following alterations to the bus service (which mean changing buses in Cambridge). There were almost 300 trips to doctors' surgeries which at least would have reduced demand on GPs to make house calls. Every weekday as well the scheme takes people to the Over Day Centre which specialises in dementia cases, thus giving their carers much needed respite.

The popularity of the scheme, says Gerry, means that it always needs more volunteers: drivers, escorts (who go with people who have no one to look after them when attending long sessions at the hospital, or on shopping trips) and Deputy Coordinators (who may or may not be drivers and help out covering holidays, sickness etc). Deputy Coordinators might suit those who are housebound, suggests Gerry. It just needs someone with admin experience to operate a very simple system. Drivers are fully reimbursed

for all expenses incurred (from the contributions passengers make for their trips and, at present, from the County Council subsidy). Drivers are never committed to any particular day or time – they are given a choice of jobs on a weekly basis. New clients who wish to use the service should contact Gerry and he will assess whether they meet the criteria. He would welcome calls too from those with a few hours to spare to be volunteers of this much appreciated scheme. Gerry Brett: 01954 251929

MEET CHRISTINE WARD, Cottenham Parish Councillor with a keen interest in improving the village where she has lived for over 25 years with her husband Simon. She is active in Sustainable Cottenham (which aims to save energy and improve housing through better insulation) and encourages a group of volunteers several times a year to join her in litter-picking. At a recent parish council meeting the efforts of her team were noted particularly in relation to clearing the cycle path between Cottenham and Histon which had become overgrown. Sprucing up the village may be the good (and successful) intention, but the rumour is that it is the tea and cakes that follow these litter picks that lure the volunteers. Check www.cottenhampc.org.uk for future clean-up dates.

ATTENTION ALL FEN EDGE VILLAGERS

Who would you nominate as a local hero, someone who really does something to make life easier or better for your community. Send details to editor@fenedge.co.uk

Van Rental
www.stuardarlingvans.co.uk

Cambridge
01223 441551

Self drive daily van rental - Discounts for long term rental
Easy to reach out of town location

Stuart Darling Limited, 3 Greenside, Waterbeach, Cambridge, CB25 9HW.



POLARGLAZE LTD

Highest Quality Windows, Doors & Conservatories

*Contact our sales team to view our PVCu, aluminium
& timber product range*

Leading local independent company since 1974

SHOWROOM AND FACTORY

Unit D, Denmark Rd, Cottenham, Cambridge, CB24 8TX
Entrance opp. Chequers Pub

Tel: 01954 251290



24hr answerphone | Fax 01954 252900
sales@polarglaze-ltd.co.uk www.polarglaze-ltd.co.uk



LEEWAY BUILDING SERVICES LTD
Property Extensions, Renovations,
Conversions and Alterations

All aspects of building work undertaken;
specialising in extensions, conversions,
alterations, garage and loft conversions,
underground drainage work, heating
systems, re-wires, general plastering,
replacement windows, soffits, fascias
and guttering.

North View, 43 High Street,
Rampton, Cambridge CB24 8QE

Telephone: 01954 251164
Mobile: 07766 553484



info@leewaybuildingservices.co.uk
www.leewaybuildingservices.co.uk

THE GARDEN BOYS

Fencing specialists

Paving, Patios,

Decking, Hedge Work,

Turfing, Clearances.

For a free quote no obligation

Contact: John (old boy)

Ian (young boy)

01954 200251 or 07599 101924

Gardenboys@hotmail.co.uk

In your garden: TIME TO REVIEW YOUR GREEN SWARD

Laying down the lawn can be very rewarding, says Ken Ellis

By the time you read this, things will be growing in the garden – including the lawn. And this is the time when we should be giving it a good start. You need to take stock. Is there a moss problem (very common after many cloudy days)? Does the grass look matted? Are there damp patches, with water not draining? The answer is to scarify which just means aerating the soil, loosening the top layer so the grass roots are able to spread. When I scarify a couple of large lawns I look after I hire a big machine. You could also hire or borrow one from a friend or get stuck in with a sturdy metal-toothed rake. You'll be amazed at the amount of material ('thatch') that you rake off, but don't panic. The grass will respond quite quickly.

BUT MOSS HAS TO BE DEALT WITH

FIRST. Get a weed and feed mixture. If you've damp problems, get one that includes a moss killer. You can buy lawn feed applicators – and I would advise it. This helps you spread the feed at the correct rate, according to the instructions, and you should see your lawn begin to grow, and the weeds diminish. Next...

CHECK THE EDGES. A man I know maintains that if you have tidy edges to your lawn, nobody notices imperfections in your garden. He used to trim his with an old tenon saw! My armoury consists of long handled edging shears, a flat version of the same, a small pair of hand shears and an edger that is a wheel with a sharp protruding edge wheel for hard edges. Where it may be difficult to maintain a sharp edge, such as a pond, you could go for the 'soft' approach and let the grass merge into the water, or create a hard edge. On my own lawn (which has a miniature railway running alongside it), I put in a line of edging pavers to keep the lawn off the track, and to make the edge easier to maintain.

IF YOU ARE WANTING TO ESTABLISH

A LAWN, the cheapest way is seed. For general use, get a fairly sturdy mix containing ryegrass. It'll

be robust and resists wear. Sow generously, and cover with netting until it's germinated. **Don't be fooled by phrases like 'bird repellent seed';** it just means that they take longer to eat it. Water the seed, and keep the emerging grass moist for the summer. You won't be mowing it until next year. Grass needs to develop its root system – and if you look after it now, it will repay you.

THE LOWDOWN ON TURF. Get the best that you can afford from a reputable grower. When it arrives, unroll it immediately. Grass hates the dark and turns yellow at the thought of it. Lay it out somewhere out of the way, water it and then lay it. There is plenty of advice about how to do this out there, so we'll fast forward to aftercare. Remember that the roots have to grow into the soil, which will take a season, so you must not let it dry out. If it shrinks, scatter some loam into the crack, soil from a molehill is great for this, and gently pat it down. Don't feed the turf. It may have been given a boost before you get it. Give it a feed in the autumn to help it develop its roots over winter and all should be well.

ARE THERE TRICKS TO MOWING? Just one rule: don't overdo it. Chopping the tops off leaves is a bit of a disaster for the growing plants (though they will tolerate it). If you shave your lawn, it will dry out very quickly in dry spells and it won't thrive as it's putting all its energy into regenerating top growth. My petrol rotary mower with a roller on the back works well on its number three setting. I sometimes go slightly lower (for a manicured effect). At the start of the season, I mow on a higher setting to stimulate the grass, gradually lowering the blade over four or five weeks. I do the opposite towards the end of September, to leave longer grass which will inhibit moss. And when autumn comes, I diligently remove leaves from the grass. How often should you mow? About once a week in high season but depends how keen you are. Twice is nice, as the clippings box won't be so heavy, and it gives you an excuse to walk up and down your garden.

Continued on P23



K & S Services



- All aspects of Carpentry & Joinery
- Kitchen Fitting
- Bathroom Refits
- Wall & Floor Tiling
- Laminate & Wood Flooring
- Internal / External Painting & Decorating
- Fencing
- Heating Systems

Free Quotations - Quality Work Guaranteed

Kevinwhitby1967@gmail.com

Tel: 01954 200969

Mob: 07549 983817



clearglass
bespoke glassworks

01223 211888

sales@clearglass.org.uk

www.clearglass.org.uk

FOR ALL YOUR GLASS AND GLAZING NEEDS

- Glass splashbacks and wall coverings
 - Shower screens and enclosures
 - Balustrades and balconies
 - U - V bonding
 - Mirrors
- Traditional leaded and stained glass
- Replacement of misty double glazed units
 - Cut glass and greenhouse glass
 - Glass shelves made to measure
 - Safety glass

FOR MORE INFORMATION OR A **FREE QUOTATION**
CONTACT US OR VISIT OUR SHOWROOM*

Unit M, Broad Lane Industrial Estate,
Cottenham, Cambridge CB24 8SW

*For opening hours see our website

Pregnancy Fitness Classes

- Unsure what exercise is safe for you and baby?
- Keen to keep common pregnancy aches and pains at bay?
- Feeling unsure about how best to prepare for birth, labour and life with a little one?
- Scared about putting on too much weight?
- Need help staying relaxed for the big event?
- Want to maintain control of your pelvic floor?



lovefit
training

For further information see
www.lovefittraining.com

Classes in Milton, Tuesdays 7pm



In your garden: continued from p21

WHAT ABOUT BOUGHT-IN CARE?

Sometimes when you have problems with your lawns – extensive moss, pernicious weeds, grass that isn't thriving – a specialist can be useful. They are not an expensive luxury any more than a mechanic is

for your car. We have seen them achieve excellent results over a season, transforming sad, weedy patches. Most will visit without obligation and advise you about what you need to have done. It could be a way to treat yourself!

CALLING ALL GARDEN LOVERS. I belong to Cottenham Gardening Club. We meet monthly in Franklin Gardens Community Centre on a Friday, from 7.30pm. If you're in Cottenham and want to come, contact Aubrey Bould on 01954 250119 for details of our next meeting. If you're in another part of the Fen Edge area, look up your local club. You'll be able to chat to your heart's content about all aspects of gardening and receive lots of encouragement. You may well find that someone is not just willing to share their expertise with you, but maybe a lawn spreader as well! See you there, Ken

Our garden at 12 Chapel Street, Ely, is open twice this year. Once for the NGS as part of the Ely Open Gardens: Sunday 11th of June from 2pm to 6pm, and again on Sunday 23rd of July for the Red Cross, times to be confirmed on our website: www.simplygardeningofely.co.uk. Details of our garden and others in Ely can be found in the NGS Yellow Book. We shall be selling plants, and, yes, the train will be trundling happily round the garden!"



Crossways Garage
Oakington

Tel No (01223) 233003

*Service, Repairs & Tyre Fitting to All Makes of
Vehicles and Light Commercial*

Approved MOT Testing Station



B R Unwin Brickwork & Building Contractors Ltd.



Specialists in extensions, renovations and conversions

Phone: 01954 201 556 Mobile: 07759 621 390

bruce@brunwinbrickwork.com www.brunwinbrickwork.com



Vintage
travel
ESTABLISHED
1990

Your Local
Travel
Company

**HANDPICKED
ESCAPES**

A selection of beautiful individual villas
& houses with pools in tranquil settings
& areas of traditional local culture.

Call for a brochure or to speak to one
of our specialists **01954 261431**
or visit our website
www.vintagetravel.co.uk

Traveller
Member of the
Traveller Group
2014

GREECE • SPAIN • LANZAROTE •
BALEARICS • PORTUGAL • TURKEY •
FRANCE • ITALY • CROATIA

ABTA
ABTA No 07043



Heaven Scent

43 Telegraph Street, Cottenham, CB24 8QU

Sports Massage
Swedish Massage
Facials, Make-up
Electrolysis, Waxing
Manicures and Pedicures
Lash and Brow Tints
Lash Perm, Ear Piercing
Gift Vouchers

Telephone: 01954 200130

Mobile: 07925169697

Email: helenehautrey@hotmail.com

Website: www.heavenscentuk.com

Helene Gautrey
BTEC National Diploma
in Beauty Therapy (2002)
VTCT Diploma in Sports Massage
BABTAC



ELECTIONS on 4th MAY

The voting will be twofold: for the new Mayor of the combined authority of Cambridgeshire & Peterborough, and for seats in the now reduced-in-size county council.

Candidates for the new post of Mayor (in alphabetical order) are: Paul Bullen (UKIP, Cambridgeshire County councillor), Rod Cantrill (LibDems, Cambridge City councillor), Peter Dawe (Independent, entrepreneur), Stephen Goldspink (English Democrat, former Peterborough City councillor), Julie Howell (Greens, parish councillor and campaigner), James Palmer (Conservative, leader of East Cambridgeshire District Council) and Kevin Price (Labour, deputy leader Cambridge City council).

The new Cambridgeshire County Council will have 61 councillors (down from 69) in 51 single-member electoral divisions and 5 two-member divisions. In the Fen Edge part of South Cambs, one councillor is to be elected for each ward created by the Local Government Boundary

Commission. Previously Cottenham had two CCC members.

In this election (nominations close after we go to press) known candidates are: David Jenkins (LibDem, 12 years at Cottenham) at Histon and Impington (which used to be combined with Cottenham), and Independent Mike Mason (4 years representing Cottenham) for the new ward of Cottenham and Willingham plus Rampton. LibDem Neil Gough, Cottenham resident, is standing for this ward too, as is Tim Wotherspoon, Conservative district councillor for Cottenham.

Maurice Leeke (LibDem, 12 years at Waterbeach) is retiring. Anna Bradnam, LibDem district councillor for Milton, will stand for the new Waterbeach division (includes Horningsea, Landbeach and Milton).

Final nominations for the elections must be in by 4pm on 4th April. The last date to register as a voter is 13th April.

THE ALTERNATIVE RA SUMMER EXHIBITION

Rampton Village Hall, CB24 8QA



July Sat 15, 10-5pm, Sun 16, 10-4pm

all work for sale

refreshments, free entry, parking

A.R.Aspinall & Sons Ltd

Tel: 01954 234966 Fax: 01954 234967
Unit 11 Norman Way Ind Est, Over, Cambs, CB24 5QE.

www.araspinall.co.uk

WE STOCK A FANTASTIC RANGE
OF NATURAL PAVING
PRODUCTS COME AND VISIT
OUR NEW DISPLAY AREA.

Bricks • Blocks • Lintels • Cement • Sand
• Gravel • Hardcore • Timber • Fixings
• Footwear • Decorating Supplies • Paving Slabs

Opening times: Mon to Fri 7.30am – 5pm



WE OFFER A FREE LOCAL DELIVERY SERVICE!

Colin Howard

Decorating
Tiling
Curtain poles
Blinds

Shelving
Picture hanging
Flat pack assembly

*For a smart professional
service with attention to detail
please call for a free quote*

07817 383972

colinmhoward@hotmail.com



Domestic, Commercial, Industrial & Agricultural

Electrical installations, repairs, Inspection & Testing.

*For all your electrical requirements contact us for a **free** no obligation quotation.*

Office: **01223 430 430**

Mobile: **07836 780 620**

Email: Enquiries@cambridge-electrical.co.uk

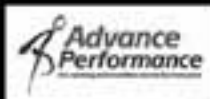
Website: www.cambridge-electrical.co.uk

THE FOURTH

FLAMING JUNE

Info/Register at - WWW.FLAMINGJUNEHALF.CO.UK

Sunday
4th June



HALF MARATHON

Plus NEW Quarter Marathon

UNIQUE RURAL MULTI TERRAIN COURSE, HISTON, CAMBS.

Run the "Bonfire Burn's" - Bigger Brother 1 -

Event organised by Friends of Histon & Impington Rec. & HI Runners

TuckerGardner

Cottenham Summer School

24th – 28th July

2017



For more information or a brochure, please contact us on
 Tel: 01954 288751 • Email: community@cvcweb.net
 or visit <http://community.cvcweb.net>

Textiles

Weaving on a Table Loom

Anna Crutchley

Quilt in a Week

Mary McIntosh

Stitch & Surface Design

Pauline Verrinder

Spectacular Screen Printing

Ricki Outis

Get Hooked on Crochet

Emma Wilkinson

Get Crafty with Crochet

Emma Wilkinson

Drawing & Painting

Creative Drawing

Sheila Bryan

Illustrating the Natural World

Georita Harriott

Landscapes in Watercolour

David Hyde

Calligraphy – The Uncial Script

Liz Barrow

Music

Guitar Roots and Beyond

Brooks Williams

Walking

Footpaths in Cambridgeshire

David Thomas

Crafts

Pattern Cutting – Trousers

Sally Tilley

Lino Printing

Clive Riggs

Willow Animal Sculpture

Sue Kirk

Upholstery

Cindy Mason

Floral Design

Julie Woods

Learn to Love Your Overlocker

Pamela Tasker

Stretch Your Sewing Skills

Pamela Tasker

Books in a Box

Edel Hopkin

Coptic Binding

Edel Hopkin

Dichroic Glass Jewellery

Fiona Gooch

Paper Flowers

Lynda Suffell

Coloured Glass Fusing

Sarah Hunt

General

Creative Digital Photography

Denis Pemberton

The Tao of Everyday Life

Alison Warlow

 Find us on Facebook

(Adult Learning at Cottenham Village College)

ADULT LEARNING & LEISURE

COTTENHAM VILLAGE COLLEGE
HIGH STREET, COTTENHAM, CAMBRIDGE, CB24 8UA

ADULT LEARNING OFFICE

SCHOOL RECEPTION

SPORTS CENTRE

COTTENHAM PRIMARY SCHOOL

WATERBEACH PRIMARY SCHOOL

WILLINGHAM PRIMARY SCHOOL

01954 288751

01954 288944

01954 288760

01954 206227

01223 718988

01954 283030

Village College Headteacher

Centre School Headteacher

Executive Headteacher

Adult & Family Learning Manager

Stuart Lock

Sue Raven

Steve Ellison

Janet Drinkwater

Adult Learning Administration

COTTENHAM VILLAGE COLLEGE

Tracy Thistlethwaite

Debbie Jackman

Jenny Baines

ENROL NOW FOR SUMMER 2017 COURSES

Tel: 01954 288751 Email: community@cvcweb.net

Direct Weblink: <http://community.cvcweb.net>

Facebook Page: Adult Learning at Cottenham Village College

Booking Form – See Page 36

COTTENHAM SUMMER SCHOOL 2017 – Monday 24th July-Friday 28th July

DATES FOR SUMMER 2017

Monday 24th April

Monday 29th May – 2nd June

Classes start

Half-Term Break – **no classes**

NOTE: Please check the dates of your class, as some may run outside of the above dates – no classes on Bank Holidays

The prices quoted are for Adults/Concessionary Rate for those on a means tested Benefit or Pension Credit

PLEASE NOTE: ALL FEES MUST BE PAID BEFORE THE START OF THE COURSE.

Payment can be made by cash, cheque, debit or credit card (please note that for credit card payments there is charge of £2.50)



MONDAY

Adult Ballet Beginners (Cott Comm Centre) - 10 weeks 10.00-11.00am Fee: £60/£45 starts 24th April

Designed for those with little or no ballet training, this is a great class for having fun and toning the whole body.

Adult Ballet Improvers (Cott Comm Centre) - 10 weeks 11.00am-12.00pm Fee: £60/£45 starts 24th April

A good basic knowledge of Ballet is required, students will learn complex steps to a wide variety of music styles.

Adult Ballet Mixed Ability - 10 weeks 7.00-8.30pm Fee: £75/£56 starts 24th April

For those who attended ballet classes as children or have some experience. Learn style, co-ordination and have fun.

Art History: The Renaissance in Europe: the knowledge extends north - 8 weeks 7.00-8.30pm Fee: £60/£45 starts 24th April

A basic introduction to Renaissance artists 1500-1600 to gain an insight into why they were seen to be so important.

Creative with Clay - 10 weeks 7.00-9.00pm Fee: £100 + £20 materials starts 24th April

Explore, create and express your ideas in the versatile medium of clay. Practise techniques including hand building, throwing, decoration and glaze effects using a variety of stoneware clays, slips and glazes.

Dressmaking - 10 weeks 12.30-2.30pm Fee: £98/£75 starts 24th April

Learn how to make basic pattern alterations, cut out, assemble and fit garments. Be guided through the purchase of fabrics & patterns, basic dressmaking techniques and make samples to practise your new skills. Suitable for all abilities.

Fitness for Mature Movers - 5 weeks 10.00-11.00am Fee: £20 TILLAGE HALL, WATERBEACH starts 24th April

Gently stretch and tone in a friendly class, all movements to your own ability which will improve your balance and agility. You really are never too old to start toning those muscles!

Italian for Beginners NEW - 10 weeks 7.00-9.00pm Fee: £98/£75 starts 8th May - FREE TASTER 24th April

For complete beginners and those wishing to revive their Italian. A fun and lively class to learn this beautiful language – bellissimo!

Just Ballroom Beginners NEW - 8 weeks 6.15-7.15pm Fee: £40/£30 starts 8th May

For total beginners who want to explore ballroom dancing with a very experienced tutor who will guide you through a series of steps and dances.

Just Jive Improvers - 8 weeks 7.15-8.15pm Fee: £40/£30 starts 8th May

Develop your iconic jive moves and routines further with more adventurous kicks, jumps and swings. For those with at least 10 weeks Jive experience.

Just Jive Beginners NEW - 8 weeks 8.15-9.15pm Fee: £40/£30 starts 8th May

An energetic dance class with iconic jive moves - kicks, jumps and swings - with our experienced Tutor. Singles and partners welcome.

Learn to Love Your Overlocker - 4 weeks 7.00-9.00pm Fee: £40/£30 starts 24th April

Unsure how to use your Overlocker? Find threading a nightmare and can never get the tensions right? All will become clear to achieve a highly professional finish and make simple projects. Materials extra.

Pilates for Everyone - PLOUGHMAN'S HALL, WILLINGHAM - 10 weeks Fee: £55/£42 11.30am-12.30pm OR 12.30-1.30pm starts 24th April

Use controlled mat-based exercises to condition the whole body, improve your posture, reduce stress, and help with 'bad backs'. All abilities welcome.

Pilates for Everyone - 10 weeks Fee: £55/£42 7.00-8.00pm starts 24th April

Use controlled mat-based exercises to condition the whole body, improve your posture, reduce stress, and help with 'bad backs'. All abilities welcome.

Pilates for Runners - 5 weeks 8.15-9.00pm Fee: £25 starts 24th April

Specific to runners - improve form and technique by strengthening core muscles, improve alignment and increase awareness & focus. No previous experience needed.

Thai Cooking for Beginners NEW – 5 weeks

6.30-9.00pm Fee: £65/£50 starts 8th May

An exciting new class offering a chance to learn how to cook authentic Thai food eg. contemporary, Fusion, street food and noodles,

Watercolour Painting - 10 weeks 7.00-9.00pm

Fee: £98/£75 starts 24th April

Create paintings from your own observations applying the 'rules' of design and composition with plenty of new colour mixes, tips and guidance. Materials extra.

Watercolour Painting for Improvers - 10 weeks

10.00am-12noon Fee: £98/£75 starts 24th April

Develop your traditional landscape painting with lots of new colour mixes, tips and 'tricks of the trade'. Materials extra.

Yoga for Beginners - 10 weeks 6.30-8.00pm

Fee: £73/£55 starts 24th April

Suitable for all ages and abilities including those who want to go back to basics. Increase your flexibility and work with your breath to relax. Not suitable for ladies in the first three months of pregnancy.

TUESDAY

Dichroic Glass Jewellery NEW– 1 evening

9th May 6.00pm-9.00pm Fee: £15 + materials £15

Use your design flair to make 2 pendants and 2 pairs of earrings from a mixture of clear, coloured and dichroic glass which will look amazing after firing.

Fitness for Mature Movers SALVATION ARMY

HALL, WILLINGHAM - 5 weeks 11.30am-12.30pm

Fee: £20 starts 25th April

Gently stretch and tone in a friendly class, all movements to your own ability which will improve your balance and agility. You really are never too old to start toning those muscles!

Revive Your French – 10 weeks 7.00-9.00pm

Fee: £98/£75 starts 25th April

Already have some basic knowledge/experience of French? Acquire a greater basic knowledge of vocabulary and grammar to gain confidence to develop your speaking, listening, reading and writing skills further.

Indian Street Food NEW - 5 weeks

7.00-9.00pm Fee: £50/£40 starts 6th June

Known as 'CHAAT' in India, Street Food is rich in colour and flavour - broaden your knowledge and experience of spices, at each session we will prepare 2 dishes. Ingredients extra.

T'ai Chi for Beginners plus - 10 weeks

7.00-8.00pm Fee: £50/£40 starts 25th April

For those with less than 1 year's experience, total beginners welcome to try.

T'ai Chi for Improvers – 10 weeks 8.00-9.15pm

Fee: £61/£46 starts 25th April

For those with at least one year's experience.

Yoga for Improvers - 10 weeks 7.00–8.30pm

Fee: £73/£55 starts 25th April

For those with at least one year's experience. Increase your flexibility, improve your asana practice and develop your understanding of yoga. Not suitable for ladies in the first three months of pregnancy.

Latin for Beginners NEW – 8 weeks 7.00-8.30pm

Fee: £60/£45 starts 2nd May

For those who have no knowledge of Classical Latin or who want to refresh basic grammar and vocabulary. Develop your knowledge of the language, culture and history of Ancient Rome.

WEA Cottenham, British Legion Hall, 121 High Street, Cottenham CB24 8SD

Course: The Self Portrait

Tutor: Fiona Lucraft

A Rembrandt self-portrait, Virginia Woolf's diary, Sir John Soane's house, and Wordsworth's Prelude are varieties of the maker's portrait. In this course we will study the many faces of the self-portrait and what they mean to us.

Start: 18th April 2017 for 6 sessions

Fee: £45.50

Time: 10.30am – 12.30pm

Contact: Liz Milway on 01954 250039

WEDNESDAY

Adult Tap Dancing Improvers - 10 weeks

7.00-8.00pm Fee: £50/£38 starts 26th April

For those who have previously completed a year of Adult Beginners Tap, or who have previous experience of Tap to Grade 3. This class is designed to teach rhythm, co-ordination and to refine technique.

Adult Tap Dancing Intermediate – 10 weeks

8.00-9.00pm Fee: £50/£38 starts 26th April

For those who have previously completed a year of Adult Improvers Tap, or who have previous experience of Tap to Grade 6. This class is designed to develop higher levels of rhythm, co-ordination and technique.

Carpentry, Learn Design & Make - 10 weeks

7.00-9.00pm Fee: £98/£75 starts 26th April

Using our top quality, extensively equipped workshop you will design & make a woodwork project of your choice. Suitable for the complete beginner or the expert. Bring your own woodwork materials.

Creative with Clay – 10 weeks 7.00-9.00pm

Fee: £100 + £20 materials starts 26th April

Explore, create and express your ideas in the versatile medium of clay. Practise techniques including hand building, throwing, decoration and glaze effects using a variety of stoneware clays, slips and glazes.

Fitness for Mature Movers – 5 weeks 2.00-3.00pm

Fee: £20 COTTENHAM VILLAGE COLLEGE starts 26th April

Gently stretch and tone in a friendly class, all movements to your own ability which will improve your balance and agility. You really are never too old to start toning those muscles!

Just Talk French (Improvers) – 10 weeks

7.00-9.00pm Fee: £98/£75 starts 26th April

For learners with at least one year's knowledge/experience of French who know the basics and want to develop their skills.

Pilates (Mixed Ability) 10 weeks - 9.15–10.15am

Fee: £60/£45 starts 26th April

A multi-level class for all with a keen interest in improving body mechanics and posture through exploration of the Pilates techniques. Beginners welcome.

Salsa Dance for Beginners – 10 weeks

7.00-8.00pm Fee: £50/£38 starts 26th April

Cuban style Salsa is energetic and addictive, so come along and you'll be hooked! No partner needed.

Salsa Dance for Improvers – 10 weeks

8.00-9.00pm Fee: £50/£38 starts 26th April

Develop your skills and confidence further in Salsa with our experienced Salsa Tutor.

Small Scale Screen Printing – 5 weeks

10.45am-1.30pm Fee: £70/£53 starts 14th June

A colourful, adaptable and amazingly fast technique. Working small can free you up to be very experimental and to try out lots of new ideas. For beginners and those with some experience learn exciting new techniques. Materials extra.

THURSDAY

Adult Ballet Beginners (Cott Comm Centre) -

10 weeks 10.00-11.00am Fee: £60/£45 starts 27th April

Designed for those with little or no ballet training, this is a great class for having fun and toning the whole body.

Adult Ballet Improvers (Cott Comm Centre) -

10 weeks 11.00am-12.00pm Fee: £60/£45 starts 27th April

A good basic knowledge of Ballet is required, students will learn complex steps to a wide variety of music styles.

French Conversation Intermediate -10 weeks

9.30-11.30am Fee: £98/£75 starts 27th April

Course currently full, please contact us for waiting list.

Upholstery NEW Rampton Village Hall - 5 weeks

10.00am-3.30pm Fee: £170/£128 - starts 8th June

Suitable for Beginners to learn techniques and skills in traditional or modern upholstery, intermediates may continue to upholster an existing project. Students provide own furniture. Materials extra.

Upholstery - 10 weeks 10.00am-3.30pm

Fee: £245/£184 - starts 27th April

Course currently full, please contact us for waiting list.

FRIDAY

Upholstery - 10 weeks 10.00am-3.30pm

Fee: £245/£184 - starts 28th April

Course currently full, please contact us for waiting list.

SATURDAY DAY SCHOOLS

Time: 10am–4pm (unless otherwise stated). Fee: £35/£26 unless otherwise stated

Please note all students will need to bring a packed lunch for whole day courses. Materials are extra where stated

SATURDAY 13TH MAY 2017

Lino Printing £45/£36 (materials included)
Willow Weaving Bird Houses & Feeders + materials
Screen Printing + materials
Patchwork Day + materials
Indian Vegetarian Delights + ingredients
Fused Glass Metals & Inclusions – 10am-1pm
£18+materials

SATURDAY 10TH JUNE 2017

Delicious Dough + ingredients 10am-3pm £30/£23
Ceramic Garden Plaque £45/£35 (materials included)
Emergency First Aid at Work £65
iPad workshop for the scared 10am-1pm £18
Learn to Love Your Sewing Machine
T'ai Chi celebrating Summer 10am-1pm £18

BALLET POINTES

BALLET POINTES with our classically (Vaganova) trained Ballet Teacher April Martin

Are you looking for high quality, pure Ballet classes for your children? At Cottenham Village College we offer classes with our highly trained Tutor April and her assistant Tutor Danielle, to give your children the best start in the world of Ballet. April trained with Russian ballerina Nina Hubbard who went on to found the Society of Russian Style Ballet Schools to help preserve this traditional way of training (now known as ARBTA). April has also worked with Kenneth Olumuyiwa Tharp OBE (until recently he was CEO of the Place, London) and Wayne Sleep. Her ex-students have achieved great things at the Royal Ballet, London School of Contemporary Dance, Central School, Northern School of Contemporary Dance and Rambert School of Ballet & Contemporary Dance, to name but a few.

April's passion is Ballet and Dance and she also runs 'Energise' a local dance showcase for all types of dance, attracting groups from across the East Anglia. Her training and experience have taught her to encourage her students to work with their body and not against it. Ballet technique has to be developed slowly, there is no quick fix so her emphasis is on developing the skill to avoid the damage that can be done with youngsters who don't take things at the right pace. This takes time and patience on the part of the student and teacher but the rewards can last a lifetime.

To find out more about Ballet classes contact April Martin tutusrus@ntlworld.com or for contemporary jackstintondance@gmail.com.

BALLET FOR CHILDREN AND YOUNG PEOPLE

Tutor - April Martin (Associate ARBTA & Member BDQT), any enquiries telephone 01954 200533
E-mail a.r.martin@ntlworld.com or tutusrus@ntlworld.com

Children need to be confident to stay without their parent/carer – fees not refundable for absence from a class that is continuing to meet. 12 week term – Starts Wednesday 19th April

	Time	I Term
Cj51 Reception Age	4.00-4.30pm	£36.00
Cj52 School Year 1-2 + older Reception	4.30-5.00pm	£36.00
Cj53 School Years 3, 4, 5, 6	5.00-5.45pm	£54.00
Cj54 School Year 6 upwards	5.45-6.45pm	£72.00

ENROLLING IN THE CLASSES

You may enrol in any of the adult or junior classes by using the booking form in this brochure or over the phone with a debit/credit card. If paying by credit card there is a fee of £2.50 per transaction (no charge for debit card payments). Bring or send your booking form to the College, cheques payable to COTTENHAM VILLAGE COLLEGE. You can also print off a copy of the booking form from our website <http://community.cvcweb.net>

ADULT LEARNING CLASSES:

Enrolling in person: office open weekdays 9am-2.30pm and Monday–Wednesday evenings from 6.30-8.30pm.

Enrolling by phone: call us on 01954 288751

Enrolling by email: community@cvcweb.net with full details of course, name, address and telephone number.

Enrolling by post: enclose a stamped addressed envelope if you would like your receipt returned.

SPORTS CENTRE CLASSES: visit the Sports Centre Reception from 5pm daily and from 9am at weekends or call 01954 288760.

COURSE FEES: must be paid in full at enrolment.

MATERIALS CHARGES: such as text books, ingredients for cookery classes, fabrics etc. - are NOT included in the cost.

CONCESSIONS: are available, but evidence of entitlement is required at enrolment or before (see Booking Form).

CLOSURE OF CLASSES - REFUNDS OF FEES

A full refund will be given when a class is closed due to small numbers. Please note, fees are not refundable for absence from a class that is continuing to meet.

INSURANCE AND LOSSES

Cottenham Village College cannot accept responsibility for accidents to members of clubs and classes other than those covered by the College's Public Liability Insurance, nor for loss of personal property left on the premises or in a car, nor for damage to cars and bicycles - parking is at your own risk.

EQUALITIES STATEMENT

Cambridgeshire County Council operates an Equality of Opportunity Policy. We will ensure that resources and equipment are accessible to all and make reasonable adjustments to ensure that all can access activities. If you have any specific needs which might affect your learning you are entitled to a confidential interview where we can look at the support that you require. We believe that everyone is entitled to learn in an environment that is free from discriminatory behaviour so that we build a community based on mutual trust and respect.

COMMUNITY FACILITIES AT COTTENHAM VILLAGE COLLEGE

Support for people with special needs

If you would like to attend a class but feel that you may need support to enable your participation, please contact the Adult Learning office on 01954 288751.

Transport Difficulties

If you would like to attend a class but have no transport please contact us on 01954 288751.

We may be able to put you in touch with someone who can give you a lift.

Learning Partners

If you are interested in being a learning partner in a class of your choice (you do not pay fees) to enable you to offer help to someone requiring support, please get in touch with us – Tel: 01954 288747.



Cottenham Sports Centre boasts an array of quality sports facilities; open to the public 5pm-10pm Mon – Fri and 9am–5pm at weekends. Tel: 01954 288760 or visit: cottenhamsportscentre.co.uk

- A floodlit artificial turf pitch
- Multi use sports hall (3 badminton courts)
- Gymnasium (smaller hall suitable for martial arts, etc.)

- Four floodlit tennis / netball courts
- Outdoor cricket nets
- Modern changing rooms, with showers and lockers

These excellent facilities are available to clubs, groups and individuals to hire on either a block booking or casual basis.

SPORTS CENTRE COURSES

We run a number of sports courses for adults and children. These courses must be booked in advance.

PLEASE NOTE: ALL FEES MUST BE PAID BEFORE THE START OF THE COURSE

To book a Sports Centre course please contact 01954 288760 from 5pm

CLASSES

Monday:	Boxercise	7-8pm	ABB Attack	8-8:30pm	Gymnasium
Wednesday:	Weight Circuits	6-7pm			Dance Studio
Thursday:	Weight Circuits	7:30-8:30pm	ABB Attack	8:30-9pm	Dance Studio
Saturday:	Circuits	8-9am			Sports Hall
Members Cost:		FREE			
Non Members Per Class:		Hour Class: £5		Half Hour Class: £3	

Cottenham Tennis Club Membership Fees: 1st May 2017 – 1st Jan 2018

Juniors (Under 18)	£20
Adult	£40
Family (based on two parents & two Children)	£75
Plus 1 on Family	£10
Wednesday Club Evening	7.30-9.30pm
Thursday Match Fixtures & Club Courts Available	7.00-9.30pm
Sunday Afternoon Club Courts Available	1.30-5pm
50% Discount on Court Fees at other times	

Professional Coaching (by Over&In) available SUNDAY MORNINGS

Children	4-6 year olds	10am – 10.30am	£21
	7-10 year olds	10am – 11.30am	£42
Juniors	11-15 year olds	11.30am - 12.30pm	£42
Adults		12.30pm - 1.30pm	£48

**TO BOOK A SPORTS CENTRE COURSE/CLASS CALL DIRECT ON 01954 288760
BETWEEN THE TIMES OF 5pm-10pm MONDAY TO FRIDAY OR BETWEEN 9am-5pm WEEKENDS**

BADMINTON CLASSES

Monday
Badminton with Dan Valderas ongoing throughout the year. Contact the Sports Centre to start a Badminton course

Spring Term dates:	20th Feb – 31st March	
Juniors	5:30 - 6:30pm	£35 per 6 week block of lessons
Beginners	6:30 - 7:30pm	£35 per 6 week block of lessons
Intermediate	7:30 - 8:30pm	£35 per 6 week block of lessons
Advanced	8:30 - 9:30pm	£35 per 6 week block of lessons
Pay as you go		£6

GP REFERRAL CLASSES – SOUTH CAMBRIDGESHIRE ACTIVE & HEALTHY 4 LIFE

Patients are referred by a Health Practitioner to improve their health through an individually tailored fitness programme over a 12 week course. Conditions that benefit from exercise include obesity, arthritis, high blood pressure and cholesterol, diabetes and depression.

How do I join?

If you think this scheme is for you please discuss it with your GP or Health Practitioner and they can complete a referral form for you.

Tuesdays

F4H Class (Y) 3:30pm – 4:30pm and 4:30pm – 5:30pm £72 (Twice a week, 24 sessions)

Thursdays

F4H Class (Y) 3:30pm – 4:30pm and 4:30pm – 5:30pm £72 (Twice a week, 24 sessions)

Plus assessments which cost £8 each and are undertaken at the beginning and end of the scheme.

The Active and Healthy 4 Life scheme prices have been subsidised by

South Cambridgeshire District Council and Cambridgeshire NHS.

CONTACT: Cottenham Sports Centre

Tel. 01954 288760 or cottenhamsportscentre.co.uk



ADULT LEARNING BOOKING FORM

TITLE	FORENAME	SURNAME	
ADDRESS			
POSTCODE			
D.O.B:			
TEL:			
MOBILE:			
EMAIL:			
	COURSE NAME	COURSE FEE £	RECEIPT No.
1.			
2.			
3.			

ARE YOU ELIGIBLE FOR REDUCED FEES?

THE FOLLOWING GROUPS MAY CLAIM THE REDUCED RATE

Working Family Tax Credit

Job Seeker's Allowance

Income Based Benefit

If you receive Pension Credit – means tested element of State Pension

Full Time Students up to age 18

Please note that proof of above will be required otherwise full fee will be due.



FECA IN LANDBEACH

THE TITHE BARN AND THE FEF

The group of volunteers dedicated to finding a future for the Landbeach Tithe Barn were delighted to receive a grant from the Architectural Heritage Fund. This went towards a structural inspection, and having confirmed that the wonderful old barn is safe for the public to visit it will be open for the Fen Edge Festival! The AHF is a charity working to promote the conservation and sustainable re-use of historic buildings for the benefit of communities across the UK. And ours is truly an historic building which you can see for yourself.

On Saturday 24th and Sunday 25th June, from 2 to 5pm, there will be Introductory talks, a children's I-Spy and refreshments available. You can be transported by a 1960s vintage bus to and from the festival in Cottenham to Landbeach.

How to find the barn. The kissing gate entrance is opposite No 2 Waterbeach Road, Landbeach CB25 9FA. Walk along the grassed track by the hedge. There is free parking on the road. If you come by No. 9 bus, best stop is near Cockfen Lane.

Email tithebarntrust@gmail.com

www.tithebarntrust.org.uk

www.facebook.com/friendsoflandbeachtithebarn

Twitter - @TBarnT

Tithe Barn Trust Registered Charity Number 1167108

LANDBEACH SOCIETY TALKS

These are held Wednesdays in the Village Hall at 7.30pm. Membership to the society is £3 a year and entrance to each talk is £3.50. You don't need to be a member to attend. Our line-up is: 19th April: Planning for Armageddon – local nuclear bunkers, Andrew Lacey; 17th May Lady Margaret Beaufort in Cambridge, Tracy Deakin. The Society lunch is on Saturday 24th June at 47 High Street and no events are scheduled for July and August.

NEW MOBILE WARDEN

The new post of Mobile Warden for Landbeach and Waterbeach will be trained by Age UK and will assist frail, elderly residents. District Cllr Ingrid Tregoeing informs us that funding has been agreed (a commitment of 3 years with a minimum of 2). Landbeach would pay

up to £1,000 a year (probably much less pro-rata'd amount in conjunction with Waterbeach) towards the scheme. The Parish Council would like to hear from, or of, Landbeach people who might appreciate visits (e.g. once a week).

LITTLE ONES AT PLAY

Busytots is open every Wednesday from 10am till 12 noon at Landbeach Village hall, including school holidays. We have a special session on 12th April with a mini Easter egg hunt. Normal admission applies (£1.50 single child family, plus 50p per additional child). Includes a yummy prize! For further info visit <http://busytots.weebly.com/> or like us on Facebook to be kept up to date www.facebook.com/LandbeachBusytots

IN THE VILLAGE

1st Monday of month: the mobile library is at 9 High Street, 15:40 to 16:20.

Thursday in term time: Sing to remember, 11:00 to 12:30, Baptist Church. For those with dementia and their carers.

DIRECTORY

Busytots Baby and Toddler Group

Gemma O'Shea..... busytots1@hotmail.co.uk

Coffee Mornings

Margaret Steane..... 01223 860128

Friends of Worts Meadow

Robert Humphrey..... 01223 863454

Landbeach Baptist Church

Neil Roberts..... 01223 860410

Landbeach Helpline

Maria Sylvester..... 07724 047656

Knit and Natter

Marion Lant..... 01223 860787

Landbeach Parish Church

Rev Paul Butler..... 01223 860353

Painting and Drawing Group

June Cross..... 01223 860669

Landbeach Society

Robert Stripe..... 01223 862297

Landbeach W.I

Jane Ward..... 01223 440961

Tithe Barn Trust

Robert Stripe..... 01223 862297

King & Co Solicitors

238 High Street Cottenham
Cambridge CB24 8RZ
Tel: 01954 251818

Open:
Mon-Thurs
9.00am - 5.00pm
Fri 9.00am - 4.00pm

CAR PARK AT OFFICE
FREE VERBAL OR WRITTEN QUOTATIONS GIVEN
OFFICES IN CENTRAL
CAMBRIDGE AS WELL

IMPINGTON ROOFING SERVICES LTD

ALL ASPECTS OF ROOFING

DOMESTIC, COMMERCIAL,
GRANT WORK UNDERTAKEN,
COLLEGES & UNIVERSITIES

NEW ROOFS - RE-ROOFS - REPAIRS

- Slates • Tiles • Felt • Commercial Roof Sheeting
- Chimney Rebuilding & Re-pointing
- Guttering • Leadwork • uPVC Cladding



ALL WORK GUARANTEED • FREE ESTIMATES
HIGHLY COMPETITIVE PRICES
PROMPT, RELIABLE, PROFESSIONAL SERVICE
INSURANCE BACKED GUARANTEES
COMMERCIAL ROOF SHEETING & CLADDING

(01223) 441852 **MOBILE: 07836 296012**

Unit 6, Convent Drive Ind Est, Waterbeach, Cambridge CB5 9QT

01223-441847 (FAX)

www.impington-roofing.co.uk

FEN EDGE FOOTPATH GROUP WALKS

All are welcome to join our walks and find out more about our activities. There is no charge. Please note the details of each in your diary and confirm your participation with the designated Walk Leader at least **ONE WEEK BEFORE THE DATE**. Details may have changed and we want to ensure that you "will never walk alone".

Sat 29th April A walk of about 10 miles over heathland and into villages with good views (weather permitting). Leaving CVC at 9.10am, starting walk at 10am. Walking from Therfield Heath, Royston towards Therfield and Kelshall. Please bring drinks and picnic. Contact Janet/Eileen (01954 250485).

Fri 12th May to Sun 14th May A walking weekend at Ravenstor, YHA Peak District. Contact David (01954 200074).

Sat 10th June A leisurely 11 miles from Linton via Bartlow, Ashdon and Hadstock. Bring packed lunch. Meet 9.20am at CVC to car share or 10am at Linton car park (signed) by Health Centre. Grid ref. 209/TL563468. Contact Chris/Judy (01223 690557) for details.

Sat 1st July Aldreth Causeway. For full details check the website: <https://sites.google.com/site/fenedgefg/>
24th to 28th July Summer School walking programme. SEE p28 of this issue. Details and enrolment at CVC (01954 288751).

Sat 16th Sept An 8 mile walk from Royston to Therfield with possible visit to Royston Cave (£5,£4 over 60s) at end. Pub Lunch available. Meet 9.30am CVC or 10.30am at 'The Heath' car park (free) beside the Heath Café on Baldock Road (TL345 406) Contact Edward (01954 251441).

Fri 13th – 15th Oct A walking weekend, Stratford upon Avon. Contact David (01954 200074).

Sat 21st Oct 8-9 miles, Sutton Bedford. Meet 9.30am CVC or 10am Sutton High Street, SG19 2NE. Exp map 208 ref. 222474. Bring packed lunch. Contact Ray (01954 205262).

Sat 11th Nov Contact Jane/Richard for details (01223 236315).

Tue 26th Dec Our traditional Boxing Day "Holly Walk". About 3/4 miles. Meet at junction Cottenham High Street/Broad Lane at 10.30am. All welcome. No need to book.



we've got your home improvements covered

PLUMBING & HEATING

▶ fit a new boiler ◀

▶ upgrade your heating system ◀

▶ annual service for your boiler ◀

BUILDING SERVICES

▶ bathroom & kitchen installation ◀

▶ new build ◀

▶ home renovation ◀



call: 01954 782920

or visit: www.ijcbuildingservices.co.uk

IJC is a family run Cambridgeshire business with over 30 years' experience. We offer a comprehensive range of domestic and small commercial works across all forms of building, plumbing, heating and renewable services.

45 Viking Way Bar Hill, Cambridge, CB23 8EL



Arthur Rank Hospice Charity

Volunteers needed for our new Charity Shop in Cottenham

Arthur Rank Hospice is looking for enthusiastic and reliable volunteers for our new charity shop which is due to open in April at 230 High Street, Cottenham. This is a fantastic opportunity to gain and develop experience in the retail sector, meet new people and be part of a team. You will assist in the day to day running of the shop, sorting and preparing goods, serving customers on till and window dressing.



Previous retail and customer service experience would be beneficial but is not essential as all training will be provided.

To find out more about how to become a volunteer, please contact Vipra Jain on 01223 675872 or email volunteer@arhc.org.uk

Fed up Repairing Your Flat Roof?

Does your roof suffer with any of the following?

Leaks • Moss Growth • Cracks or Bumps

Over 10 Years Old? Stop! Replace it now



You can't always see what is happening to your flat roof so, Replace it Once and for All with our unique RubberBond EPDM FleeceBack Roofing System, guaranteed not to leak or crack and tough enough to stand on.

Money Back Guarantee

Proven to last over 50 years and guaranteed not to leak - or we'll give you your money back.

CALL NOW for your FREE, advice, survey and no obligation quotation

**01223
258049**

PROJECTS 4 ROOFING

www.projects4roofing.co.uk



ADDING WARMTH & VALUE TO YOUR HOME

A fireplace is at the very heart of a room, it radiates a warmth, comfort and style that is unparalleled and creates an inviting and homely ambience.

At Ivett & Reed we specialise in creating the kind of distinctive fireplaces which add style, warmth and value to your home.

We have an extensive range of fireplaces designed to suit any room and style - from the most contemporary to the most traditional. All our fireplaces are custom made by our highly skilled craftsmen using only the finest quality materials sourced from all over the world.

Take a look at our extensive showroom or our comprehensive website to see our wide range of fireplaces and associated fixtures and fittings.



www.ivettandreed.co.uk

IVETT & REED
QUALITY SET IN STONE



811 NEWMARKET RD, CAMBRIDGE CB1 8PA Tel: 01223 233500

Visit our truly stunning display gardens ...



**Probably the largest display centre in the UK,
selling directly to trade and the general public**

Bannold are one of the UK's largest independent suppliers of natural hard landscaping materials. We stock natural products sourced directly from the UK and around the world enabling Bannold to offer premium products at the most competitive rates to trade and the general public.

- Natural Paving • Setts and Paviours • Stone Walling
- Decorative Gravels • Rockery • Boulders • Waterfeatures
- Topsoils • Soil Improvers • Bark Mulches • Sands
- Hardcore and Cements

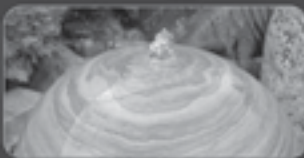


Freephone: 0500 012231
or 01954 231666

Capability Barns
Huntingdon Road
Fen Drayton
Cambridge CB24 4SD

Opening Times:
Mon-Fri 07.30 till 5.00
Saturdays 09.00 till 1.00

www.bannold.co.uk



ADVERTISING IN THE FEN

Free magazine of the Fen Edge Community Association, a charity, published three times a year. It aims to contain information of interest to people living in all five villages in the Fen Edge and the editorial content relates to a large extent to the activities of groups and organisations which are members of FECA. Each issue features the courses run by Adult Learning and Leisure, based at Cottenham Village College.

FEN issues can be viewed online at www.fenedge.co.uk and the website also carries information about FECA and how to join.

Contributions, including letters and points of view, are welcomed. Please send them to FEN Editor, Community Office, CVC, Cottenham, Cambs CB24 8UA. Or email: editor@fenedge.co.uk

ISSUE DEADLINES

May 8 (Autumn), Oct 31 (New Year)

The magazine is distributed to 6750 homes in the Fen Edge Patch which covers the villages of Cottenham, Rampton, Willingham, Landbeach and Waterbeach. There are three issues a year: New Year, Spring/Summer and Autumn, and content, including ads, can be viewed on the FECA website www.fenedge.co.uk.

	<i>Full Page £140</i>	<i>Half Page £90</i>	<i>Quarter Page £55</i>
P	132 x 189	60 x 189	60 x 90
L	—	132 x 90	132 x 40

P = Portrait **L** = Landscape

Please contact
advertising@fenedge.co.uk
or 01954 250082



• HANDYMAN SERVICES • PROPERTY MAINTENANCE
GARDEN MAINTENANCE • RUBBISH CLEARANCE
GARDEN FENCING • 24HR EMERGENCY CALL OUTS

01954 770308 / 07824 312732

WWW.BRIDGEMANMAINTENANCE.COM
JULIAN@BRIDGEMANMAINTENANCE.COM



Mickey Bendelack



CAMBSWATERBEACH.COM DRIVING TUITION

Friendly expert tuition with a DSA approved instructor

Beginner, advanced, pass plus and intensive

Foreign licence holders welcome

cambswaterbeach@hotmail.co.uk

Tel: 01223 440431

Mob: 07779 823680



CAMBRIDGE'S HIGHEST PASS RATE

Reliable - Local - Friendly - Family Business

Over 20 years experience

ELECTROCERT

Part P - Registered Electrician

- ✓ Assessment of the electrical safety of your wiring
- ✓ Fuse board replacement and upgrades
- ✓ Bathroom electrical installations
- ✓ Realistic prices with value for money
- ✓ All work fully guaranteed and insured
- ✓ FREE quotations and advice
- ✓ Periodic inspection and testing
- ✓ Extra sockets and lighting points
- ✓ Kitchen electrical installations
- ✓ Immersion heater supplies
- ✓ Garden lights and water features
- ✓ No job too small



NAPIT

Approved
Electrician



Call Peter on

01954 775003 or 07796 260735

Email: peter@electrocert.co.uk

10% Discount for Senior Citizens

www.electrocert.co.uk

BEAUTIFUL EYEWEAR AT DISCOUNT PRICES – SO WHAT'S THE CATCH?

No catch – we've been making great quality prescription glasses and sunglasses for over 30 years – and now you can buy your glasses directly from us.

Visit our factory shop – where you can choose from a wide range of contemporary frames with the help of our friendly and knowledgeable team.

We'd love to see you – please ring to book an appointment (we get quite busy!) and bring along your up-to-date prescription.

01954 231545

www.all-eyes.co.uk

sales@all-eyes.co.uk

20 Norman Way Industrial Estate

Over Cambridge

CB24 5QE

We are open between 9am and 5pm Monday to Friday



ALL EYES
SPECTACLE MAKERS



DRAGONFLY

TAX, ACCOUNTANCY & FINANCIAL MANAGEMENT

Supporting you to make the most of your finances

Tax returns, planning & advice

Annual Accounts

VAT & payroll

Budgeting, forecast & cash-flow

Individuals & Sole-traders

Freelancers and Contractors

Limited Companies

Charities & Not-for-profits

Paul O'Brien - Chartered Accountant, Tax Adviser & Finance Director

E: pob@dragonflyhq.co.uk

W: www.dragonflyhq.co.uk

T: 07549 926 409

"Taxification (noun) taxi-fi-ca-tion - the nice feeling you get from receiving a tax refund until you realise it was your money in the first place".

FEN EDGE PARISH COUNCILS

COTTENHAM

The 2017/18 precept has been set at £324,289. Much of the increase will finance a loan for the new Village Hall. Full budget details on our website.

Proposed developments (Gladman, Persimmon and Cambridge County Council – see a chart of where they are on our website) continue to be closely watched. Heritage statements were requested by the SCDC planning committee as no account had been taken of the listed Almshouses in close proximity to the proposed enlarged (to 19metre diameter) roundabout on Rampton/Oakington Roads. We pointed out that SCDC have broken planning law by not giving due notice under Planning (Listed Buildings & Conservation areas) Act 1990. We continue to oppose the Gladman development mostly because we believe the report understates the harm to Cottenham and overrates the benefits.

The Pre-Submission Neighbourhood Development Plan is published (on our website: www.cottenhampc.org.uk/neighbourhood-plan) for local consultation. Valid representations received on the dedicated address (cottenhamnp@gmail.com) will be formally documented. The aim is to go for formal examination in May/June.

Balancing Pond: Maintenance works have been continuing on Broad Lane/ the Balancing Pond and the area is a lot clearer with the ditches working properly.

Cycle path: Now that the cleared path (see p19) revealed broken solar studs under the grass and mud, Balfour Beatty have been asked to renew them. Usually SCDC is responsible for road sweeping.

Annual Parish Meeting: It's been a busy 12 months! Residents are invited to the APM on Tuesday 9th May at 7.30pm in the Village Hall. Chat to Councillors and hear reports by the Parish, District and County Councils. Refreshments available so please come along and join us.

Fen Edge Festival: We will host a display stand so you can meet your Councillors and check out the latest information on our various projects.

COUNCIL meets first Tuesday of month in Village Hall, recreation ground, Lambs Lane, at 7.15pm. Clerk: Jo Brook. Office: 250A High Street (to right of Community Centre). Open Monday 9.45am to 12 noon or by appointment. Contact details: 07503328401 or clerk@cottenhampc.org.uk and www.cottenhampc.org.uk

RAMPTON

The precept remains the same and the second stage of traffic calming is underway. Thanks to volunteers who braved the cold and damp weather in February to help with pruning and weeding the fruit trees in the community orchard. The trees are all growing well and the stakes and chicken wire have now been removed. Annual Parish Meeting on 24th April, AGM 8th May.

COUNCIL meets first Monday of month (not August), in village hall, 7.30pm. Clerk: John Garstang. Office (by appointment): 23 Cow Lane. Contact details: 01954 250960; ramptonparishclerk@gmail.com and www.rampton.org

LANDBEACH

COUNCIL meets first Monday in month (not August) at the Village Hall, 7.30pm. On bank holiday Mondays, meetings are on second Monday. Clerk: Maria Sylvestor. Office (by appointment 9am to 1pm, 2-5.30pm): 30 Lee Close, Cottenham. Contact details: 07724047656, landbeachparishcouncil@gmail.com and www.landbeach.org.uk

WATERBEACH

Our new Neighbourhood Plan logo, designed by a generous resident, is catching people's eyes and interest. Urban & Civic have applied for planning permission at the barracks site. Plans available to view at South Cambs Council offices at Cambourne, 9-5 weekdays. Online the planning reference is S/0559/17/OL. Please do contact us anytime or to receive our electronic newsletter email: npadmin@waterbeach.org.uk

COUNCIL meets first Tuesday of month at The Old Pavilion, 7.30pm. Clerk: Shelley Mason. Office: Tues and Thurs 10am-2pm (or by appointment), The Old Pavilion, Cambridge Rd. Contact details: 01223 441338; council@waterbeach.org.uk and www.waterbeach.org.uk

WILLINGHAM

Slightly increased precept to £117,300 for 2017/18. Additional items that were agreed include increasing the availability of Parish Council funded community lifeline alarms to 15. Just over 50% of those currently in use by parishioners. The council also hope to provide a second public defibrillator. The Annual Parish meeting will be on 17th May, and the AGM on 3rd May.

COUNCIL meets first Wednesday of month at the Octagon, 7.30pm. Clerk: Mrs Mandy Powell. Office (by appointment 10am-1pm): Ploughman Hall, West Fen Rd. Contact details: 01954 261027; email@willinghampc.org.uk and www.willingham-pc.org.uk

RAMPTON MOTORS

**Repairs and Servicing to All Makes of Car and
Light Commercial Vehicles**

Petrol & Diesel MOT Testing by appointment

Free Courtesy Car Available

Petrol, Diesel and Oil sales

Mon to Fri 7.30am to 5.30pm

Sat 8.00am to 12.30pm

8 The Green, Rampton, Cambs CB24 8QB

Tel: 01954 250792 Fax: 01954 206046



RICHARDSON
TREE SURGERY

Richardson Tree Surgery is a family business with over 40 years' experience of domestic and commercial arboriculture.

All of our work is carried out professionally and reliably by our experienced and friendly team.

- Council and College approved • Fully qualified and insured
- Free estimates

**01954 203836 | 07799 386005 | edward.rts@hotmail.co.uk
www.richardsontreesurgery.co.uk**

76 Hillcrest, Bar Hill, Cambridge, CB23 8TQ

FECA IN RAMPTON

FOR YOUR DIARY

Rampton Relay/Fun Run on Saturday 30th April 2017 in the large meadow beside Giant's Hill. Registration from 2pm. Start at 2:30pm.

Rampton Summer Fayre, 8th July on Rampton village green. Starting at 2pm, this traditional village fete is always a treat and fun for all the family.

RAMPARTS

Local creative talents will be on show at the Alternative Summer Exhibition organised by Rosemary Millar and RAMPARTS in the Village Hall on Saturday 15th (10am to 5pm) and Sunday 16th July (10am to 4pm). All sorts of art and craft can be seen, and a lot of it is for sale so you might pick up a treasure. Parking out front, no entrance fee and refreshments available – a perfect combination for summer. Who needs to go to London to the R(oyal) A(cademy)!

SPEED REDUCTION MEASURES

Since 2014, the parish council has been trying to slow down vehicles driving through the village after

a 'midnight racer' demolished the lamp post and notice boards outside the village hall. Stage one involved putting 'Give way to on-coming traffic' signs and lane reduction build-outs at both entrances to the village. These only slow traffic coming into the village, and are very common in some neighbouring villages. The second phase saw the installation of rubber based speed cushions which are less noisy than the hard ones and can be moved to other locations if needs be. Road signs indicate to drivers what lies ahead!

VILLAGE HALL

The management committee is looking for new members. The group meets on the 4th Monday monthly and there's also a maintenance morning once a month (cleaning gutters, raking leaves etc) so the hall always looks at its best. This summer the hall will be decorated inside and out (by contractors). For more details about joining the committee contact Alison Bateson (01954 208045 or email alisonjbateson@gmail.com).



IVETT & REED

QUALITY SET IN STONE

Ivett & Reed is a family business which has been creating and fixing *quality memorials* for East Anglian parishes since 1896, delivering service with sensitivity.

All memorials are *crafted in our own workshops*, drawing on over a century's worth of knowledge, skills and experience to help you make your decision.

Our *dedicated memorial showroom*, one of the largest in the UK, displays a selection from our vast range of headstones, plaques and vases. In addition we carry out all kinds of renovation work.



We are open six days a week and provide dedicated free parking

615 Newmarket Road, Cambridge CB5 8PA TEL: 01223 213500 WEB: www.ivettandreed.co.uk
Monday to Saturday 8.15am – 5pm (closed Sundays and Bank Holidays)



Local Fruit, Vegetables,
Eggs and Preserves

Coffee shop open at weekends
At Manning & Son, Station Rd,
Willingham CB24 5HG

Tel: 01954 206015
www.bushelboxfarmshop.co.uk

Furniture Restoration

Rob Ellis

*(French) polishing and repair
of antique (and not so antique)
furniture by a local restorer*

Telephone: 01954 250153
Mobile 07950 051577



DH Property Maintenance & Landscapes

- Painting & Decorating
- Carpets & Vinyls supplied and fitted
- Tiling
- Lock changes
- General house maintenance
- Pressure Washing
- Patios, Decking & Fencing
- Planting & Pruning
- Rotavating, Turfing & Seeding
- Hedging & Tree Work
- Garden and Rubbish clearance
- Seasonal lawn care / regular maintenance visits

And much more!



Please call Dave Hinson for a no obligation free quotation on -
Landline: 01954 205086 • Mobile: 07789 627758
Email: dhproperty@outlook.com

FROM THE COTTENHAM SURGERY

HOLIDAY VACCINATIONS

If you're travelling to countries in northern and central Europe, North America or Australia, you're unlikely to need any vaccinations but some countries require you to have an International Certificate of Vaccination. (Some also ask that you have six months left on your passport before you travel.)

Many tropical countries in Africa and South America won't accept travellers from an area where there's yellow fever unless they can prove they've been vaccinated against it. Saudi Arabia requires proof of vaccination against certain types of meningitis for visitors arriving for the Hajj and Umrah pilgrimages.

Find out as much as you can about the country you'll be visiting before you seek vaccinations then contact the surgery at least eight weeks before you travel and fill in a form. Other things may have to be taken into account (such as how long you'll be staying; your age and health; what you'll be doing when you're there, and if you've been in contact with animals).

Cottenham High Street Surgery only administer free NHS Vaccines (Diphtheria; Hepatitis A; Hepatitis B; MMR (measles, mumps and rubella); Polio; Tetanus; Typhoid). Other vaccinations if needed are given at a Travel Clinic. More information is available online at <http://www.nhs.uk/Conditions/Travel-immunisation/Pages/Immunisations.aspx>. Your GP or Practice Nurse may also be able to give you general advice about staying well when travelling, and also protecting yourself from malaria and the Zika Virus in those countries where one or both may be encountered.

DO YOU KNOW WHERE THE NEAREST DEFIBRILLATOR IS?

Cottenham Bowls Club (see p4) is the latest to have one of these emergency kits available to use if someone suffers a heart attack. Both surgeries in the village have one, as does the Cottenham Community Centre. Clear instructions for use are shown on the machine but it is also possible to do some training so you feel confident should an emergency occur. For bookings contact miranda@mi-time.eu

176a High Street
Cottenham
Cambridge
CB4 8RX

Tel: 01954 250280
Email: enquiries@mhhp.co.uk

Also at Soham
Tel: 01353 722060

MHH
THE MHH PARTNERSHIP
Chartered Certified Accountants

We provide a professional, friendly service to small and medium sized businesses, including the following. Please call us for a free initial consultation.

- Year End Accounts
- Self Assessment Tax Returns
- Business and Personal Taxation
- Limited Company Accounts
- Management Accounting
- Payroll
- Budgets and Bank Presentations
- Monthly Book-keeping and VAT
- General Business Advice

Partners: Michael Hawes FCCA • Helen Hawes FMAAT

**SPRING
SALE**

Starts 1st March

15%
off
everything

COMPLETE KITCHENS ELY

DESIGN > SUPPLY > INSTALL



German Handle-less Kitchens



Shaker and traditional style kitchens



Modern white and glass kitchens

- ✓ Free home measure & design visit
- ✓ See your new kitchen come to life with 3D design
- ✓ Installation service, fully project managed, including electrics, plumbing, tiling, flooring and building works
- ✓ Quality German and UK Kitchens
- ✓ Modern, handle-less, shaker and traditional style kitchens

- Full range of appliances including: Bosch, Neff and Hotpoint
- Worktops including: laminates, solid wood, quartz and solid surface
- Sinks and taps from top manufacturers like Blanco, Frankie and Carron Phoenix
- 6 full displays in our showroom as well as more than 50 door styles to choose from

**Showroom address: Black Bank Business Centre,
Black Bank Road, Little Downham, Ely, CB6 2UA.**

**Opening Times: Tuesday - Saturday 10.00am - 4.00pm
(Closed Sunday and Monday)**

Tel: 01353 860879

**E-mail: info@completekitchensely.co.uk
or visit www.completekitchensely.co.uk**

Find us on:



* Terms and Conditions - minimum spend level, £5000, cannot be used in conjunction with any other offer. Offer only applies when purchasing a complete kitchen including kitchen furniture, worktops and appliances. Offer available on all orders placed between 1st March 2017 to 30th April 2017.

WATERBEACH NEWS

BEACH NEWS AT 250!

The spring issue of the magazine told the story of how the Waterbeach Community Association (a self-funding group, not connected to the parish council) started. When Waterbeach School, under headteacher Roger Kilsby, was designated a 'Community' school by the County Council, it gave them responsibilities to the community such as making school facilities available to local groups after school hours. And so it was that the WCA was formed to identify the needs of the groups and how best to address them. It was Roger Kilsby and teacher David Eynon who put forward the idea of using school facilities to produce a village magazine, to let villagers know what was going on. Back then, 1972, 'publishing' methods were nothing like today's, and the first issue was produced on a 'direct image duplicator' (try posing that one in a trivia quiz!) You can read all about it online at www.waterbeach.org

WATERBEACH LIBRARY

"One of the many joys of being involved in the library is the variety of nationalities we meet among

the many new Waterbeach residents who become members," wrote Maggie Crane in the 250th edition of Beach News. Maggie leads the group of enthusiastic volunteers at the independent library which is run by and funded by the community. It is in the community room on the Waterbeach school site, there is a computer to use, connected to wifi.

The library has an interesting approach. If you join Cambridgeshire Library you can order a book online and it can be picked up and returned to Waterbeach. More importantly the charge indicated when you ordered will be waived. If you incur overdue charges, pay them at Waterbeach: "Every time you pay an overdue book charge you are paying for another new book for your Community Library – not a bad incentive," Maggie wrote.

Library opening hours are: MONDAY 2.45 TO 5PM; WEDNESDAY 2.45 TO 5PM, 6-8PM; Friday 2PM TO 5.30PM; SATURDAY 10AM TO NOON

The mobile library visits on the second Monday of the month at Denson Close (13.30 to 14.00pm) and Buchanan Centre (14.55 to 15.30pm).

WATERBEACH DIRECTORY

1st Waterbeach Brownies

Tiffany Langton 01223 862548

1st Waterbeach Guides

Holli Bielby 01223 528383

1st Waterbeach Rainbows

June Stephen 07956 949964

32nd Cambridge (Waterbeach) Scout Group

William Moon 01223 440259

Beach Bowls Club

Bill Clough 01223 861386

Beach Social Club

Geoffrey Donovan 01223 571329

Happy Folks Club

Stuart Atkins 01223 862674

RBL – Waterbeach & Landbeach

Norman Foster 01223 474622

St John's Church

Rev. Paul Butler 01223 860353

The Way Project

Shelagh Robertson 01223 860445

Wasps (After School Play Scheme)

Zoe & Wayne Badcock 01223 861140

Waterbeach District Gardening Club

Jerry Cooper 07785 912613

Waterbeach Badminton Club

Norman Setchell 07565 298834

Waterbeach Baptist Chapel

Martin Ensell 01223 862494

Waterbeach Brass

David Pell 01223 860396

Waterbeach Colts F.C.

Bernadette Sowden-Fletcher 07752 868255

Waterbeach Community Association

Jacqui Rabbett 01223 860993

Waterbeach Community Players

Julie Petrucci 01223 880023

Waterbeach Community Playgroup

Jacqui Woods 01223 440769

Waterbeach Day Centre for the Elderly

Mary Longstaff 01223 564666

Waterbeach Indep. Lending Library (WILL)

Maggie Crane 01223 440560

Waterbeach Military Heritage Museum

Adrian Wright 01223 861846

Waterbeach Mothers' Union

Ingrid Tregoeing 07715 908694

Waterbeach Parish Council

Parish Clerk 01223 441338

Waterbeach Salvation Army

Colin Harrod 01223 440190

Waterbeach School P.T.A.

..... 01223 718988

Waterbeach Toddler Playgroup

Wayne Badcock 07808 357729

Waterbeach Village Society

Adrian Wright 01223 861846

Waterbeach WI

Sheila Lynn 01223 860948

Waterbeach Wives Group

Sheila Gill 01223 861999

Woodland Trust - Cow Hollow Wood

Adrian Wright 01223 861846



TAIT FINANCIAL SERVICES LTD

WEALTH MANAGEMENT CONSULTANTS

A wealth of expertise on your doorstep

We provide an experienced wealth management service and offer specialist advice in a wide range of areas including:

- Investment planning
- Retirement planning
- Inheritance Tax planning

For further details contact James Tait on:

Tel: 01954 231768

Mob: 07768 305151

Email: james.tait@sjpp.co.uk

Website: www.taitfinancialservices.co.uk

CAMBRIDGE POND CLEANING SERVICE

**Pond problems?
We can help!**

Over 20 years experience.

We do the mucky jobs you hate, so your fish enjoy a clear healthy pond.

- 
- ◆ Pond Design
 - ◆ Pond Vacuum Cleaning
 - ◆ Filter Cleaning ◆ Water Testing
 - ◆ UV Servicing ◆ Liner Repair
 - ◆ Green Water Problems

See Website or call 0792 6521135

www.cambridgepondcleaningservices.co.uk

OAP Discounts

ART & CRAFTS IN THE FEN EDGE

July has become the month for everyone to discover the creative people in our villages through the Cambridge Open Studios scheme. Make time on Saturdays and Sundays to visit the local artists in their working environment.

COTTENHAM

Weekends 1/2 and 8/9: Iona Howard, fine art and print making, 4 Broad Lane, CB24 8AJ
All four weekends: Amanda MacPhail, lively drawings hand applied to bone china, The Wooden House, Twenty Pence Rd, CB24 8SP
8/9 and 15/16: Wendy Martin, stone and wood carvings, High Drove Farm, Long Drove, CB24 8RL

WILLINGHAM

All four weekends: Michael Hughes, functional and decorative items using locally-sourced wood, Little Oak, 66 Station Rd, CB24 5HG
1/2 and 8/9: Paula Armstrong and Katherine Gravett, sculptural ceramics and organic

drawings, Unit 1e, Highgate Farm, Over Rd, CB24 5EU

All weekends: Gabriella del Valle, handcrafted silver jewellery, Thorpe Cottage, 2 Priest Lane, CB24 5HZ

1/2 and 8/9: Jutta Robinson, contemporary jewellery, 55 Balland Field, CB24 5JT

WATERBEACH

8/9 and 15/16: Helen Humphreys, pottery and sculpture, 18 Rosemary Rd, CB25 9NB

1/2, 8/9 and 15/16: Susan Barnes and Sheena Grummitt, printmaking and ceramics inspired by nature, main entrance Waterbeach Barracks, CB25 9PA

1/2, 8/9, 15/16: Summer at the Beach exhibition, 11 local artists (paintings, photography, ceramics, textiles, sculptures, illustrations), Waterbeach Barracks, off Denny End Rd, CB24 9PA

1/2, 8/9 and 22/23: Stuart Cox, paintings, sculptures and photographs, 32 Winfield Rd, CB25 9PR

THE VAN BOYS

Man with a van service

Courier, Haulage,

Pickups/Deliveries,

Small Removals,

House/Garden Clearances,

Will travel any distance

For a free quote no obligation

Contact: Ian 01954 200251

or 07599 101924

Thevanboys@hotmail.com

GUITAR/UKULELE & PIANO LESSONS



Learn how to play any of these instruments in just a few easy lessons.

ALL STYLES CATERED FOR

(From Bach to Boogie, Country to Classical/Rock/Pop & Blues)

EXPERIENCED TEACHER

(Member of the Registry of Guitar Tutors)

Contact Helen on:

07798 526084

or visit www.guitarlessons-cambridge.co.uk



COTTENHAM BARBER SHOP

270 High Street, Cottenham, CB24 8RZ



WE OFFER:

- Professional haircuts
- Shaves
- Beard trims
- Colour

Tel: 07871 415632

Find us on Facebook: @Cottenham Barber Shop

FEN EDGE MISCELLANY

FRANCE HERE WE COME!

The Fen Edge Twinning Association's visit to Avrille will be from 28th April to 1st May (a bank holiday). Our group will travel from Cottenham Village College by coach to Dover, then by ferry to Calais. The return cost for the coach will be £70 per adult. As in previous years, children travel free to encourage as many to travel with their families as possible.

FETA has some new members this year and always offers a welcome to anyone interested in taking part in these exchanges – this will be the 19th arranged since our twinning link was forged with this town in western France. The weekend is relatively free and relaxed with just two group events: a dinner on Saturday and a Sunday picnic in the park, weather permitting. This gives plenty of time to get to know our hosts and other participating families.

AND on the last weekend in May the French choir will be coming here to see the choir led by Siobhan and Tim Lihoreau and a joint concert will be arranged. Watch the website for more information or contact juliagwilt@gmail.com

ROTARY PARKING RECORD

For 15 days over the Christmas/New Year period, volunteers from the Rotary Club of Cambridge South manned three car parks in the city to raise funds for good causes which will benefit to the tune of £39,500! The money went to: Headway (Cambs) for people with brain injury; Rowan (Cambridge based art centre and charity for learning-disabled people); Cambridge Science Centre; Cambridge Women's Aid; Wintercomfort for the Homeless; CAMpod, CU Vet School Trust) plus some small local and international charities. Thanks go to the motorists who paid £7 (or more if they wished) to stay for as long as they liked while the parks were open. **Mike Smith**

SUNFLOWERS CHOSEN

Leading social care publisher and event producer, Care Choices, has made Support 4 Sunflowers, its first ever Charity of the Year.

The charitable arm of Sunflowers Care operates a fully-adapted, four bedroomed home-from-home in Cottenham offering nurse-led care to children aged 0 to 18, with a variety of complex health needs. It also can provide long-term step-down care, short break respite care and rehabilitation following illness or injury.

Lisa Werthmann, Director of Creative Operations at Care Choices, said "We are in a great position to promote and help raise funds for small charities that may otherwise not receive the coverage and exposure they deserve.

"We chose Support 4 Sunflowers after being introduced to them by Linda Roberts, a powerful advocate for disabled children and young people. Getting to know about the amazing work Sunflowers does, we decided to offer as much support as we possibly can this year via our fundraising efforts."

Tina Pollard of Support 4 Sunflowers said, "This is an exciting time for us and we are looking forward to working with Care Choices, to raise much-needed funds to provide sensory equipment and experiences for the children and young people that we are privileged to provide care for."

To find out more about Care Choices and its brands, visit www.carechoices.co.uk More information on Support 4 Sunflowers and Sunflowers Care from www.sunflowers-care.co.uk

Continued on next page



The Complete Gas Heating and Plumbing Company

**Plumbing • Heating • Gas • Bathrooms
Water Softeners • Property Maintenance**

Tel: 01954 204044 • Web: www.entiregroup.co.uk
Email: service@entiregroup.co.uk

FEN EDGE MISCELLANY - cont

NEW CHARITY SHOP

Arthur Rank Hospice Charity has taken over the old Post Office in Cottenham High Street where they hope to sell a great selection of books and toys as well as an assortment of fashion items – especially for children. Volunteers are needed to run the shop. If you would like to be involved contact Vipra Jain, Recruitment and Training Coordinator on 01223 675872.

The hospice which is now in new premises (Cherry Hinton Road, Shelford Bottom, Cambridge CB22 3FB) will be the beneficiary of this year's Yesteryear Road Run (see p17).

SWAPPING SKILLS

Have you heard about CamLETS? It was started in 1993 and enables members to exchange skills through a barter scheme – that's the LETS bit: local exchange trading system. They 'trade' using a 'currency' called CAMS (saves needing or using real money). It's worth looking at the website

www.cam.letslink.org then answer a few questions to see how you could benefit by getting involved.

Write down 10 things you like doing: painting, tuition, organizing things, writing, growing plants, gardening, making jam, cooking cakes...

Write down 10 things you hate doing: cleaning windows, shopping, vacuuming, painting, gardening, ironing, cooking...

Now list the 10 things you could share: lawnmower, seed spreader, internet access, tools, spare room, camping equipment, guidebooks...

Or things you want to sell: garden produce, homemade jams, unwanted clothes, books, records, dvds, toys, furniture.

Through CamLETS what others may hate you may love, and vice versa, what you may want to get rid of others may need. It could be thought of as the first community recycling plan and it is simple to operate. Just look on the website for the date of the next social and trading event – and you're away!

Universal Fencing Co Ltd


Tel: 01954 231335
Fax: 01954 231202

www.universalfencing.co.uk
SUPPLY ONLY OR SUPPLY AND ERECT
FREE ESTIMATE

 Poleado	 Featheredge
 Field Gates	 Security Fencing

Unit 11 Norman Way Ind Est, Over, Cambridge, CB24 5GE
Open: MON-FRI 7.30am – 5pm
SAT 7.30am – 12am
Commercial, agricultural, industrial & domestic
fencing contractors

Avenue

Property Management

Quality Property Rental Service

A local, personal & professional approach to all aspects of property management & letting in your area

We provide a friendly & efficient service to Landlords & Tenants including property maintenance & repairs and comprehensive tenant referencing

25 years' property experience

We look forward to hearing from you for an informal chat

Tel: 01223 353 353 or 01354 691 560
enquiries@avenue-properties.co.uk



Do You Need A Chiropodist? Are You Sure?

**As a fully qualified Foot Health Practitioner
I am trained in the following:**

Diabetic Foot Health Care

Toenail Cutting

Minor Wound Dressing

Bunion Relief

Corn and Callous Removal

As well as the treatment of many other foot
health problems.

All in the comfort of your own home.

**Tracy Griffiths Foot Health
Practitioner
S.A.C.Dip FHPT, S.A.C.Dip FHPP**

**Please call or email with any queries or
bookings:**

Telephone: 07840 636883

Email: tracy.griffiths@hotmail.com

Cambridge Education and Training

Providing tutors for personal home tuition for over 23 years



Tel: 01223 398800
info@cetcambridge.co.uk
www.cetcambridge.co.uk

- Cambridgeshire's leading home tuition agency
- Based in the county
- One-to-one home tuition
- Tutors located throughout Cambridgeshire and beyond
- Hundreds of highly qualified, fully vetted and experienced tutors
- Over 60 subjects covered

Whirl & Twirl Round Dance Club

Open Day - Saturday 6th May
Cottenham Community Centre

Come and join us! 10.00am till 1.30pm



Dancing is great for health and fitness, so if you ever wanted to dance, now is your chance. Come and have a go! It's free!

The Club meets every Wednesday at the Community Centre, High Street, Cottenham. (Opposite the Coop).

Club sessions start at 7.30 p.m. and we are looking to attract new members. Anyone is welcome to come along and take a look at what we do.

Dancing is to a cuer who calls every step and all you need is a pair of feet and a willingness to have some fun. Partners are not essential. We dance to a large variety of music and dances which include Waltz, Rumba, Jive, Cha Cha etc.



Contact Irene 07876 458 522

Cottenham Computers

01954 593025

Call the experts for good honest advice

We will come to your home or business to fix your computer

Got any of these issues?

- ✓ Computer crashing
- ✓ Network Wi-Fi connection Issues
- ✓ Computer infected with viruses
- ✓ Windows won't boot
- ✓ Can't access your email
- ✓ Can't access the Internet
- ✓ Computer running very slow


Services

- ✓ PC & Laptop Repairs & Upgrades
- ✓ Macbook & iMac Repairs & Upgrades
- ✓ Broadband / Wi-Fi Installations
- ✓ Full Hardware Diagnosis
- ✓ Hard Drive Data Recovery
- ✓ Supply New PCs & Laptops
- ✓ 3 Years Hardware Warranty on New PCs

Working all day? Then we can collect and deliver FREE to and from your work place*

* Within 10Miles of Cottenham

We cover Cottenham & surrounding towns & villages

Authorised UK
Partner 

For all computer related problems give us a ring!

www.cottenhamcomputers.co.uk



Microsoft

FECA IN WILLINGHAM

QUEEN ELIZABETH II FIELD

Following publication of the 2009 Willingham Parish Plan and six years of tireless fundraising, at last Willingham has a park it deserves with a range of equipment to suit all ages.

This £150K redevelopment began after the need for improved play facilities was highlighted and, following a village-wide petition, Willingham Action Group secured 'Fields in Trust' status for the playground which guaranteed it as a village amenity for recreation'. User groups of all ages took part in the exciting process of selecting play equipment before a tender went out for plans from play companies. A final plan was selected (although sadly it fell short of some of the more aspirational requests made – a swimming pool, a skate park...!)

Two 'It's a Knockout' events, in 2014 and 2016, raised enough for the installation of the under 12s and over 12s equipment. Willingham now has a park to be proud of, one that will engage and challenge our young people, as well as being a fantastic space for families to enjoy a picnic on a sunny day.

None of this would have been possible without the generous support of a number of bodies including: Imagen, AmeyCespa, WREN, Domino Printing, Amazon, Brewers Decorator Centres, Fen Edge Community Association and Willingham Parish Council. We would like to extend our thanks to them all.

WAG also secured a grant to fund village tree planting. On the QEII field 50 trees have now been planted including a circle of five hazels as a living play area dedicated to the five fantastic fundraisers. Now that it is completed, we hand over the facilities to residents to enjoy, develop and protect.

WAG QEII Team

It's coming soon ...

1st Willingham Beer Festival
Thursday 29 June – Saturday 1 July at Willingham
Social Club

(function room plus marquee)

20+ real ales and ciders (provided by The Bank)
Wohoo!

Food including BBQ, Live music on all three days -
Alchemy, Steve Lockwood, Cat's Whiskers, Keith Pearson
Willingham projects to benefit, including in particular the
refurbishment of the Social Club with much needed disabled toilet.



WE'RE VERY SOCIABLE!

Willingham Social Club always has something on the go. The Jam Club's on the last Monday of the month, Jazz Club is first Sunday of the month, and there are some special events planned as well. See website for contacts or more information: www.willinghamsocialclub.com
Tickets are available for most events from the club
01954 260557 or www.wegotickets.com/location/15472

WILLINGHAM DIRECTORY

Beavers, Cubs and Scouts

Mrs M Dellar01954 260045

Honeypot Pre-School (term-time only)

Mrs Kate Van Dort01954 201567

Tigger Toddlers

Lisa Smith01954 201282

Koala Kids01954 260046

Willingham Guides and Rangers

Lynn McGoff01954 261296

Bubbles/Messy Church

Heather Mellows01954 270063

TOPS (Baptist Church Toddlers Group)

Hilary Wyllie01954 260051

Kids' Friday Club (Baptist Church)

Loriane Bald01954 261189

Allotments

Sue Ayling01954 260718

Willingham Action Group (WAG)

Mike Tidball01954 260647

Willingham Combined Charities

Mrs Gail Cook01954 231272

Workers' Educational Association

Rosemary Mumford01954 260934

Willingham Walkers

Mike Tidball01954 260647

Willingham Youth Club

enquiries@willingham.youthtrust.org

Women's Institute

Jacky Sparks01954 261831

Women's Royal British Legion

Mrs M Few01954 260124

Cycling Club www.willinghamwheels.com

Tennis Club

John Graham01954 231968

Willingham Social Club

John Carey01954 202021

Willingham Sports Pavilion

Parish Council01954 261027

Willingham Wolves (Boys & Girls Football)

..... willinghamwolvesfc.co.uk

Baptist Church

Rev. Paul Joel01954 260538

Methodists (Ministerial Contact)

Rev Hilary Cheng01223 700778

Roman Catholic Priest

Fr Karol Porczak01480 462192

Salvation Army

Don and Trish Hall01223 233492

Parish Church

Rev Julie Anderson01954 231496



JRS

ROOFING SERVICES

Flat Roofing Specialist

All flat roofing undertaken –
felt, single ply and liquid plastics

All redecking and lead work • Repointing of chimneys
Fascias, soffits and guttering
General house maintenance
Insurance work • Free advice and quotations
All work guaranteed • Friendly efficient service

Tel: 01954 201088
Mobile: 07885 030 547



BEAUTY, RELAXATION AND A WARM WELCOME...

Specialists in Eyelash Extensions,
Shellac nails, Manicures & Pedicures,
Spray Tanning, Hair removal,
Facials and Massage.

Stockists of Elemis Skincare, Sp@home,
bareMinerals Makeup, CND Vinylux,
Sienna X & St Tropez Tanning Solutions
and much more...

****New Online Booking Facility****

Gift Vouchers now available online at
www.englishrosebeautyhouse.co.uk

 **16 Berrycroft, Willingham,
Cambridge CB24 5JX** 
01954 261176



Target Print Ltd

WE CARE ABOUT THE DETAIL



Quality printing

to fit your budget

Newsletters • Brochures • Flyers • Letterheads • Compliment Slips • Invoices • Statements
Purchase Orders • Manuals • Business Cards • Folders • Booklets • Posters • Postcards
Envelopes • Continuous Stationery • Menus • Invitations • Labels • **and much more ...**

Broad Lane, Cottenham, Cambridge CB24 8SW
Telephone: **01954 251189**
print@targetprint.org www.targetprint.org



INNOVATIVE GRAPHIC DESIGN SOLUTIONS

Let me help you
wow your customers
with designs tailored
to your needs //

I'm Steve Davies, a graphic designer based in Cambridgeshire. I provide tailored design solutions for businesses of all shapes and sizes, or for individuals looking for a one-off bespoke design for that special occasion.

With nearly 20 years experience creating everything from logos and business cards to large format graphics for events and exhibits, I work closely with my clients to fully understand their requirements and to appreciate what really makes their customers tick. No job is too small and each and every one is given the same creative and collaborative treatment.

If you have a project you wish to discuss or to request a price list, drop me a line. I'd love to hear from you:

studio@stevedaviescreative.com

...in the meantime, why not take a look at some recent work on my website:

www.stevedaviescreative.com

SAY HELLO...

e: **studio@stevedaviescreative.com**

w: **www.stevedaviescreative.com**

m: **07738 159653**



**CORPORATE
IDENTITY**



**BUSINESS
CARDS**



**CORPORATE
STATIONERY**



**BROCHURES
& FOLDERS**



**MARKETING
MATERIAL**



**POSTERS
& BANNERS**



**FLYERS
& MAILERS**



**MENUS
& SIGNAGE**



**EVENT
GRAPHICS**



**RETAIL
GRAPHICS**



**GREETING
CARDS**



**WEDDING
STATIONERY**

Cottenham SEVEN K FUN RUN 2017

**7.0K Fun Run
including Junior Fun Run
& Market stalls**

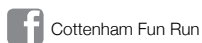
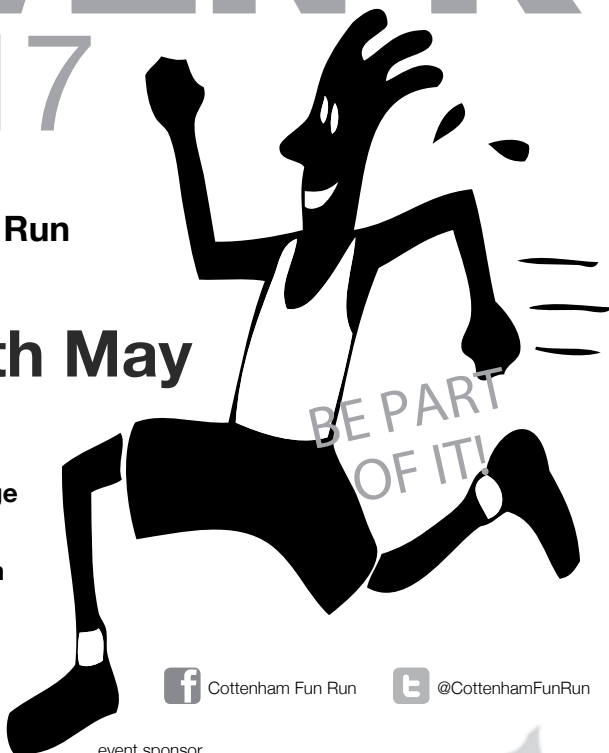
Saturday 6th May

Race Registration
from 9am to 10:30am
at Cottenham Village College

7K event - start 10:45am
Junior event - start 10:00am

Race Entry Fee
£6 Over 16's - £4 Under 16's

All proceeds, after costs,
from this year's race will
be donated to Twinkle Star
Children's Trust.



event sponsor

MALARY

Class-leading waste solutions



Register online at www.fenedge.co.uk

Cambridge Executive Cars

Est.2005

**Delivering you and
quality, door to door**



Based in Willingham, we are your mid to long distance Executive travel service specialists.

We service all airports, seaports, corporate events, London and much more for no extra cost than a standard taxi. So why not travel in style with us, your local company?!

Call or email for a quote today...

Bookings@cambridge-executive-cars.co.uk

Richard on [07782 130 380](tel:07782130380).



www.cambridge-executive-cars.co.uk

☎ 01223 861698

When Experience Matters

Your trees are in safe hands with Acacia Tree Surgery, the leading East Anglian tree care specialists. We have been providing tree care services since 1985, supported by an expert team of arborists with over 100 years combined experience.



Services

We provide services and surveys for private clients and commercial companies including local authorities, Universities and Colleges, the National Trust, housing associations, letting agents and developers.

Competitive Prices and Professional Guarantee

You will find our prices and terms highly competitive. We offer a **FREE no obligation quotation** with advice and guidance on the management and care of your trees.

Complete Customer Care

It is our company policy to deliver the **best customer experience with a professional, friendly and a helpful service**. This is a service that goes beyond tree surgery and manages the entire project including planning applications and liaising with local authorities, police divisions, utility services and your neighbours.

About us

We are trusted tree surgeons covering four family generations. Acacia is now established as a **class leading surgery with a reputation for quality tree services and consultancy**.

You will find our fully trained staff knowledgeable and helpful. We complete work to industry standards and best practice. All sites are left clean, safe and tidy.



We remain committed to providing our increasing network of satisfied clients with an efficient, friendly and helpful service where private, public and commercial clients can **feel confident in relying upon our expert knowledge**.

Tree Surgery
Tree Preservation
Tree Consultancy
Planning
Tree Surveys
Management
Stump Removal
Pruning & Shaping
Insurance Reports
Mortgage Reports



Seasoned firewood
available all year

For a FREE no obligation quotation call 01223 861698