

# Fen Edge news

community association

AUTUMN 2019



*News from your local Clubs,  
Groups and Councils*

*Plus*  
**ADULT &  
FAMILY CLASSES**

PRODUCED BY THE FEN EDGE COMMUNITY ASSOCIATION FOR THE VILLAGES OF  
**COTTENHAM • LANDBEACH • RAMPTON • WATERBEACH • WILLINGHAM**



# Put your love in writing!

**FREE Home Consultation**



Look after your kids with a Will - fix who will look after them if something happens to you!

Worried what they'll inherit? Tax, care fees or legal costs might eat into their inheritance?

**A range of Trusts can help protect your assets**



Old age may bring problems. Disability, Alzheimers, etc. Look after your family by setting up Lasting Powers of Attorney.

**They MUST be organised BEFORE loss of mental capacity**



*'We always meant to get our Wills done...'*

Don't leave it too late to protect your family!

**Dying without a Will can cause major expense and misery for your family**



**Don't let your family's last memory be a hefty bill for your funeral.**

We check ALL main funeral providers so you can choose the best. FREEZE rising funeral costs today with a pre-paid funeral plan



**[www.justwillscambridge.com](http://www.justwillscambridge.com) 01223 655 646**



Your local office for a national Legal Services company, Just Wills & Legal Services Ltd.



The **Fen Edge Community Association** is a charity promoting and supporting Clubs, Groups and Societies in Cottenham, Landbeach, Rampton, Waterbeach and Willingham.

## Contact Us

Neil Gough – Chair

✉ chair@fenedge.co.uk

✉ editor@fenedge.co.uk

✉ advertising@fenedge.co.uk

🌐 www.fenedge.co.uk

📘 fenedgenews

**Copy date for next issue: 28 October 2019**

Registered Charity No. **293020**

## Autumn 2019

### 4 Chair's Message

### 9–23 Cottenham

9 The Cottenham Club, All Saints' Church, Baptist Church, Cottenham Toy Library

11 Cottenham Tennis Club

13 Cottenham United Football Club, Cottenham Bowls Club

15 Cottenham Cricket Club, Cottenham Gardeners' Club

17 Summer Reading Challenge, Cottenham WI, Cottenham Carecar

19 Why were there so many pubs?, Cottenham Theatre Workshop

21 Cottenham Community Land Trust, Cottenham Connected; 23 Cottenham Community Centre

### 25 Landbeach Tithe Barn

### 27–29 Rampton

27 Rampton Village Hall, Rampton Friday Club

29 Rampton Horse Show, Ramptons

### 39–47 Willingham

39 Willingham Youth Trust, Willingham Action Group

41 Willingham Social Club

43 Willingham WI, Willingham Gardening Club

45 Willingham Bowls Club; 47 Willingham Wheels

### 49–51 Parish Councils

49 Cottenham Parish Council, Rampton Parish Council

51 Willingham Parish Council

### 53–55 Fen Edge Festival report

### 57–63 Fen Edge Groups

57 Fen Edge Orchestra, Fen Edge Twinning Association

59 Stitch Wild; 61 Rotary Club

**IVETT & REED®**  
QUALITY SET IN STONE

**www.ivettandreed.co.uk • 01223 213500**  
615 Newmarket Road, Cambridge CB5 8PA  
Open Mon-Fri • FREE parking



At Ivett & Reed we've been working marble and granite since 1896, making us one of the UK's most experienced stone worktop specialists. In addition to our stunning natural granite worktops, hand finished in our on-site workshops, we are approved quartz worktop fabricators for leading brands such as Silestone and Caesarstone. Meanwhile, our state-of-the-art waterjet cutting technology allows us to expertly finish sintered surfaces, such as Dekton and Lapitec. We employ our own fitters to offer a comprehensive templating and installation service.

**FIREPLACES • FIRES & STOVES • WORKTOPS • MEMORIALS • STONework**

## CHAIR'S MESSAGE

I am writing this report just after we have enjoyed the most spectacular Fen Edge Festival ever. Many people have spoken to me about the 2019 Festival with an obvious sense of pride in what the community achieved over the weekend. The variety and quality of the activities, the excellent organisation and the over-riding sense of goodwill and joy – these things do not happen by accident but reflect the extraordinary commitment of the organisers, volunteers, and participants to delivering a very special event. A big “thank you” too to all the sponsors without which it would not be possible. We can all feel very proud of the Festival and our community. On behalf of the Fen Edge Community Association (FECA) I want to warmly congratulate the Organising Committee that was so ably led by Lucy Dumbrell. It was a great team. The Festival has evolved over the years and I was particularly proud of two new initiatives this year – the Friday afternoon tea and bingo for those of pensionable age that was laid on by the Cottenham Day Centre and the reusable cup scheme that was managed by Sustainable Cottenham. Two of our FECA member groups saw opportunities to make the Festival better; worked hard to deliver those and succeeded spectacularly. Over 140 people enjoyed the afternoon tea and we eliminated all single use plastic usage at the Marquee bar, the Venue and the Pimm's tent. Very well done to both groups. It was a pleasure to see so many FECA member groups and associations actively involved in the Festival.



As in 2017, we offered the opportunity for FECA members to put themselves forward as direct beneficiaries of the Festival and this year the four selected groups are the Cottenham Tennis Club, Rampton Friday Club, Willingham Youth Trust and Sustainable Cottenham. They will share 50% of the overall surplus. Congratulations to those organisations and thank you for all the other applications we received. It is worth making a special mention of sponsorship (both in money and in kind). Sponsorship enables the events to be more accessible. This year sponsorship has enabled us to provide the afternoon tea to the over-65s on Friday without charge, limit the charge for riding on the hugely popular Carousel and the Total Wipeout to £1 per ride, provide free children's entertainment shows and procure the reusable cups that eliminated single use plastics. Sponsorship also supported musical entertainment at the Venue and the Marquee on Saturday and Sunday without having to make any charge, enabled us to close the road and erect fencing for safety. It would not be the same Festival without sponsorship because families wanting to enjoy all the activities would find the weekend unaffordable and that would be a great shame. So thank you to the sponsors!

In May, we held the FECA AGM and it is gratifying to see how the association is also growing in numbers and impact. Our membership is now at 69†. This is creating some nice problems. Our members are producing more information that residents want to read and this in turn attracts more advertisers. Consequently, the Fen Edge News goes from strength to strength and we have had to expand the number of pages to accommodate the additional information.

Our grants increased this past year by over 50% to £10,117. We made 16 individual grants and I believe as FECA, we are making a very positive impact on our community. If you would like to get more involved in our work, please do contact me.

### Neil Gough

Chair, Fen Edge Community Association

† Welcome to new members: Waterbeach Cricket Club, Sustainable Cottenham, Cambridge Equine Assisted Learning, All Saints' Church Rampton Action Group, Fen Edge Association for the Learning Disabled, The Cottenham Club and Cottenham Charities.



# FEN EDGE EVENTS DIARY

## What's on and when in the villages

### AUGUST

**Fri 2** 6–8pm Rampton Friday Club – Club Night at Rampton Village Hall (p27)

**Mon 5** 7:30pm Willingham Gardening Club – *The Crop Circle Mystery* at Willingham Social Club (p43)

**Wed 7** 2–4pm Cottenham Women's Institute – Tea and Cakes at the Cottenham Club (p17)

**Thu 8** Willingham Women's Institute – Summer Outing to 78 Derngate in Northampton (p43)

**Fri 9** 6:30pm Cottenham Gardeners Club – Evening drinks party at the Lawrences' garden (p15)

**Sat 10** 7:30pm–12am The Cottenham Club – School Disco: *Mix of 1970s, 80s & 90s music* (p9)

**Sat 17** 7:30pm–12am The Cottenham Club – Music: *Sealy's Vinyl Sound Show* (p9)

**Sat 31** Willingham Gardening Club – Horticultural and Craft Show (p43)

### SEPTEMBER

**Mon 2** 7:30pm Willingham Gardening Club – *Ferns and other foliage plants* at Willingham Social Club (p43)

**Thu 5** 7:30pm Fen Edge Archaeology Group – *Searching for the Anglo-Norman criminal: the Conquest, capital punishment and deviant burial practices* by Alyx Mattison at Tony Cooper Suite, Sixth Form Block, Cottenham Village College

**Fri 6** 11:15am–12:15pm Cottenham Toy Library – Soft Play Session at Cottenham Community Centre (p9)

**Fri 6** 6–8pm Rampton Friday Club – Club Night at Rampton Village Hall (p27)

**Sat 7** 3:30–5:30pm All Saints Church – *Messy Harvest* (p9)

**Sat 7** 8pm Willingham Social Club – Free members' night: *Johnny Dee, comedy entertainer* (p41)

**Sun 8** Cottenham Gardeners Club – Visit to RHS Wisley (p15)

**Mon 9** 11am–1pm Willingham Parish Council – District Council Surgery at Ploughman Hall, West Fen Road, Willingham (p51)

**Mon 9** 7:30pm Willingham Women's Institute – *Nordoff Robbins Music Therapy* at Willingham Social Club (p43)

**Wed 11** 7:30pm Cottenham Women's Institute – *Memory Strategies and Phobias* by Sally Crawley at Cottenham Village College (p17)

**Fri 13** 7:30pm Cambridgeshire Bird Club – *Global threats to seabirds: are we the albatrosses around their necks?* By Richard Phillips at St John's Community Hall, Hills Road, Cambridge

**Fri 13** 7:45pm Cottenham Village Society – *Newspaper Cuttings* by Ralph Carpenter at All Saints' Church Hall (p19)

**Sat 14** Fen Edge Footpath Group – Walk: *Ely, Prickwillow and a museum*, Contact [fenedge.footpathgroup@gmail.com](mailto:fenedge.footpathgroup@gmail.com)

**Sat 14** 1–5pm Landbeach Tithe Barn Trust – Heritage Open Day at Landbeach Tithe Barn (p25)

**Sat 14** 8pm Willingham Social Club – Music: *Vex, Live funky party band* (p41)

**Sun 15** 2–4pm Cottenham Connected: Inaugural meeting at The British Legion Hall, on the High Street, Cottenham (p21)

**Wed 18** 7:30pm Landbeach Society – *Cambridge Bonfires* by Sean Lang at Landbeach Village Hall

**Fri 20** 11:15am–12:15pm Cottenham Toy Library – Soft Play Session at Cottenham Community Centre (p9)

**Sat 21** Rampton Horse Show – Horse Show at Giant's Hill, Rampton (p29)

**Fri 27** 4–11pm Willingham Social Club – Beer Festival: *Live music, food, gin bar* (p41)

**Fri 27** 7:30–9pm Cottenham Gardeners Club – *Award Winning Plants – The Process of Trialling and Judging Them* by Tim Fuller, Horticulturalist at Franklin Gardens Community Room (p15)

**Sat 28** Willingham Gardening Club – Excursion: *Knebworth House and Park* (p43)

**Sat 28** noon–11pm Willingham Social Club – Beer Festival: *Live music, food, gin bar* (p41)

**Mon 30** 7:30pm Willingham Action Group – *Jam Night* with local musicians at Willingham Social Club (p39)

### OCTOBER

**Wed 2** 7:30pm Fen Edge Archaeology Group – *Excavating Medieval cemeteries in Cambridgeshire: the After the Plague project and rural/village sites* by Craig Cessford at Landbeach Village Hall

**Thu 3–Sat 5** Willingham Feast – Thurston's Funfair on Willingham Green (p39)

**Fri 4** 11:15am–12:15pm Cottenham Toy Library – Soft Play Session at Cottenham Community Centre (p9)

**Fri 4** 6–8pm Rampton Friday Club – Club Night at Rampton Village Hall (p27)

# THE STRAWBERRY 50

CYCLE EVENT



## SUNDAY 1ST SEPT 2019

- 55 mile ride starting and finishing in Histon or Gamlingay
- 28 mile ride starting and finishing in Histon

Register at [www.strawberry50.co.uk](http://www.strawberry50.co.uk)

55 MILE ROUTE  
ADDITIONAL  
START POINT:  
GAMLINGAY

ORGANISED BY



SPONSORED BY



LES WARD



# Cambridge **Open ART** 2019 Exhibition

100 Artists • 500 Artworks • 1 Weekend

IT IS ESTIMATED BY 2050 THERE  
WILL BE MORE PLASTIC



IN THE OCEAN BY WEIGHT  
THAN FISH

This year's Artist in Residence is Shane Swann

**Saturday 12th October 10am – 5pm**

**Sunday 13th 10am – 4pm**

**Preview Friday 11th 6.30pm – 9pm**

**Swavesey Village College**

**Gibraltar Lane**

**Swavesey • CB24 4RS**

Free Entry • Paintings, prints and cards to buy

Creative activities for children • Café • Free Parking

**More Info at [coax.org.uk](http://coax.org.uk)**

# FEN EDGE EVENTS DIARY

Continued from Page 5

## OCTOBER (CONTINUED)

**Sat 5** Willingham Feast – Wine-tasting quiz: organised by Willingham Wine Tasting Club at Willingham Social Club (p39)

**Sat 5–Sun 6** Willingham Feast – *Exhibition of work by Willingham Photography Club and Willingham Octagon Art Group*, held in the Public Hall and Library respectively (p39)

**Sun 6** Willingham Feast – Joint churches service at St Mary and All Saints, Willingham (p39)

**Mon 7** 7:30pm Willingham Gardening Club – *Life on the Edge* at Willingham Social Club (p43)

**Wed 9** 7:30pm Cottenham Women's Institute – Craft Evening at Cottenham Village College (p17)

**Fri 11** 7:45pm Willingham Social Club – Custard Comedy (p41)

**Fri 11** 7:45pm Cottenham Village Society – *Hearing Dogs for Deaf People* by Pam Harper at All Saints' Church Hall (p19)

**Fri 11–Sun 13** Fen Edge Footpath Group – Walking Weekend: *In the Lea Valley*, Contact [fenedge.footpathgroup@gmail.com](mailto:fenedge.footpathgroup@gmail.com)

**Fri 11** 7:30pm Cambridgeshire Bird Club – *Bird monitoring and studies in Thetford Forest* by Greg Conway at St John's Community Hall, Hills Road, Cambridge

**Mon 14** 7:30pm Willingham Women's Institute – *The Norris Museum* at Willingham Social Club (p43)

**Fri 18** 11:15am–12:15pm Cottenham Toy Library – Soft Play Session at Cottenham Community Centre (p9)

**Fri 18** 8pm Willingham Social Club – Free member's night: *Graham Buxton - live guitarist/singer* (p41)

**Sat 19** Fen Edge Footpath Group – Walk: *The old and the new* – 8 miles from Knapwell to Bar Hill, Contact [fenedge.footpathgroup@gmail.com](mailto:fenedge.footpathgroup@gmail.com)

**Fri 25** 7:30–9pm Cottenham Gardeners Club – *Pickwick's Gardening Scrapbook* by Mike Petty, Social Historian at Franklin Gardens Community Room (p15)

**Sat 26** 8pm Willingham Social Club – *Scooted 'n Booted* – live Ska band (p41)

**Sun 27** 2–4pm Cottenham Community Centre – Halloween party (p21)

**Thu 31** 5–6:30pm All Saints Church – *Messy Light Party* (p9)

## NOVEMBER

**Fri 1** 6–8pm Rampton Friday Club – Club Night at Rampton Village Hall (p27)

**Fri 1** 6–11pm Cottenham Primary School PTCA – Fireworks Night at Cottenham Primary School

**Sat 2** 11am–1 pm Willingham Parish Council – District Council Surgery at Ploughman Hall, West Fen Road, Willingham (p51)

**Mon 4** 7:30pm Willingham Gardening Club – *Raking up the past* at Willingham Social Club (p43)

**Fri 8** 7:30pm Cambridgeshire Bird Club – *Bird conservation and birding in Bangladesh* by Rob Sheldon at St John's Community Hall, Hills Road, Cambridge

**Fri 8** 8pm Willingham Social Club – *Jax & Co* – Johnny Cash Tribute band (p41)

**Sat 9** 10am–1 pm Landbeach Tithe Barn Trust – Outdoor Gym at Landbeach Tithe Barn (p25)

**Mon 11** 7:30pm Willingham Women's Institute – *All about Emmaus* at Willingham Social Club (p43)

**Wed 13** 7:30pm Cottenham Women's Institute – *Making a stand for Chelsea* by Dr Tim Wreghitt at Cottenham Village College (p17)

**Fri 15** 7:45pm Cottenham Village Society – *The Home Front in the Second World War* by Alison Giles at All Saints' Church Hall (p19)

**Fri 15** 11:15am–12:15pm Cottenham Toy Library – Soft Play Session at Cottenham Community Centre (p9)

**Sat 16** Fen Edge Footpath Group – 6 mile walk from Little Eversden, Contact [fenedge.footpathgroup@gmail.com](mailto:fenedge.footpathgroup@gmail.com)

**Sat 16** 8pm Willingham Social Club – *Soul and Motown Disco* (p41)

**Thu 21** Willingham Gardening Club – Excursion: *Christmas Shopping in Birmingham* (p43)

**Fri 22** 7:30pm Fen Edge Archaeology Group – *Medieval settlement and conflict on the fen-edge* by Duncan Wright at Rampton Village Hall

**Sat 23** 7:30pm Rampton Village Hall – Music: *An evening with Brooks Williams* (p27)

**Fri 29** 11:15am–12:15pm Cottenham Toy Library – Soft Play Session at Cottenham Community Centre (p9)

**Fri 29** 7:30–9pm Cottenham Gardeners Club – *A Cottager's Christmas* by Andrew Sankey, Horticulturalist at Franklin Gardens Community Room (p15)



# **INDEPENDENT FINANCIAL ADVICE IS BEST**

**Free Consultation. No obligation.**

**That's the understanding when you talk to Nigel Bolitho about how to make your finances work to your best advantage. Get the benefit of his wide experience in all investment matters**

**Pensions   Savings   Investments  
Protection   Tax Avoidance**

**For sound, independent advice on all your investment plans, talk to Nigel Bolitho**

**FREE CONSULTATION  
NO OBLIGATION**



**Mitchell House, High Street, Cottenham  
Tel: (01954) 251521**

**Email: [ncfb007@gmail.com](mailto:ncfb007@gmail.com)  
web: [www.bvmoney.com](http://www.bvmoney.com)**



**Authorised and regulated by the Financial Conduct Authority**

# FECA IN COTTENHAM

## ALL SAINTS' CHURCH COTTENHAM

*A church for everyone and open to all*

Update! It's official. We're now registered as an 'inclusive church,' which means we believe in church that "does not discriminate, on any level, on grounds of economic power, gender, mental health, physical ability, race or sexuality. We believe in Church that welcomes and serves all people in the name of Jesus Christ; that is scripturally faithful; that seeks to proclaim the Gospel afresh for each generation; and that, in the power of the Holy Spirit, allows all people to grasp how wide and long and high and deep is the love of Jesus Christ."



provide a fantastic environment for parents and carers to engage with other families from the local community. Sessions run from 11.15am–12.15pm. There is no need to book in advance. Costs are as follows: £2 per child; £1 per child under 1; Babies in arms are free; or £3 per family. We ask that children and adults wear socks while using the soft play equipment and no food or drink be consumed on the equipment. Refreshments can be purchased from the coffee shop next door and consumed in the soft play room on the seats that surround the equipment. Children are welcome to bring their own drinks along in a beaker with a lid to avoid spillages. Dates for the autumn term are: **6 & 20 September; 4 & 18 October; 1, 15 & 29 November; 13 December** (Christmas Party).

Did you know that you can hire our fantastic toys for your own use? Go to [cottenhamtoylibrary.co.uk](http://cottenhamtoylibrary.co.uk) to enquire.

## THE COTTENHAM CLUB

The Cottenham Club is a great venue for parties, open every Friday evening from 7.30pm. Membership is cheap and provides discounted entry to most events. After six months membership, members receive a hire discount. We have a snooker table, darts, annual motor bike show, regular bands, monthly bingo, cheap bar and are family friendly. Please come along and have a look for yourselves.

### Events

**Saturday 10 August** – School Disco: Mix of 1970s, 80s and 90s music. Members £3, non-members £5

**Saturday 17 August** – Sealy's Vinyl Sound Show: Motown, Ska, Soul, Reggae. Members £3, non-members £5

**Friday 13 December** – Scooted'n'Booted: Live Ska Band. Members £5, non-members £7

All of these events are ticket entry, tickets can be purchased any Friday evening at the Club.

Our events are all listed on The Cottenham Club Facebook page [www.facebook.com/thecottenhamclub](http://www.facebook.com/thecottenhamclub)  
Address: 198 High Street, Cottenham, Cambs CB24 8RX



Following the successful launch of Messy Church in Cottenham at Easter we will continue to welcome everyone to the next exciting sessions this year!

**Saturday 7 September** – Messy Harvest 3.30–5.30pm

**Thursday 31 October** – Messy Light Party 5pm–6.30pm

**Saturday 14 December** – Messy Christmas 3.30–5.30pm

## COTTENHAM BAPTIST CHURCH

**Sunday Breakfast** – Get Sunday started with breakfast and fresh coffee, take part in an activity while you eat, and finish with a 15 minute thought and song to focus your day.

First Sunday of every month at Cottenham Baptist Church, 10.30am.

## COTTENHAM TOY LIBRARY SOFT PLAY SESSIONS

We run soft play sessions for under 5s at Cottenham Community Centre every other Friday during term time. These fun sessions provide a safe and colourful environment for babies and children to develop their movement and communication skills. Other benefits include improving balance, coordination and a chance to interact with children of a similar age. These sessions also



# K & S Services



- All aspects of Carpentry & Joinery
- Kitchen Fitting
- Bathroom Refits
- Wall & Floor Tiling
- Laminate & Wood Flooring
- Internal / External Painting & Decorating
- Fencing
- Heating Systems

## Free Quotations - Quality Work Guaranteed

Kevinwhitby1967@gmail.com

Tel: 01954 200969

Mob: 07549 983817

## Cottenham Computers

# 01954 593025

Call the experts for good honest advice

With over 16 years experience it is likely we have seen your problem before. We are happy to advise you free over the phone..

**We don't charge a fortune**

**So give us a call TODAY! We won't bite!**

**We will come to your home or business to fix your computer**

### Got any of these issues?

- ✓ Computer crashing
- ✓ Network Wi-Fi connection Issues
- ✓ Computer infected with viruses
- ✓ Windows won't boot
- ✓ Can't access your email
- ✓ Can't access the Internet
- ✓ Computer running very slow

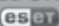
### Services

- ✓ PC & Laptop Repairs & Upgrades
- ✓ Macbook & iMac Repairs & Upgrades
- ✓ Broadband / Wi-Fi Installations
- ✓ Full Hardware Diagnosis
- ✓ Hard Drive Data Recovery
- ✓ Supply New PCs & Laptops
- ✓ 3 Years Hardware Warranty on New PCs

**Working all day? Then we can collect and deliver FREE to and from your work place\***

\* Within 10Miles of Cottenham

**We cover Cottenham & surrounding towns & villages**

Authorised UK  
Partner 

*For all computer related problems give us a ring!*

**www.cottenhamcomputers.co.uk**



Microsoft



# FECA IN COTTENHAM



## COTTENHAM TENNIS CLUB

The last few months have been very active for the tennis club. We have been lucky with the weather and have managed to play throughout the spring and early summer. We ran an open event and tombola at the Cottenham Fun Run in May and got a few people playing. Then we participated in an LTA sponsored Play Tennis for Free day on 19 May. This was held at the Recreation Ground on Cottenham's newly prepared grass courts. Many thanks to the Parish Council for their support with this, and to the groundsman for all his hard work. The day was a great success with 45 children and 15 adults turning up for free coaching provided by Over and In and one of our own club coaches, Rory Dixon.

The grass courts at the Rec are available to play on by all members of the public until September, as long as it's dry. Access is free at any time. Call or email the Parish Clerk on 07503 328401 or [clerk@cottenhampc.org.uk](mailto:clerk@cottenhampc.org.uk) Mon-Fri 9am-2.30pm for the padlock code, which changes at the start of each month.

During the summer holidays the **courts at Cottenham Sports Centre will be open** from 2.30pm Monday–Thursday and from 4 pm on Friday. Cost £2.50 an hour for club members and £4-6 for non-members. Do make use of these extended opening times.

We have seen a steady increase in our membership and now have enough ladies to field a team in the Cambridgeshire LTA leagues. This has been with mixed results so far — 2 draws at 4 sets all, one loss

8 sets to nil, and one loss 6 sets to 2. The last one being against a team of children from Buckden, and to be honest we were grateful to come away with 2 sets, they were seriously good! The men have had more success; they won their league last year and moved up from 7th to 6th league. So far, they are top of this league with wins against Foxton, Bury St Edmunds, Royston and Chatteris. The mixed leagues start next month and hopefully the men's success will rub off on the ladies in these games.

Social play is on **Wednesday and Thursday evenings**, with good attendance using all 4 courts at Cottenham Sports Centre.

Coaching continues on **Saturday afternoon (adults) and Sunday mornings (juniors)**. The Rusty Racquets session on Wednesday evenings (adults) and Thursdays (juniors) have proved popular, thanks to our excellent in-house coaches Rory Dixon and Alec Davies. These sessions give an opportunity for those a little out of practice or new to the game to give it a go.

We are always keen to welcome new members, whatever your level. So why not come and try it? If nothing else you can enjoy a drink and maybe a pizza with us at the Chequers afterwards.

For any budding coaches out there, or teenagers interested in a career in sports, there is sponsorship available for 16 and 17 year olds to undertake tennis coaching courses, which could be a useful qualification.

Contact [info@cottenhamtennis.co.uk](mailto:info@cottenhamtennis.co.uk), [cottenhamtennis.co.uk](http://cottenhamtennis.co.uk) or phone Louise Cooke on 07841 573490.



# GIFT VOUCHERS

A PERFECT GIFT FOR FAMILY OR FRIENDS



TRAVEL BACK TO THE GOLDEN AGE  
OF LUXURY RAIL TRAVEL AND  
INDULGE IN AN AFTERNOON TEA

01954 233279 [www.carriagesofcambridge.co.uk](http://www.carriagesofcambridge.co.uk)

Carriages of Cambridge, Capability Barns, Huntingdon Road, Fen Drayton, CB24 4SD [f](#) [i](#) [t](#)

© Copyright 2018 Carriages of Cambridge. Poster design by www.pinterest.com

# FECA IN COTTENHAM

## COTTENHAM UNITED FOOTBALL CLUB

The 2019/20 local football season is just around the corner and Cottenham United FC pre-season training is well under way. The Club has two senior men's teams, playing in the Cambridgeshire FA Kershaw Senior A League (1st team) and the Mead Plant & Grab 3B League (Reserves). Our home matches are played on Saturdays at the Recreation Ground.

We hold training sessions on Tuesdays and Thursdays at 6.45pm on the grass field behind Cottenham Village College. All are welcome and you can be assured of a warm and encouraging reception. In mid-August, training will change to once per week on Wednesdays, same venue and time and then ultimately, in October, to the 3G floodlit pitch adjacent to the grass field.

We are ambitious and keen to progress. If you are interested in joining us, please contact our Chairman, Ian Stuchbury ([shirley.stuchbury@gmail.com](mailto:shirley.stuchbury@gmail.com), 07771 882182) or our Secretary, Jason Stuchbury ([jason.stuchbury@hotmail.co.uk](mailto:jason.stuchbury@hotmail.co.uk), 07922 177466).

Website: [www.pitchero.com/clubs/cottenhamunited](http://www.pitchero.com/clubs/cottenhamunited)

## COTTENHAM BOWLS CLUB

The outdoor bowls season is nearly over. On 8 June Cottenham Bowls Club held an Open Triples Competition. There were 20 teams, of 3 players, each playing 4 games of 6 ends to battle for a semi-final place followed by a final. The top 4 teams all won prizes. It was a full day of bowls and refreshments.

In October it is the start of the Indoor Short Mat Season, which goes through until early April. If you are interested in playing short mat bowls you can contact Eric Hobbs. There is a membership fee of £15, no extra cost and just 50p for tea and biscuits. It is a good way to spend the winter months.

Cottenham Bowls Club is a very friendly club with members from Cottenham and surrounding villages—come and give us a try. Everyone is welcome. Contact: Dave Parrack 01954 230732, Eric Hobbs 01954 251956 or Christine Forster 01954 200720

## Avenue

Property Management

### Quality Property Rental Service

A local, personal & professional approach to all aspects of property management & letting in your area

We provide a friendly & efficient service to Landlords & Tenants including property maintenance & repairs and comprehensive tenant referencing

25 years' property experience

We look forward to hearing from you for an informal chat

Tel: 01223 353 353 or 01354 691 560  
[enquiries@avenue-properties.co.uk](http://enquiries@avenue-properties.co.uk)

## JASON KIRBY

*Professional Painting  
& Decorating Ltd*

*A Professional Service  
from Start to Finish*

Tel: 01954 211775  
[www.jasonkirbyltd.co.uk](http://www.jasonkirbyltd.co.uk)







# Cambridge Classics

Wooden  
Double Glazed  
Windows, Doors  
& Shutters



Energy Efficient - Accoya Wood Options



REPAIR CARE

FENSA

Transforming your house into a home

## 01223 491910

[www.cambridgeclassics.co.uk](http://www.cambridgeclassics.co.uk)



# FECA IN COTTENHAM



## COTTENHAM CRICKET CLUB

Cottenham Cricket Club is one of the oldest Cricket Clubs in the county—167 years and counting! We run two senior men's teams in the Cambridgeshire Cricket Association Senior 3 League (1<sup>st</sup> XI) and Junior 4 North League (2<sup>nd</sup> XI). We play our home matches on the Recreation Ground off Lambs Lane.

As you read this, the current season is well into its third month finishing at the end of August. There's still time to come along and join us for the remainder of this season. Our juniors have completed their fixtures (which run in school term-time). Hopefully they really enjoyed their cricket and continued to develop their skills.

Our midweek net sessions at the back of Cottenham Village College (Tuesdays, 6.30pm) are still ongoing so don't hesitate to come down and join in. We're an extremely friendly bunch and you will have a very warm welcome. Our club facilities are excellent. Contact us or pop down to the Recreation Ground any Saturday to have a look and a chat. We would be delighted to see you.

Contacts: [cottenhamcc@yahoo.co.uk](mailto:cottenhamcc@yahoo.co.uk),  
Secretary: David Chaplin (01954 250075),  
Chairman: Ralph Lamble (07740 195947), Vice  
Chairman: Dave Partridge (01954 203210),  
Junior Teams Coordinators: Dave Partridge and  
Alan Raven (01954 250388). Website:  
[www.cottenham.play-cricket.com](http://www.cottenham.play-cricket.com)

## COTTENHAM GARDENERS' CLUB

Cottenham Gardeners' Club meets at Franklin Gardens Community Room, usually on the last Friday of the month. Refreshments are served from 7.30pm, followed by a talk at 7.45pm, and closing with a raffle. From September, half-price membership is available for £7, lasting until February. Guests and visitors are welcome to try a single meeting for £2.

In August there is no regular meeting, but we have our Evening Drinks Party in the garden of Jean and Trevor Lawrence on **Friday 9 August**, from 6.30 pm.

On **Sunday 8 September** we have a coach trip to RHS Wisley. Wisley has seen many changes recently, and their new visitor centre will be open. It will be the last day of the annual Wisley Flower Show, with plenty of nurseries displaying their wares. The cost of the trip is £20 for members and £22 for others. Pick-up points are in Wilburton and Cottenham.

On **Friday 27 September**, Tim Fuller (Horticulturalist) will talk on Award Winning Plants – The Process of Trialling and Judging Them.

On **Friday 25 October**, Mike Petty (Social Historian) will talk on Pickwick's Gardening Scrapbook.

On **Friday 29 November**, Andrew Sankey (Horticulturalist) will talk about A Cottager's Christmas. Our archives show that our club was originally called Cottenham and Rampton Gardeners Club. We would indeed welcome people from other villages, particularly if you have no gardening club of your own.

For any further information please contact Sarah Dumont, 01954 260482.



Mickey Bendalock



## **CAMBSWATERBEACH.COM DRIVING TUITION**

*Friendly expert tuition with a DSA approved instructor  
Beginner, advanced, pass plus and intensive  
Foreign licence holders welcome  
[cambswaterbeach@hotmail.co.uk](mailto:cambswaterbeach@hotmail.co.uk)*

**Tel: 01223 440431  
Mob: 07779 823680**



**CAMBRIDGE'S HIGHEST PASS RATE**

## **IMPINGTON ROOFING SERVICES LTD**

### **ALL ASPECTS OF ROOFING**

DOMESTIC, COMMERCIAL,  
GRANT WORK UNDERTAKEN,  
COLLEGES & UNIVERSITIES

#### **NEW ROOFS - RE-ROOFS - REPAIRS**

- Slates • Tiles • Felt • Commercial Roof Sheeting
- Chimney Rebuilding & Re-pointing
- Guttering • Leadwork • uPVC Cladding



**ALL WORK GUARANTEED • FREE ESTIMATES  
HIGHLY COMPETITIVE PRICES  
PROMPT, RELIABLE, PROFESSIONAL SERVICE  
INSURANCE BACKED GUARANTEES  
COMMERCIAL ROOF SHEETING & CLADDING**

**(01223) 441852** **MOBILE: 07836 296012**

Unit 6, Convent Drive Ind Est, Waterbeach, Cambridge CB5 9QT

01223-441847 (FAX)

[www.impington-roofing.co.uk](http://www.impington-roofing.co.uk)



# FECA IN COTTENHAM

## COTTENHAM WOMEN'S INSTITUTE

On **Wednesday 7 August** 2pm-4pm you are warmly invited to come and have a natter over some tea and cake at the Cottenham Club Lambs Lane.

From September we return to our usual meeting place of the Tony Cooper Suite at CVC. We meet at 7.30pm and you are welcome to join us. There will be a small charge of £3 at a meeting where there is a speaker.

On **Wednesday 11 September** Sally Crawley will talk about Memory Strategies and Phobias.

**Wednesday 9 October** is a craft evening where members share their skills. There will be several crafts on display and members may move freely around to explore these and try them out.

On **Wednesday 13 November** Dr Tim Wreghitt will talk about his experiences at the Chelsea Flower Show – Making a stand for Chelsea.

**Wednesday 11 December** is our Christmas party with entertainment from 'Hi 5'.

Contact: Margaret 01954 250870.

## COTTENHAM LIBRARY SUMMER READING CHALLENGE

*In a library (not so) far far away...* Get ready for an out of this world adventure with Space Chase. Prepare for lift off as we travel across the galaxy on a very special reading mission: it's the Summer Reading Challenge 2019!

Meet the Rockets! This super cool family lives on a satellite station in space. They love spending time at their local library on the Moon.

But wait! All of a sudden books have started to disappear from the Moon Library, and soon there won't be any left. A mysterious ship has been spotted on the radar – could these naughty aliens be behind the trouble at the library?

The Rockets are going on a very important mission to save the missing books from these alien bandits, and they need your help! Take part in the Summer Reading Challenge and join the Rockets on a chase through space to find the aliens and save the Moon Library.

**Taking part in the Challenge** is simple – pop along to the library with your children and we'll sign them up. The challenge is open during the school summer holiday.

For more information, pop into the library and staff

will be only too happy to explain the scheme further or to answer any questions you may have.

Each participant will receive their very own Space Chase mission folder to get them started. Read six library books (or more!) over the holidays to collect special stickers to add to their folder.

Collect all the stickers to find the aliens, save the missing books and complete the Challenge. If they do complete the challenge, they'll be invited to a special awards ceremony in September.

So, grab their space suit and take a giant leap into the library this summer! (Dressing up optional!)

The Summer Reading Challenge will also take place at Waterbeach and Willingham Libraries.

Thank you for supporting your local library!

## COTTENHAM CARECAR

*What is it like to be a volunteer driver for Cottenham Carecar?*

All you need is a fully insured car and an hour or so occasionally to use to help other villagers who find it hard to get about, at times to suit you.

Once accepted, you receive a "wish-list" from the coordinator (by email or telephone) every week regarding jobs available in the following week.

From this you pick which jobs you can do. There is no fixed commitment.

When you have accepted a job, or jobs, you are then in charge. You turn up on the day at the pick-up address, meet your client, and take him or her to their destination.

You are entitled, under HMRC rules to 45p per mile from your home and back. Part of this fee is paid by your passenger on the day and part funded by Cambridgeshire County Council quarterly. This income is not taxable.

The only paperwork is the claim form for the County Council, quarterly.

You will make a lot of new appreciative friends and go to many interesting places in Cambridgeshire. It is not all doctors and hospitals—50% of the jobs are social, such as shopping trips, reunions, visiting friends and relatives.

So, if you want to know more, call Cottenham Carecar 01954 251 929 or email [carecar@pobroadband.co.uk](mailto:carecar@pobroadband.co.uk).

*Cottenham Carecar is a Social Car Scheme run in association with Cambridgeshire County Council*

# PEST PROBLEM?

07836 245670  
01954 230708

LOCAL, PROFESSIONAL, TRUSTED

Rapid, qualified & safe **pest control** services for local residents, farms, commercial premises, schools, hotels & businesses.

We effectively control **rats, mice, rabbits, ants, fleas, cockroaches, wasps & moles.**

If you are looking for **one off, emergency or long-term** pest management solutions, contact DRE Pest Control.



19 WALLMANS LANE  
SWAVESEY  
CAMBRIDGE  
CB24 4QY



[www.drepestcontrol.co.uk](http://www.drepestcontrol.co.uk)



- + HANDYMAN SERVICE
- + PROPERTY MAINTENANCES
- + GARDEN MAINTENANCE
- + 24HR EMERGENCY CALL OUTS
- + RUBBISH CLEARANCE
- + SHEDS AND FENCING

07824 312732

[WWW.BRIDGEMANMAINTENANCE.COM](http://WWW.BRIDGEMANMAINTENANCE.COM)

[JULIAN@BRIDGEMANMAINTENANCE.COM](mailto:JULIAN@BRIDGEMANMAINTENANCE.COM)



- ◆  
Manicures/Pedicures
- ◆  
Gel Polish
- ◆  
Acrylic Extensions
- ◆  
Nail Art

Qualified, insured and experienced Nail Artist,  
providing elegant, long lasting nail services.  
Unique and custom design sets available.

Tel: 07523 860015

Email: [glittertipsdesign@gmail.com](mailto:glittertipsdesign@gmail.com)

Find us on Facebook & Instagram

Located close to The Green in Cottenham, with ample Parking!

# FECA IN COTTENHAM

## COTTENHAM THEATRE WORKSHOP

Cottenham Theatre Workshop is delighted to announce *Sleeping Beauty* a classic Christmas pantomime!

Following on from a terrific outing for our Spring Production *A Separate Peace/The Real Inspector Hound*, we've decided to go 'back to basics' this year and perform a traditional panto, with all the usual suspects and gags aplenty!

The story of *Sleeping Beauty* is a timeless one. A princess has a curse placed on her so that she will fall asleep for 100 years and she can only be awoken by a kiss from her true love. We're staying true to this story, but we've got some twists and turns along the way. Throw in a charming Dame, two silly sidekicks and a terrifying villain and you've got a great show!

The show will run from **Wednesday 4 December** to **Saturday 7 December** at Cottenham Village College.

Weekday performances begin at 7.30pm and there are two performances on **Saturday 7 December**, a matinee showing at 1 pm and an evening showing at 5.30pm.

Tickets will be available towards the end of October on our website or via our third party provider Ticketsource by calling 0333 666 4466 (additional booking fee applies).

Although the parts have been cast, we'd still love to see some new chorus members to join our team! Full rehearsals will start at the beginning of September. Finally, you don't just have to be on stage to be a part of CTW, we're always looking for new volunteers in our backstage and front of house teams.

Contact: [cottenhamtheatre@gmail.com](mailto:cottenhamtheatre@gmail.com) or visit [www.cottenhamtheatre.com](http://www.cottenhamtheatre.com). Also follow us on our social media channels on Facebook and Twitter!

We hope to see many of you at the performances - enjoy the show!

## COTTENHAM VILLAGE SOCIETY

### *Why Were There So Many Public Houses in Cottenham?*

In 1869 Cottenham had 34 public houses supporting a population of 2,414. 20 were licensed to sell beer and spirits and 14 holding a beer only licence [\*]. This was not unique to Cottenham. Why did this happen and how did it decline? In a village, a pub is very often the focal point of a community. There were Roman taverns, Anglo Saxon ale houses and later pubs described by Pepys as being the heart of England. After the Glorious Revolution of 1688 and the introduction of gin to England by the Dutch, the Government allowed unlicensed gin production and by 1740 the production of cheap gin ("mother's ruin") was six times more than the production of beer. To combat drunkenness the Government imposed the Gin Act of 1751, forcing gin distillers to sell only to licensed retailers. In the early 1800's, to encourage people to drink the less harmful beer, the Beer Act of 1830 was introduced. This legislation allowed an ordinary householder to sell beer with a licence that cost only 2 guineas, resulting over the next 8 years in an increase of pubs to 46,000.

By 1869 the growth of beer houses had to be checked – leading to ineffective laws making it harder to obtain a licence. In 1908 Prime Minister Asquith took the lead and proposed to close one third of the



Lord Nelson Pub High Street

then 100,000 pubs in England and Wales. Stiff new taxes on pubs had reduced beer consumption by 50% by 1920.

With the Defence of the Realm Act of 1914, opening times for pubs were restricted to 12 noon to 2.30 pm, and 6.30 pm to 9.30 pm, which were firmly enforced by the police. Also under this act a scheme was introduced whereby a landlord could give up his licence, close his pub and be paid compensation. Many of the pubs in Cottenham closed under this scheme.

[\*]: *A History of Cottenham's Inns and Hostelries* by Francis Garrett, published by Cottenham Village Society

# LANDART

LANDSCAPE CONTRACTORS LTD

*Designers & Builders of Award  
Winning Gardens*

*HTA/APL National Award Winners 2002 & 2003*

01954 261412

LANDART

Coldharbour Farm, Over Road  
Willingham, Cambridge CB24 5EY  
[www.landart.uk.com](http://www.landart.uk.com)



**JW PLUMBING AND HEATING**

**Tel 07494 474136**

Email [jaywplumbingandheating@gmail.com](mailto:jaywplumbingandheating@gmail.com)

All aspects of plumbing and heating work undertaken

Boiler servicing/repairs

Landlord's Gas safety checks

Boiler replacements

General plumbing



## GUITAR/UKULELE & PIANO LESSONS



Learn how to play any of these instruments in just a few easy lessons.

**ALL STYLES CATERED FOR**

(From Bach to Boogie, Country to  
Classical/Rock/Pop & Blues)

**EXPERIENCED TEACHER**

(Member of the Registry of Guitar Tutors)

**Contact Helen on:**

**07798 526084**

or visit [www.guitarlessons-cambridge.co.uk](http://www.guitarlessons-cambridge.co.uk)



# FECA IN COTTENHAM

## COTTENHAM COMMUNITY LAND TRUST

*Locally-affordable homes for Cottenham – vision or nightmare?*

Many households in Cottenham have middle incomes, which are neither low enough to qualify for social housing nor high enough to afford a mortgage on any of the new houses being built along Oakington and Rampton Roads. Some of these households are formed around people who were born and bred in Cottenham but can no longer afford to live here as purchase and rental prices increase. The Neighbourhood Plan research shows that there are about 100 families with household incomes above the level where they are entitled to state-subsidised accommodation. They want to live here but are unable to afford a so-called affordable home. Cottenham Community Land Trust has been founded to build homes that can be afforded by these local people and ensure they remain available to local people forever. A “not for profit” developer, like the Cottenham Community Land Trust, working with socially-conscious landowners initially aims to build 30 houses, with 24 of those priced to be affordable by local people on local incomes. This is the dream. We have obtained grant-funding to work with an architect to develop small schemes to take to



planning permission in the coming months. Learn more at [www.cottenhamclt.org.uk](http://www.cottenhamclt.org.uk) or [www.cottenhampc.org.uk/neighbourhood-plan](http://www.cottenhampc.org.uk/neighbourhood-plan) or follow Cottenham Community Land Trust on Facebook. You can also help us realise the dream by becoming a life member for just £1, for which you will be kept informed of progress regularly and have the opportunity to influence the direction of the Trust. Of course, benevolent landowners are particularly welcome.

Contact: [Chair@cottenhamclt.org.uk](mailto:Chair@cottenhamclt.org.uk)

## COTTENHAM CONNECTED

*A Sunday Social event to bring Cottenham residents together*  
Cottenham



Connected is in the process of being set up by Sustainable Cottenham and Care Network. We have submitted a funding bid to help get our initiative ‘off the ground’.

We want to bring people together, build networks and move our community towards self-reliance and resilience. We hope to provide a regular skillshare event; a coffee morning and village-wide opportunities to recycle not only our own personal skills but also our rubbish.

Our first event will be held on **Sunday 15 September 2–4pm** at The British Legion Hall, on the High Street, Cottenham. Please do join us. If you are interested in finding out more, or fancy joining the team who organise these events, please email us at [cottenhamconnected@sustainablecottenham.org.uk](mailto:cottenhamconnected@sustainablecottenham.org.uk)



**The Complete Gas Heating and Plumbing Company**

**Plumbing • Heating • Gas • Bathrooms  
Water Softeners • Property Maintenance**

Tel: 01954 204044 • Web: [www.entiregroup.co.uk](http://www.entiregroup.co.uk)  
Email: [service@entiregroup.co.uk](mailto:service@entiregroup.co.uk)

Elstree House  
Watson's Yard  
High Street  
Cottenham  
CB24 8RX

Tel: 01954 250280  
Email: [enquiries@mhhp.co.uk](mailto:enquiries@mhhp.co.uk)

# MHH

THE MHH PARTNERSHIP  
Chartered Certified Accountants

We provide a professional, friendly service to small and medium sized businesses, including the following. Please call us for a free initial consultation.

- Year End Accounts
- Self Assessment Tax Returns
- Business and Personal Taxation
- Limited Company Accounts
- Management Accounting
- Payroll
- Budgets and Bank Presentations
- Monthly Book-keeping and VAT
- General Business Advice

Partners: Michael Hawes FCCA • Helen Hawes FMAAT

# King & Co Solicitors

238 High Street Cottenham  
Cambridge CB24 8RZ  
Tel: 01954 251818

Open:  
Mon-Thurs  
9.00am - 5.00pm  
Fri 9.00am - 4.00pm

CAR PARK AT OFFICE  
FREE VERBAL OR WRITTEN QUOTATIONS GIVEN  
OFFICES IN CENTRAL  
CAMBRIDGE AS WELL



## Cottenham Community Centre

I hope that you managed to visit one or more of the many performances during the Fen Edge Festival or enjoyed a coffee shop scone at the wonderful *Tea on the Green* event run by the Cottenham Day Centre. Do come and enjoy another fantastic scone, cake or lunch on a subsequent occasion. Invite your friends or come alone – you are likely to see someone you know. The artwork hanging on the walls is changed regularly for you to admire or even purchase

### Normal Coffee Shop opening times are

10am–4.30pm Monday and Wednesday; 10am–2pm Tuesday, Thursday, Friday and Saturday (except Bank Holidays, Christmas and this year 12–27 August inclusive). Following the fitting of the new kitchen last year, the hall floor will be sanded and sealed this summer probably 12–15 August which will necessitate closure of the hall for several days.

This year, to celebrate ten years of charity status, membership costs just £10 for an individual (unless you are a regular hirer). To join and receive a free beverage after 10 drinks bought and a 10% discount on room hire, download a membership form at [www.cottenhamcc.org/membership](http://www.cottenhamcc.org/membership) or maybe consider becoming a trustee yourself – we would welcome some new trustees to help manage the facilities.

For details of our many classes on each day and evening, see Classes on our website [www.cottenhamcc.org/classes](http://www.cottenhamcc.org/classes) (where you will find times and contact details) or under Function Rooms, then refer to the room (hall, studio or coffee shop) booking calendars. Most classes have spaces. *Music and Movement* is moving from Thursday mornings to Mondays at 2pm starting from 9 September and there is a special on Wednesday 31 July at 1 pm. If you are interested in Post-natal yoga please contact Lisa at [szramowski.lisa@gmail.com](mailto:szramowski.lisa@gmail.com) who is looking to start a class.

### CCC organised activities

**Little Humpbugs** (singing and music for babies and toddlers) fortnightly on Wednesdays at 10am from 11 September and a special on 28 August.

**CCC Knitting group** in the coffee shop on Wednesdays – just come along and enjoy helping others.

**Dads Play** 10.30–11.30 (2nd Saturday of month);

**Arts Night** in the coffee shop, 7.30–9.30pm (2<sup>nd</sup> and 4<sup>th</sup> Sundays); The Roost (in the coffee shop and main hall 3rd Sunday) 3.00–4.30pm; **Community Cinema** usually the first Sunday of the month at 7.30pm and sometimes, for families, 2.30pm.

Information from website: [www.revcoffee.net](http://www.revcoffee.net) or [www.facebook.com/CottenhamCommunityCinema](http://www.facebook.com/CottenhamCommunityCinema)

**Volunteers wanted**–Become part of the team at the coffee shop, meet people and improve your skills. Weekly or less regular volunteers welcomed. Come and have a chat with Jane, our manager Tel: 01954 202109 or [manager@cottenhamcc.org](mailto:manager@cottenhamcc.org)

**Room Hire**–There are three rooms (main hall, studio, coffee shop) for hire for running a class, activity, exhibition or party. The hall has air conditioning. Full food catering and/or a bar can be provided. The hall is also great for businesses to use for training or meetings. Full entertainment licence held.

Do you have an occasion to celebrate coming up? Our wonderful new back kitchen facilities are great for a party or pop up café.

We charge for using these facilities, but we are keen to encourage community activities and would be flexible towards organisations looking to try out new community projects.

### Events

Repair Café one Saturday (TBD) 10am–2pm in the autumn

**Sunday 27 October** 2–4pm Halloween party

**Saturday 7 December** at 11am Singing for Fun in the coffee shop (TBD)

**Thursday 19 December** early evening Mulled wine and mince pies with Tyranno Chorus

See the website or email [smithmichaelstanley@hotmail.com](mailto:smithmichaelstanley@hotmail.com)

[www.cottenhamcc.org](http://www.cottenhamcc.org) Charity Number 1128604



**01223 832 928**  
**www.Rothwells.biz**

## **Carpet Cleaning**

### **Stone Floor, Upholstery & Rug Cleaning.**

*A few points that make us stand out from the others,*

Rothwell's has been in business since 1993.

We're an honest local family firm.

Our large truck mounted machines mean more cleaning  
& drying power for the best results possible.

Members of both the NCCA and TACCA.

We will move the furniture for a thorough clean.

100% satisfaction or it's FREE.

*Call Oliver and Max Campbell for expert help today.*

Rothwell's, Malting End, Kirtling, Newmarket, CB8 9HH



## **Domestic, Commercial, Industrial & Agricultural**

**Electrical installations, Repairs, Inspection & Testing**

*Professional service & free estimates*

Office

**01223 430430**

Mobile

**07836 780620**

E-mail

Enquiries@cambridge-electrical.co.uk

Website

www.cambridge-electrical.co.uk





# FECA IN LANDBEACH

## LANDBEACH TITHE BARN

**Romeo & Juliet & Angie!**

The Tithe Barn Trust welcomed nearly one hundred visitors to the Tithe Barn, in Landbeach near Cambridge, on the evening of 20 June to watch 'Romeo & Juliet & Angie!'

After the success of 'A Midsummer Night's Dream' last year at this historic Tithe Barn, the Cambridge School of Visual & Performing Arts (CSVPA) returned to present this adaptation of one of Shakespeare's most beloved and famous tragedies. Director Chris

**Tithe  
Barn  
Trust**



*Romeo and Angie*

Mckay of CSVPA says "It was our pleasure to present this turbo charged, much abbreviated version of Romeo and Juliet, showcasing one student in particular ('Angie' Ziqi Huang) who will be joining us again next year for our foundation course. We performed this play with a cast of only three actors, Angie, myself, and following my cameo in last year's production, I gleefully introduced Rachel Ellis, head of our drama program, into the cast!"

## Have you got involved in the Tithe Barn project yet?

The Tithe Barn Trust believes the medieval Tithe Barn, in Landbeach, with thatched roof, brick threshing floor and timber granary, to be unique to Cambridgeshire and even of national significance. It is one of the few Tithe Barns in the country still standing next to its

medieval rectory. Sadly, the Landbeach Tithe Barn is in a poor condition and deteriorating.

4 Ways you can get involved in the Tithe Barn project:

- 1) Make a donation today at [www.totalgiving.co.uk/mypage/TitheBarnTrust](http://www.totalgiving.co.uk/mypage/TitheBarnTrust);
- 2) Become a Friend. Visit [www.tithebarntrust.org.uk/become-a-member/](http://www.tithebarntrust.org.uk/become-a-member/);
- 3) Volunteer. Email [tithebarntrust@gmail.com](mailto:tithebarntrust@gmail.com) to find out more;
- 4) Visit the Tithe Barn and come along to one of our next events.

## Upcoming Tithe Barn Events

**Saturday 14 September** – Heritage Open Day, 1-5pm. See this unique medieval timber frame Grade II listed Tithe Barn for yourself. Find out more about the Tithe Barn project and how through 'People power' volunteers are coming together to save this historic building for everyone.

**Saturday 9 November** – Outdoor Gym, 10am-1pm. Get active and involved and help us tidy the hedge and meadow strip to the Tithe Barn. The session will be led by our very own Landscape Architect and Horticulturalist.



*Outdoor Gym*

**How to find the Tithe Barn** – The gate entrance is opposite No 2 Waterbeach Road, Landbeach, Cambridge, CB25 9FA. Walk along the uneven grass track. Free road parking or infrequent no. 9 Stagecoach or Citi Bus no.2 to Landbeach. Regular no.9 service to Waterbeach, then 1.1 mile walk.

# Oasis Nursery

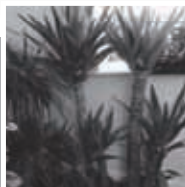
## LARGE RANGE OF QUALITY PLANTS ON SALE

HOUSE PLANTS – OFFICE PLANTS – OUTDOOR PLANTS

Palms – Shrubs – Perennials – Bedding

Exotics – Topiary – Bays – Herbs – Olive Trees

Hedging – Grasses – Bamboo – Compost



178 STATION ROAD, WILLINGHAM, CB24 5HG

TEL: 07773 887501

WWW.OASISNURSERY.CO.UK



# PEASGOOD & SKEATES



THE FAMILY FUNERAL SERVICE  
EST 1847

617 Newmarket Rd  
**CAMBRIDGE**  
**(01223) 415255**

*ample free parking  
on the premises*

Offices also at Saffron Walden  
Duxford and Haverhill

Personal care and attention  
24 hours a day,  
by local, qualified staff

Free professional bereavement  
support available to all our  
clients



Golden Charter  
Later Life Planning



**www.peasgoodandskeates.co.uk**

# FECA IN RAMPTON

## RAMPTON VILLAGE HALL

Rampton Village Hall gets WiFi and a letterbox!  
Rampton's village hall is used almost on a daily basis by a wide variety of local organisations, fitness classes, and private functions. But until now it didn't have the benefit of WiFi, which many customers expect as a matter of course.

We believed getting WiFi would be beneficial to current and future hirers, and increase our attractiveness to conference type bookings. But achieving this was not as easy as we initially envisaged. Although a charity, the hall is considered a business by the various WiFi providers, which limited our options. Because the hall didn't have a phone line a new incoming cable installation was necessary, requiring trenching and cable ducts. And before we could order this, we had to install a letterbox! It seems somewhat bizarre that to enable electronic communication we had to be able to receive old fashioned post!

The cost associated with installing a new cable to the building meant that this work had to be undertaken by BT Open Reach. But the installation is now complete and should be accessible to all users of the hall from now on.

The Fen Edge Community Association agreed to support us by contributing towards the initial project outlay. We would like to express our thanks to FECA in assisting us, and hope that the installation will enhance use of the hall and be beneficial to the organisations and private hirers accessing the hall in the future.

An evening with Brooks Williams – **Saturday 23 November, 2019. Doors open 7.30pm.**

We are delighted to welcome Brooks Williams back to Rampton. Ranked in the Top 100 Acoustic Guitarists, Brooks is a mean finger-picker and a stunning slide guitarist. Plus, "he has a beautiful voice that you just melt into," says AmericanaUK. Brooks' music is a mix of country-blues and soulful Americana. His massive repertoire spans classic roots and blues and he has worked stages worldwide for close to thirty years, touring constantly in the US, Canada, UK and Europe. Just when you think he can't sing a blues-ier note, he sings it. Just when you think he can't strum a deeper groove, he strums it.

Join us for a fabulous evening with an amazing musician. Cash bar available throughout the evening.

Tickets available from [www.ramptonvillagehall.co.uk](http://www.ramptonvillagehall.co.uk)



## RAMPTON FRIDAY CLUB

*Safe indoor hang-out for 5-14yrs*

Come and join us! Bring your own toys, games, or electronics, or your homework! - and your own drinks and snacks (no nuts please).

Held 6-8pm at Rampton Village Hall on the 1st Friday of the Month – **2 August, 6 September, 4 October, 1 November, 6 December.**

Sessions will be adult supervised by at least 2 volunteers and are open to children that live in Rampton only (sorry, no visiting friends). Recommended donation £1 per child.

For further information and registration form please contact the Rampton Friday Club Secretary – [moyramould@yahoo.com](mailto:moyramould@yahoo.com). Note: a fully completed registration form must be completed and signed by an adult prior to your child attending the club.



*The management committee grateful that WiFi is now installed with the help of FECA.*



## More than just a gym...

At Inspired Health & Fitness Club you will benefit from the following:

- **Cardio Machines**
- **Free Weights** (up to 50kg)
- **Fitness Classes**
- **Fitness Programmes**
- **Sunbed**
- **Resistance Machines**
- **Sauna & Steam Room**
- **Jacuzzi**
- **Personal Trainers**
- **Beauty Salon**

  
**inspired**  
Health & Fitness Club

Opening Hours: **Monday - Friday 7am to 9pm | Saturday - Sunday 8am to 4pm**

Call us: **01223 320299**

[www.inspiredfitnessclub.co.uk](http://www.inspiredfitnessclub.co.uk)

**Cambridge Innovation Park, Denny End Road, Waterbeach, Cambridge, CB25 9QE**



# FECA IN RAMPTON

## RAMPTON CHARITY HORSE SHOW

**Saturday 21st September 2019**

As usual, there is a wide range of classes for all abilities and we hope to see a good turnout of competitors and spectators, regardless of the weather.

We pride ourselves on being a family friendly show and alongside the equine classes, our fun dog show is becoming very popular, so bring along the family mutt for fun challenges such as "Best Biscuit Catcher" and "Sausage Obedience".

We ask local businesses to consider donating a raffle prize. The money raised from the raffle is used to help keep our entry fees for our classes as low as possible. This allows competitors to participate in multiple classes without breaking the bank. If anyone would like to donate a raffle prize, please contact Pat Mansfield (email: ppm369@hotmail.co.uk or telephone 01954 202650 and she will arrange collection.

Please check out our Facebook page and visit our website ([www.ramptonhorseshow.org](http://www.ramptonhorseshow.org)) for all our show updates.

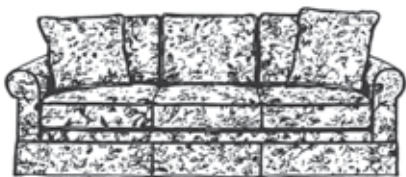
## RAMPARTS



*Ramparts group painting of 'Sunday Afternoon on the Island of La Grande Jatte' by Seurat, which was displayed at the Fen Edge Festival 2019*

## ADRIAN J. READ *upholstery*

Antique and modern furniture,  
loose covers, sundries.  
Free estimates, home choose fabrics.



Unit 1, Convent Drive, Denny End  
Industrial Estate, Waterbeach  
Cambridge CB5 9QT  
Telephone: 01223 860800



## Do You Need A Chiropodist? Are You Sure?

**As a fully qualified Foot Health Practitioner  
I am trained in the following:**

- Diabetic Foot Health Care
- Toenail Cutting
- Minor Wound Dressing
- Bunion Relief
- Corn and Callous Removal

As well as the treatment of many other foot health problems.

**All in the comfort of your own home.**

**Tracy Griffiths Foot Health  
Practitioner**

**S.A.C.Dip FHPT, S.A.C.Dip FHPP**

Please call or email with any queries or bookings:

**Telephone: 07840 636883**

**Email: [tracy.griffiths@hotmail.com](mailto:tracy.griffiths@hotmail.com)**



# THE NINTH BONFIRE BURN 10K SUNDAY 3rd NOV 2019

**START (10:30AM) & FINISH AT  
HISTON & IMPINGTON  
RECREATION GROUND CB24 9LU**

**MALE/FEMALE  
AGE 13 UPWARDS**

**£16 ENTRY FEE (U18 £6)  
REGISTER FROM JUNE 1ST  
AT [WWW.BONFIREBURN10K.CO.UK](http://WWW.BONFIREBURN10K.CO.UK)**

**REFRESHMENTS, TOILETS,  
CAR PARKING, CHIP TIMING,  
MULTI-TERRAIN COURSE**



**AN EVENT ORGANISED BY -  
THE FRIENDS OF HISTON AND  
IMPINGTON RECREATION  
AND HI-RUNNERS**

# ADULT LEARNING & LEISURE

COTTENHAM VILLAGE COLLEGE

HIGH STREET, COTTENHAM, CAMBRIDGE, CB24 8UA

**ADULT LEARNING OFFICE**  
**ADULT LEARNING EMAIL**  
**SCHOOL RECEPTION**

**01954 288751**  
**community@astreacottenham.org**  
**01954 288944**

SPORTS CENTRE

01954 288760

COTTENHAM PRIMARY SCHOOL

01954 206227

WATERBEACH PRIMARY SCHOOL

01223 718988

WILLINGHAM PRIMARY SCHOOL

01954 283030

## ENROL NOW FOR AUTUMN 2019 COURSES

**Tel: 01954 288751 Email: [community@astreacottenham.org](mailto:community@astreacottenham.org)**

**Direct Weblink: <http://community.cvcweb.net>**

**Like us on Facebook  Adult Learning at Cottenham Village College**

**Booking Form – See Page 38**

**Half-term: Monday 21st October – Friday 25th October 2019**

### FREE Tasters/Meet the Tutor

#### Cottenham Village College

**Monday 9th Sept 6-7pm:**

Introduction to the Hair & Beauty Industry

**Monday 9th Sept 7-8pm:**

Italian Conversation, Introduction to Computer Skills, Woodwork & Carpentry

**Tuesday 10th Sept 7-8pm:**

Revive your French Plus

**Wednesday 18th Sept 7-8pm:**

Let's Talk English

#### Ploughman Hall Willingham

**Thursday 19th Sept:**

Adult Ballet Improvers 10.30-11.30am AND Total Tone Fitness 11.30am-12.15pm



Education & Skills  
Funding Agency



Cambridgeshire  
County Council



CAMBRIDGESHIRE  
& PETERBOROUGH  
COMBINED AUTHORITY

## MONDAY

### **Adult Ballet Beginners (Plus) - 10 weeks 7.50-8.50pm Fee: £60 starts 16th September**

Ideal for complete beginners, those who took ballet as a child and have had a break, or older dancers who would like to maintain their mobility. The lessons will focus on teaching basic ballet barre and centre technique with correct posture and alignment. A good foundation from which students can progress safely to further levels.

### **Art History: Art Nouveau to Abstraction – 9 weeks 7-9pm Fee: £108 starts 23rd September**

A basic introduction to selected art movements during this period, 1890-1920, starting with the Art Nouveau Movement, how it affected European countries focusing on painting, architecture and the applied arts.

### **Creative with Clay – 10 weeks 7-9pm Fee: £145 includes clay & firing starts 16th September** Course currently full – contact us to go on the waiting list.

### **Start Your Own Business – 10 weeks 7-9pm Fee: FREE\*\* (£119 if not funded) STARTING JANUARY 2020**

\*This course may be FREE for learners who fulfil certain funding criteria. Please see our FUNDING box on page 34 or contact us for further information.

### **Disco Dance: Monday Night Fever – 8 weeks 6.45-7.45pm Fee: £48 starts 23rd September** Do you love dancing to disco music from the 70s? Join this fun and welcoming class, all abilities and ages welcome. Learn iconic moves to music from the disco era. Let's get dancing... and keep fit too!

### **Dressmaking – 10 weeks 12.30-2.30pm Fee: £119 starts 16th September**

Learn how to make basic pattern alterations, cut out, assemble and fit garments. Be guided through the purchase of fabrics & patterns, basic dressmaking techniques and make samples to practise your new skills. Suitable for all abilities. Materials extra.

### **Fitness for Mature Movers – 5 weeks 10-11am Fee: £25 TILLAGE HALL, WATERBEACH starts 16th September**

Gently stretch and tone in a friendly class, all movements to your own ability which will improve your balance and agility. You really are never too old to start toning those muscles!

### **Introduction to the Hair & Beauty Industry – 8 weeks 6-8.30pm Fee: FREE\*\* (£119 if not funded) starts 23rd September FREE TASTER 9th September 6-7pm**

An introduction to the skills and attributes required for anyone to progress in the hair & beauty industry covering hair, beauty and barbering practical skills and theoretical information to enable you to go on to

full accredited qualifications. It may also appeal to anyone who would like to learn some basic skills for their own pleasure. \*This course may be FREE for learners who fulfil certain funding criteria. Please see our 'FUNDING' box on page 34 or contact us for further information 01954 288751.

### **Introduction to Woodwork & Carpentry – 10 weeks 7-9pm Fee: FREE\*\* (£119 if not funded) starts 23rd September FREE TASTER 9th September 7-8pm**

Suitable for complete beginners and those wishing to work on projects. Particularly aimed at anyone wishing to gain new skills to enable them to progress in the workplace or move on to accredited qualifications and apprenticeships. \*This course may be FREE for learners who fulfil certain funding criteria. Please see our 'FUNDING' box on page 34 or contact us for further information 01954 288751.

### **Introduction to Computer Skills - 5 weeks 7-9pm Fee: £60 starts 16th September FREE Taster 9th Sept 7-8pm**

Suitable for complete beginners and particularly aimed at anyone wishing to gain new skills to enable them to progress in the workplace. An introduction to Word, Excel & Powerpoint.

### **Italian Conversation (Improvers) – 10 weeks 7-8.30pm Fee: £95 starts 16th September FREE TASTER 9th September 7-8pm**

Develop and improve your confidence with Italian at this informal conversation class. Learners will need a good knowledge of Italian with at least one year's experience.

### **Pilates for Everyone (Ploughman Hall, Willingham) – 10 weeks 10.45-11.45am Fee: £69 starts 16th September**

This class involves breathing, centring, balance and control and involves functional movement for everyday life, with standing and floor exercises to improve posture. Mixed ability

### **RYA Day Skipper – 12 weeks 7.30-9.30pm plus 3 Saturdays (10am-4pm) Fee: £350 Starts 23rd September**

To equip students with the theoretical knowledge required for a Day Skipper practical course Certificate. Suitable for beginners and those with little or no experience in cruising yachts or motor cruisers. Saturdays 21st Sept, 12th Oct, 16th Nov

### **Watercolour Painting for Improvers – 10 weeks 10am-12noon Fee: £119 starts 16th September** Course currently full – contact us to go on the waiting list.



## Watercolour (Landscapes) for Improvers – 10 weeks 7-9pm Fee: £119 starts 16th September

Aimed at those with some experience of watercolour painting. The course will have a definite bias towards traditional landscape painting, colour mixes, tips and 'tricks of the trade' for you to learn and enjoy. Students to provide own materials.

## TUESDAY

### Fitness for Mature Movers – 5 weeks 11.30am-12.30pm Fee: £25 PLOUGHMAN HALL, WILLINGHAM starts 17th September

Gently stretch and tone in a friendly class, all movements to your own ability which will improve your balance and agility. You really are never too old to start toning those muscles!

### Mindfulness Drawing – 5 weeks 9.30-11.30am Fee: £59 starts 17th September

A series of relaxed and friendly workshops where you will learn how to use drawing to slow down, find focus and pay attention to the present moment in time. Create effective textures using a variety of techniques and take home some fantastic, professional looking drawings.

### Patchwork – Different Techniques in Traditional Patchwork – 5 weeks 10am-3.30pm Fee: £150 starts 29th October

Learn some of the traditional techniques in patchwork and its history. Includes Seminole, folded and Japanese folded patchwork suitable for beginners and those in the know. Materials extra.

## WEDNESDAY

### Contemporary Textiles – 5 weeks (alternate Wednesdays) 9.30am-1.30pm Fee: £120 starts 25th September

Aimed at people with some creative textile experience who would like to be inspired and challenged by being part of an enthusiastic, creative community. Fibres, surface design, free machine and hand embroidery, dyeing, printing and mixed media - there is no limit to the creative techniques we'll be exploring in this class.

### Creative with Clay – 10 weeks 7-9pm Fee: £145 includes clay & firing starts 18th September

Course currently full – contact us to go on the waiting list.

### Fitness for Mature Movers – 5 weeks 2.30-3.30pm Fee: £25 COTTENHAM VILLAGE COLLEGE starts 18th September

Gently stretch and tone in a friendly class, all movements to your own ability which will improve your balance and agility. You really are never too old to start toning those muscles!

### Yoga for Beginners – 8 weeks 6.30-8pm Fee: £72 starts 7th October

Suitable for all ages and abilities including those who want to go back to basics. Increase your flexibility and work with your breath to relax. Not suitable for ladies in the first three months of pregnancy.

### Revive Your French Plus (Term 1 of 3) – 10 weeks 7-9pm Fee: £119 starts 17th September

FREE TASTER 10th September 7-8pm  
Acquire a greater basic knowledge of French vocabulary and grammar to gain confidence speaking, listening, reading and writing.

### T'ai Chi for Beginners Plus – 10 weeks 7-8pm Fee: £60 starts 17th September

For beginners or those with a basic knowledge.

### T'ai Chi for Improvers – 10 weeks 7.45-9pm Fee: £75 starts 17th September

For those with at least one year's experience.

### Yoga for Improvers – 8 weeks 7-8.30pm Fee: £72 starts 8th October

For those with at least one year's experience. Increase your flexibility, improve your asana practice and develop your understanding of yoga. Not suitable for ladies in the first three months of pregnancy.

### Let's Talk English – 10 weeks 7-9.00pm FREE starts 25th September Taster/Initial Assessment 18th September 7-8pm

English classes for speakers of other languages who want to improve their English vocabulary and grammar. This course offers a foundation to enable learners to move on to accredited English courses and eventually gain employment or voluntary work. Build your confidence with English in everyday situations with our relaxed, friendly and supportive Tutor.

### Salsa Dance Mixed Ability – 10 weeks 7-8pm Fee: £60 starts 18th September

A fun and fabulous dance style in a relaxed and friendly class. Learn the essential steps with our experienced Tutor and build your confidence learning combinations to lively Latin music.

## THURSDAY

**Adult Ballet Improvers: Ploughman Hall  
Willingham – 8 weeks 10.30-11.30am  
Fee: £56 starts 3rd October**

**FREE TASTER 19th Sept 10.30-11.30am**

A good basic knowledge of Ballet is required, students will learn more complex steps to a wide variety of music styles.

**Adult Tap for Absolute Beginners – 8 weeks  
7-8pm Fee: £48 starts 12th September**

For complete beginners, this class is designed to teach rhythm, co-ordination, terminology and the steps that are the building blocks for Tap Dancing.

**Adult Tap Dancing Improvers – 8 weeks 6-7pm  
Fee: £48 starts 12th September**

For those who have at least 20 hours previous experience of Tap. Develop rhythm, co-ordination and the steps that are the building blocks for Tap Dancing.

**Adult Tap Dancing Advanced – 8 weeks 8-9pm  
Fee: £48 starts 12th September**

For those who have previously completed at least a year of Adult Improvers Tap or who have previous experience of Tap to Grade 6.

**French Conversation (Term 1 of 3) –  
10 weeks 9.30-11.30am Fee: £119 starts  
19th September**

An informal conversation class to develop and improve your French. Learners should have a good knowledge of French with at least 2 years' experience.

**Total Tone Fitness: Ploughman Hall  
Willingham – 8 weeks 11.30am-12.15pm  
Fee: £45 starts 3rd October**

**FREE TASTER 19th Sept 11.30-12.15**

Suitable for all ages, no previous experience necessary. A great class for keeping fit and toning the whole body as well as improving balance and co-ordination and using elements of pilates, dance and yoga. Come and try the Free Taster and talk to the Tutor.

**Upholstery – 10 weeks 10am-3.30pm  
Fee: £300 starts 19th September**

Course currently full, contact us to go on the waiting list.

## FRIDAY

**Upholstery – 10 weeks 10am-3.30pm Fee: £300 starts 20th September**

Learn the techniques and skills to upholster a small chair or stool in traditional or modern upholstery. Intermediate level learners can continue to upholster an existing project or to start a larger project in either modern or traditional upholstery learning new and more advanced techniques.

### FUNDING available for some courses\*\*

Some of our courses are funded through the Adult Education Budget allocated by the Cambridgeshire and Peterborough Combined Authority (CPCA) or the Education and Skills Funding Agency (ESFA) and part financed by the 2014-20 European Social Fund (ESF) programme. This funding is managed by Cambridgeshire County Council, Adult Learning and Skills. A short video covering the background of ESF, what it does, how it helps and who benefits is available on the European Union website: <http://ec.europa.eu/esf/home.jsp>

How we use your data: <https://www.gov.uk/government/publications/esfa-privacy-notice>

Courses that attract funding: learners aged 19 and above may be eligible for a FREE course if you meet certain criteria: eg: claiming Universal Credit, some means tested benefits, possess only a Level 1 qualification, low wage, speakers of other languages. Contact us for clarification on 01954 288751, Email: [community@astrecottenham.org](mailto:community@astrecottenham.org)

This funding applies to the following courses aimed at anyone wishing to gain new skills to enable them to progress in the workplace or move on to accredited qualifications and/or apprenticeships.

**Introduction to Woodwork & Carpentry  
Let's Talk English**

**Introduction to the Hair & Beauty Industry  
Start Your Own Business (January 2020)**

Further information in courses listed above or on our website: <http://community.cvcweb.net>

### NEW COURSE IDEAS:

We're always keen to know about new course ideas – contact us at Adult Learning if you have ideas about new courses that you'd like to try or if you're a Tutor who would like to offer a new course.

Tel: 01954 288751 or Email: [community@astrecottenham.org](mailto:community@astrecottenham.org)

## SATURDAY DAY SCHOOLS

Time: 10am–4pm (unless otherwise stated)

Fee: £42 unless otherwise stated

Please note all students will need to bring a packed lunch for whole day courses. \* = materials/ingredients extra

### DRESSMAKING - Sally Tilley

**3 SATURDAYS 10am-4pm - Fee: £126 Dates: 21st Sept, 12th Oct & 16th Nov 2019**

Guidance through fabrics, patterns, cutting out, assembling and fitting garments. Sewing machines available to use or bring your own but this must have a current PAT Certificate. Materials extra.

### UPHOLSTERY – Lisa Cramp

**3 SATURDAYS 10am-4pm – Fee: £126**

**Dates: 21st Sept, 12th Oct & 16th Nov 2019**

Waiting list at present but please contact us to express your interest Suitable for beginners or intermediate level. Beginners will learn the upholstery techniques and skills to upholster a small chair or stool in traditional or modern upholstery. Intermediates may continue to upholster an existing project or start a larger project. **Students needs to contact the tutor to discuss their project**

**Email : lisacrampupholstery@gmail.com**

### STITCHED TEXTILES MASTERCLASS

**2 SATURDAYS per term 10am-4pm – Fee: £84**

**Autumn Term: 21st Sept, 16th Nov**

The Stitched Textiles Masterclass is aimed at all those experienced Textile Artists who have a serious commitment to the extension and development of their acquired skills. **ENROLMENT WILL BE BY SELECTION ONLY.** Students of the Masterclass are encouraged to develop existing textile skills through individual experimentation and discovery led by design. It is expected that students will have completed C&G Embroidery Diploma or have attained similar skills and qualifications through other avenues of study. Please contact us for more information 01954 288751

### SATURDAY 21st September

- Round & Oval Rush Mats\*

### SATURDAY 12th October

- Emergency First Aid at Work £75
- Family Cooking: Cupcakes & Cookies 10am-1pm £18 (ingredients included)
- Introduction to Astronomy 9.30am-1.30pm £30
- Patchwork Quilting for Beginners\*
- Watercolour Pen & Wash\*

### SATURDAY 16th November

- Calligraphy: Gothic Script & Decorated Capitals\*
- Stained Glass Christmas Decorations 9.30am-4.30pm £49\*
- Dragon & Tiger Qigong
- Intro to British Sign Language 10am-2pm £30
- Lino Printing Workshop £55 (materials included)

### HAIRDRESSING SALON opening at Cottenham Village College

**Tuesdays and Thursdays 3:30-8:30pm from September 2019**

**To Book appointments: Tel: Cheryl on 07969 970146**

From September Cottenham Village College are now able to offer a full hairdressing service to the local community. This is an exciting opportunity to use our very own salon, equipped with up to date products and offering all the latest treatments and services. The Salon will be operated by a fully qualified stylist Cheryl with over 30 years' experience.



## ENROLLING IN CLASSES – Adult Learning Terms & Conditions

### ENROLLING IN CLASSES – Adult Learning Terms & Conditions

You may enrol in any of the adult or junior classes by using the booking form in this brochure or over the phone with a debit/credit card. Bring or send your booking form to the College, cheques payable to ASTREA ACADEMY TRUST. You can also print off a copy of the booking form from our website: <http://community.cvcweb.net>

**Office hours** - weekdays 9am-2.30pm and Monday–Wednesday evenings 6.30-8.30pm.

**Enrolling by phone:** call us on 01954 288751

**Enrolling by email:** [community@astreacottenham.org](mailto:community@astreacottenham.org) with full details of course, name, address and telephone number.

**Enrolling by post:** enclose a stamped addressed envelope if you would like your receipt returned.

### Enrolment and Fee Policy

- For full course information: <http://community.cvcweb.net>
- You can book your chosen course by completing a booking form and posting it with a cheque payable to Astrea Academy Trust for the course fee (please do not send cash).
- Material charges are not included in the course fee unless otherwise stated.
- We accept bookings over the phone, please have your credit/debit card to hand.
- We welcome enquiries by email but please DO NOT quote your card payment details on email.
- Enrolments are welcome throughout the year.
- Courses with fewer than the minimum number of learners may have the option of continuing on payment of supplementary fees.
- Fees are payable in full at the time of booking a course. We accept payment by all major debit and credit cards, cheques (payable to Astrea Academy Trust) or cash in person.
- Please note, should you withdraw from a course that continues to meet you will still be liable to pay any outstanding fees.
- Refunds will be paid in full if a class is unable to start due to insufficient enrolments.
- Refunds cannot be given if a course has already started, unless you cancel your place for medical reasons, in which case a Doctor's Certificate is required.
- Concessionary fees may be available at the discretion of the College if you are:
  - in receipt of the "Guaranteed Credit" element of the Pension Credit
  - in receipt of a means tested benefit, eg Working Family Tax Credit
  - in receipt of Universal Credit

**DATA PROTECTION: OPT-IN to receive information about courses** –if you wish to receive information about Adult Learning courses please go to our website: [community.cvcweb.net](http://community.cvcweb.net) and follow the link to **OPT IN** to enable us to keep you updated regarding courses.

### Learner Information

- If you have given us your email address, you will receive confirmation of your place following enrolment. Contact Adult Learning 01954 288751 or Email: [community@astreacottenham.org](mailto:community@astreacottenham.org)
- Please note that we attempt to run classes on consecutive weeks, however if this isn't the case we will let you know the dates in advance as far as possible
- In the event of Tutor illness or school closure due to severe weather conditions resulting in a cancelled class, an additional class may be offered at the end of the course
- Free parking is available (at own risk)

- **PAT Testing** – any personal electrical items used on school premises must hold a current PAT certificate unless under 1 year old, eg: Sewing Machine, Overlocker, glue guns, soldering irons etc.

**Cambridgeshire County Council Adult Learning & Skills** supports a wide range of other adult learning opportunities across Cambridgeshire to support adults with the lowest levels of qualifications, or no qualifications at all and so typically find themselves in lower paid, less secure jobs or unemployed. Search our website: [www.cambsals.co.uk](http://www.cambsals.co.uk) for details of all our funded courses.

### Equality & Diversity

We are fully committed to equality of opportunity and welcome enrolments from all adults aged 19+. We positively encourage all learners with any concerns about specific needs which might affect their learning to discuss their requirements with us in confidence. We believe that everyone is entitled to learn in an environment that is free from discriminatory behaviour so that we build a community based on mutual trust and respect. We will do our best to ensure that resources and equipment are accessible to all and make reasonable adjustments to ensure that all learners can access activities.

### Additional Learning Support

We welcome learners with disabilities, learning difficulties, medical conditions and other needs. If you would like to discuss how we can support you to reach your learning aim, please speak to your Tutor or ask for a confidential discussion with the Adult Learning office 01954 288751.

### Safeguarding

We've made arrangements to ensure that you are safe in Cottenham Village College. If you feel you are not safe for any reason, eg. through verbal or physical abuse or you have been discriminated against, tell your Tutor or the Adult Learning office, who will investigate to ensure your safety.

**National Careers Service (NCS)** Careers advice is available to all learners. The NCS provides free information and guidance on all aspects of learning, skills development and employment. Help is provided in a way that suits you, on-line, face to face or by telephone.

### Transport Difficulties

If you would like to attend a class but have no transport please contact us on 01954 288751

### Learning Partners

If you are interested in being a learning partner in a class of your choice (you do not pay fees) to enable you to offer help to someone requiring support, please get in touch with us – Tel: 01954 288747.

### INSURANCE AND LOSSES

Cottenham Village College cannot accept responsibility for accidents to members of clubs and classes other than those covered by the College's Public Liability Insurance, nor for loss of personal property left on the premises or in a car, nor for damage to cars and bicycles - parking is at your own risk.

## VENUE Hire at COTTENHAM VILLAGE COLLEGE

Excellent facilities available for hire evenings and some weekends for meetings, conferences or clubs.

This can be on a block booking or casual basis. Contact the College for further information on 01954 288944

Or Email [andrea.swain@astreacottenham.org](mailto:andrea.swain@astreacottenham.org)



**Cottenham Sports Centre boasts an array of quality sports facilities; open to the public: 5pm-10pm Mon – Fri. 9am–5pm Saturday & Sundays**

**Tel: 01954 288760 or visit: [cottenhamsportscentre.co.uk](http://cottenhamsportscentre.co.uk)**

These excellent facilities are available to clubs, groups and individuals to hire on either a block booking or casual basis.

- A dance/aerobics studio, with wood sprung floor
- A floodlit artificial turf pitch
- Multi use sports hall (3 badminton courts)
- Gymnasium (smaller hall suitable for martial arts, etc.)

- Four floodlit tennis/netball courts
- Outdoor cricket nets
- Modern changing rooms, with showers and lockers

## SPORTS CENTRE COURSES

We run a number of sports courses for adults and children.

**PLEASE NOTE: ALL FEES MUST BE PAID BEFORE THE START OF THE COURSE**

To book a Sports Centre course/class please contact 01954 288760 between the times of:  
5pm-10pm Monday to Friday or between 9am-5pm Weekends

### FITNESS CLASSES

<b>Monday:</b>	<b>Boxercise</b>	7:15pm-8:15pm	Gymnasium
<b>Saturday:</b>	<b>Circuits</b>	8-9am	Sports Hall
<b>Members Cost:</b>		FREE	
<b>Non Members Per Class:</b>		£5	

### Cottenham Tennis Club Memberships: April 2019 – April 2020

<b>Juniors (Under 16)</b>	£20	
<b>Student</b>	£22	
<b>Adult</b>	£45	
<b>Family (based on two parents &amp; two Children)</b>	£85	£15 Per Additional Family Member
<b>Plus 1 on Family</b>	£15	
<b>Wednesday: Club Evening</b>	6.00-9.30pm	
<b>Thursday: Children Coaching</b>	5.30-6.30pm	
<b>Thursday Match Fixtures &amp; Club Courts Available</b>	6.00-9.30pm	
<b>Saturday &amp; Sunday Club Courts Available</b>	10:00am-4.30pm	
<i>Court Fees outside of hours: £2.50 per hour</i>		

### Fitness Suite Memberships

<b>Student &amp; Concession:</b>	£20	per month
<b>Adult Membership:</b>	£25	per month
<b>Adult Annual:</b>	£250	
<b>Single Session</b>	£6	

### Badminton Classes

#### MONDAY Evenings

<b>Beginners</b>	6.00 – 7.00pm	£6 per session Pay as You Go
<b>Intermediates</b>	7.00 – 8.00pm	£6 per session Pay as You Go
<b>Advanced</b>	8.00 – 9.00pm	£6 per session Pay as You Go
<b>Challenge Time</b>	9.00 – 9.55pm	TERM PRICES AVAILABLE

### Personal Training

	Half Hour	Hour	Group (2 person) Half Hour	Group (2 person) Hour
<b>Single</b>	£25	£35	£40	£50
<b>Block Of 5</b>	£120	£150	£170	£220
<b>Block of 10</b>	£220	£280	£300	£400

### GP REFERRAL CLASSES – SOUTH CAMBRIDGESHIRE ACTIVE & HEALTHY 4 LIFE

Patients are referred by a Health Practitioner to improve their health through an individually tailored fitness programme over a 12 week course. Conditions that benefit from exercise include obesity, arthritis, high blood pressure and cholesterol, diabetes and depression.

#### How do I join?

If you think this scheme is for you please discuss it with your GP or Health Practitioner and they can complete a referral form for you.

#### Tuesdays

F4H Class (Y) 4:00pm – 5.00pm £72 (Twice a week, 24 sessions)

#### Thursdays

F4H Class (Y) 4:00pm – 5.00pm £72 (Twice a week, 24 sessions)

Plus assessments which cost £8 each and are undertaken at the beginning and end of the scheme.

The Active and Healthy 4 Life scheme prices have been subsidised by South Cambridgeshire District Council and Cambridgeshire NHS.

**CONTACT: Cottenham Sports Centre Tel. 01954 288760 or cottenhamsportscentre.co.uk**





## ADULT LEARNING BOOKING FORM

TITLE	FORENAME	SURNAME	
ADDRESS			
POSTCODE			
TEL:			
MOBILE:			
EMAIL:			
	COURSE NAME	COURSE FEE £	RECEIPT No.
1.			
2.			
3.			

**CHEQUES PAYABLE TO: ASTREA ACADEMY TRUST**

**ARE YOU ELIGIBLE FOR CONCESSION FEES?**  
**THE FOLLOWING GROUPS MAY BE ABLE TO CLAIM THE CONCESSION RATE**  
**AT THE COLLEGE'S DISCRETION**

Working Family Tax Credit

Universal Credit

Income Based Benefit

If you receive Pension Credit – means tested element of State Pension

**Please note that proof of above will be required otherwise full fee will be due.**



# FECA IN WILLINGHAM

## WILLINGHAM ACTION GROUP

Our volunteers will be helping at the Horticultural Show at Willingham School on **Saturday 31 August** and after that we will be concentrating our energy on Willingham Feast!

The Feast weekend is **5–6 October**, but related events will be spread out over a three-week period.

**Friday 27 September and Saturday 28 September** – Willingham Beer Festival at Willingham Social Club (WSC). As well as a range of excellent beers, ciders and a gin bar, there will also be live bands and good food.

**Monday 30 September** – Jam Night involving some excellent local musicians at WSC.

**Thursday 3 October–Saturday 5 October** – Thurston's Funfair on the Green.

**Saturday 5 October** – wine-tasting quiz organised by Willingham Wine Tasting Club at WSC.

**Saturday 5 & Sunday 6 October** – exhibition of work by Willingham Photography Club and Willingham Octagon Art Group, held in the Public Hall and Library respectively.

**Evening Sunday 6 October** – joint churches service at St Mary and All Saints.

There will be other events, possibly a family disco and a fun run but further information of all the events with timings, venue, cost, etc. will be found in the September issue of Willingham News or search for the 'Willinghamlife' website.

**Friday 11 October** – Custard Comedy Night at WSC. If you want to go, get your tickets early as the last one sold out well in advance.

## WILLINGHAM YOUTH TRUST

*Providing fun activities for young people and their families across the village and wider communities.*

*We aim to help young people advance in life through the provision of recreational and leisure time activities provided in the interest of social welfare and designed to improve the conditions of life, and provide support and activities which develop their skills, capacities and capabilities to enable young people to participate in society as mature and responsible individuals.*

Family Activities and Events

**Youth Club (Youth Zone)** – Following on from the success of 2018, we will continue working in partnership with the Connections Bus Project to deliver the Youth

Club for any child in Willingham and the surrounding villages years 6–9 to attend on a Wednesday night, 7–8:30pm.

The Youth Club offers a wide range of fun activities and a safe place for young people to come and spend time with their friends.

**Computer Coding Club** – We will kick off the coding club for any young person who is interested again in the Autumn. Dates are yet to be decided but they will no doubt continue to be on a Saturday morning between 11am–12.15pm. Contact: [enquiries@willinghamyouthtrust.org](mailto:enquiries@willinghamyouthtrust.org) for more info.

**Annual Halloween Family Disco** – October 2019: Last year the Halloween Family Fancy Dress Disco was much talked about. There were fun costumes, great games, lovely food and generally great fun. This offers young people and their families a rare opportunity to come and enjoy some fun together. To dance, cover themselves with glitter and face paint and to kick off the Autumn fun alongside the other fun events to be enjoyed as part of the Willingham Feast. Look out for this year's date at [willinghamyouthcentre.com](http://willinghamyouthcentre.com) or on our Facebook page at [facebook.com/willinghamyouthtrust](https://facebook.com/willinghamyouthtrust).

Tickets are £12 a family. This includes 2 adults and up to 4 children and are normally on sale a few weeks before the event and will be available at the Willingham Post Office and the Office at Willingham Primary School.

**It's BBQ Time!** We have been much supported by our local partners in the last 12 months and are keen to pass this gratitude on.

We supported the Fen Edge Festival with our BBQ on Saturday 22 June. This was a great day and we were truly grateful to be part of the fun.

On 30 June we also supported the local Craft Beer Festival, where it was nice to show support to another local cause.

**27 and 28 September** will see us once again don our aprons and oil up our tongs as we support the Willingham Beerfest hosted at the Willingham Social Club. Come down and enjoy the fun, food, assortment of ales and good company.

**Pop-up Park Café** open Saturdays 10am–1 pm and Sundays 11.30am–3.30pm at the Willingham Youth Centre, West Fen Road, Willingham, adjacent to the QEII playing field.





## DH Property Maintenance & Landscapes

- Painting & Decorating
- Carpets & Vinyls supplied and fitted
- Tiling
- Lock changes
- General house maintenance
- Pressure Washing
- Patios, Decking & Fencing
- Planting & Pruning
- Rotavating, Turfing & Seeding
- Hedging & Tree Work
- Garden and Rubbish clearance
- Seasonal lawn care / regular maintenance visits

And much more!



**Please call Dave Hinson for a no obligation free quotation on -**  
**Mobile: 07789 627758**  
**Email: [dhproperty@outlook.com](mailto:dhproperty@outlook.com)**

## A.R.Aspinall & Sons Ltd

Tel: 01954 234966 Fax: 01954 234967

Unit 11 Norman Way Ind Est, Over, Cambs, CB24 5QE.

[www.araspinall.co.uk](http://www.araspinall.co.uk)

**WE STOCK A FANTASTIC RANGE  
OF NATURAL PAVING  
PRODUCTS COME AND VISIT  
OUR NEW DISPLAY AREA.**

- Bricks • Blocks • Lintels • Cement • Sand  
• Gravel • Hardcore • Timber • Fixings  
• Footwear • Decorating Supplies • Paving Slabs

Opening times: Mon to Fri 7.30am – 5pm



**WE OFFER A FREE LOCAL DELIVERY SERVICE!**

## DRAKE

**Heating and Plumbing**

Boiler Installations  
Bathroom Installations  
Underfloor Heating Installations  
Central Heating Installations  
Boiler Servicing  
Gas Safety Checks / Landlords  
Boiler Breakdown  
Emergency Call-outs

Mobile: **07496 503 770**  
Office: **01954 781 478**  
[drakehandp@icloud.com](mailto:drakehandp@icloud.com)

Find us on   
[Facebook.com/drakehandp](https://www.facebook.com/drakehandp)



# FECA IN WILLINGHAM

## WILLINGHAM SOCIAL CLUB

WSC is a not-for-profit organisation that welcomes new members, offers hire of its hall and holds many varied events open to all.

### Willingham Beer Festival



**Friday 27 September** 4-11pm and **Saturday 28 September** noon-11pm.

Last year's Beer Festival funded our new accessible toilets, which were opened by TV celebrity Paul Sinha of The Chase. We have recently installed air-conditioning with the kind assistance of a grant from the Mick George Community fund, and this year's Beer Festival will raise funds for a new community kitchen.

We pride ourselves on a Beer Festival that is not just about the beer! Although we do spend many hours sampling! We have a full itinerary of musicians playing from 6pm on Friday with the headliners being *The Lightwaves* and 4pm on Saturday, headliners *The Macamos*. The Porterhouse Gin Club will be here with their designer bar many unusual gins and mixers. Food available and the bar is open as usual.

Thank-you once again to our main sponsor Highgate Country Store and Butchery and for help from Willingham Action Group, the Bee Group, and the many volunteers.

If you would like to sponsor a barrel please contact us, we offer a great deal of promotion throughout the year in return. See [www.willinghambeerfestival.co.uk](http://www.willinghambeerfestival.co.uk)

**Wednesday Cash Bingo** – Every Wednesday the opportunity to win generous cash prizes. Doors 7pm, Eyes down 7.30pm. £6 for 6 books in 6 games. Over 18s only.

**Saturday 7 September** – 8pm, Johnny Dee, Comedy Entertainer. Back by popular demand Jonny will join us for another evening of ridiculously funny and daring costumes, impersonations and music, this is always a great night. Guaranteed dancing and audience participation from willing members! Free to members. Guests £2. Special offers on drinks, usual party games and raffle at halftime.

**Saturday 14 September** – 8pm, Vex, Live funky party band. From Norfolk this young vibrant group play covers from *Stevie Wonder* and *Prince* to *Bruno Mars* and *Maroon 5*, the boys have everything you need to get you in the mood to dance the night away. With a unique style of funky remixes combining all your favourite dance hits from the past decades, Vex is your go to band for any party! Tickets £5 from the club or

[www.wegottickets.com/event/466467](http://www.wegottickets.com/event/466467) only on the door if still available, we have a strict capacity. Everyone over 18 welcome.



**Friday 11 October** – 7.45pm, Custard Comedy. It's a double headline, Britain's Got Talent special this October at the club! Featuring Britain's Got Talent stars Nick Page and Mandy Muden. Alongside Hannah Silvester and MC Lou Conran. The night begins at 8.15pm and tickets start at just £10. [www.wegottickets.com/event/471597](http://www.wegottickets.com/event/471597)

**Friday 18 October** – 8pm, *Graham Buxton*, who is a Cambridgeshire-based singer/songwriter and guitarist. He has recently been performing solo gigs across the UK, in addition to his collaborative efforts. He covers so many different genres and judges his audience, *Ed Sheeran*, *George Ezra* to *Buddy Holly*! A true talent! Free Members Night, guests £2.

**Saturday 26 October** – 8pm, *Scouted'n'Booted*, Live Ska Band, who play songs from artists such as *Madness*, *The Specials*, *Bad Manners*, *UB40*, *Desmond Decker*, *The Selecter* and many more. Tickets £5 from the club or [www.wegottickets.com/event/466470](http://www.wegottickets.com/event/466470). Everyone welcome. Many of our events sell out so please check in advance if there will be tickets available on the door.

**Friday 8 November** – 8pm, *Jax & Co*. Presenting the best of *Johnny Cash*, fresh out of Suffolk! A performance filled with fantastic solos and duets that span the entirety of Johnny's Career, from the early hits such as *Hey Porter* and *Jackson* ending with a beautiful rendition of *Hurt*. With plenty of songs to get you dancing and singing along to, *Jax & Co* guarantee a show to remember! Tickets £5 from the club or [www.wegottickets.com](http://www.wegottickets.com) Everyone over 18 welcome.



**Saturday 16 November** – 8pm, Soul and Motown Disco, UA Roadshow return with their popular disco. With your most loved tracks from across this era and requests welcome. Everyone over 18 welcome. Just £5 entry tickets available in advance from the club or on the door.

**New Year's Eve** tickets will be on sale soon featuring live band *On the Ceiling*  
Please see our Facebook pages and websites  
[www.willinghamsocialclub.com](http://www.willinghamsocialclub.com) and  
[www.willinghambeerfestival.co.uk](http://www.willinghambeerfestival.co.uk) for regular updates.

**Visit our truly stunning display gardens ...**



**Probably the largest display centre in the UK,  
selling directly to trade and the general public**

Bannold are one of the UK's largest independent suppliers of natural hard landscaping materials. We stock natural products sourced directly from the UK and around the world enabling Bannold to offer premium products at the most competitive rates to trade and the general public.

- Natural Paving • Setts and Paviments • Stone Walling
- Decorative Gravels • Rockery • Boulders • Waterfeatures
- Topsoils • Soil Improvers • Bark Mulches • Sands
- Hardcore and Cements

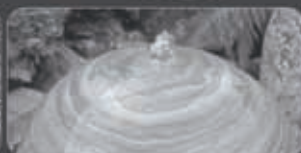


**Freephone: 0500 012231  
or 01954 231666**

**Capability Barns  
Huntingdon Road  
Fen Drayton  
Cambridge CB24 4SD**

**Opening Times:  
Mon-Fri 07.30 till 5.00  
Saturdays 09.00 till 1.00**

**[www.bannold.co.uk](http://www.bannold.co.uk)**





# FECA IN WILLINGHAM

## WILLINGHAM WI

Our summer outing is on **Thursday 8 August** to 78 Derngate in Northampton, which is the only house in England designed by Charles Rennie Mackintosh.

We have a mixed craft group that meets on the last Wednesday of the month from 10.30am – 4pm at the Baptist Church in Willingham. Everyone is welcome. You can call in for in for part of the day or the whole day.

We also hold monthly meetings on the second Monday of each month at Willingham Social Club, starting at 7.30 pm.

The following are the autumn topics:

**9 September** – The Nordoff Robbins Music Therapy; **14 October** – The Norris Museum (Bridges Brewers and Barges);

**11 November** – All about Emmaus, and to end the year our **8 December** meeting will be our Christmas Party.

New members are always welcome. Contact Wendy Law on 01954 202188, or email [willinghamwi28@gmail.com](mailto:willinghamwi28@gmail.com).

## WILLINGHAM GARDENING CLUB

Willingham Gardening Club meets on the first Monday of the month, except January, at Willingham Social Club, at 7.30pm. New members are always welcome and guests are welcome at all our meetings for a small charge. See the Fen Edge Events Diary (pages 5 and 7) for details of our forthcoming talks.

**Excursions: Saturday 28 September** – Knebworth House and Park. The cost of travel to Knebworth is £17 per person (plus entry fee £12). Pick-up at Cottenham 8.15am, Willingham 8.30am.

**Thursday 21 November** – Christmas Shopping in Birmingham. Cost £23 per person. Pick-up Cottenham 7.45am, Willingham 8.00am.

For further details & booking, contact Celia on 01954 261394.

### Horticultural and Craft Show Saturday 31 August.

Show Schedules are available in all the usual locations around Willingham village. There are some exciting changes for this year particularly in the children's sections. Please promote this traditional village event to your friends and families. If you have any queries contact Carol Bailey 01954 260794.

# GIUSEPPE PIRAN

## SPECIALIST PAINTERS & DECORATORS

QUALITY • CONTEMPORARY • TRADITIONAL



A bespoke service to suit any budget  
Free estimates & professional advice

w/ [gpiran.co.uk](http://gpiran.co.uk) t/ 0845 050 9277

SUMMIT



**LANDSCAPES**

PAVING

DRIVEWAYS

BRICKWORK

CARPENTRY

GROUNDWORKS

[www.landscapingpaving.co.uk](http://www.landscapingpaving.co.uk)

PHONE: 0 1 2 2 3 - 9 2 9 3 9 4



## **Furniture Restoration**

*Rob Ellis*

*(French) polishing and repair  
of antique (and not so antique)  
furniture by a local restorer*

Telephone: 01954 250153

Mobile 07950 051577



Local Fruit, Vegetables,  
Eggs and Preserves

**Coffee shop open at weekends  
At Manning & Son, Station Rd,  
Willingham CB24 5HG**

**Tel: 01954 206015**

**[www.bushelboxfarmshop.co.uk](http://www.bushelboxfarmshop.co.uk)**

# FECA IN WILLINGHAM

## WILLINGHAM BOWLS CLUB

The season is well under way and we are pleased to have welcomed new members.

We have open rollups on a Sunday Morning, 10.30am–12.30pm. It's a very casual event, dress code is relaxed but your shoes must have flat soles, no heels. Bowls has a reputation as only being suitable for the elderly and a stuffy dress code. How

wrong that is! We have one member who is 15 years of age and we would love to see more of that age. Bowls is a good form of exercise and is social. For the competitive we play in three leagues, throughout the year, indoor as well as outdoor.

If you want to try bowls please pop down Sunday morning or come down, have a look and have a cup

of tea if you don't want to try straight away. We are of mixed experience, novice to experienced, so nobody worries about how good you are. It is also a gender equal sport.

Membership is £35 for adult members. Those 16 and under are free.

Contact [Willinghambowlsclubsec@gmail.com](mailto:Willinghambowlsclubsec@gmail.com)



## English Rose

BEAUTY HOUSE

### BEAUTY • SPA TREATMENTS • RELAXATION

Specialists in Shellac Nails, Bio Sculpture Nails, Manicures & Pedicures, Spray Tanning, Hair Removal, Eyelash Extensions, Facials, HD Brows, Waxing, Tinting, Make-up and Massage.

16 Berrycroft, Willingham, Cambridge CB24 5JX

Tel: 01954 261176 Email: [info@englishrosebeautyhouse.co.uk](mailto:info@englishrosebeautyhouse.co.uk)

[www.englishrosebeautyhouse.co.uk](http://www.englishrosebeautyhouse.co.uk)



# Murray Heating Services

## Commercial & Domestic



- ❖ **Boiler Servicing** from £65.00
- ❖ Natural Gas & LPG Servicing
- ❖ Gas Appliance & Heating System Fault Diagnosis & Repairs
- ❖ Boiler & Heating System Upgrades
- ❖ Compliance Checks & Landlords Certificates
- ❖ Catering & Laundry Equipment Maintenance
- ❖ Unvented Hot Water Cylinder Maintenance
- ❖ Plumbing Repairs
- ❖ Power Flushing of Heating System
- ❖ *Out of Hours & Weekend Appointments*

**Contact us for a quote today...**

**Tel: 07948 548492**

**email: [murrayheatserv@icloud.com](mailto:murrayheatserv@icloud.com)**

**Find us on [checkatrade.com](http://checkatrade.com) - Membership: 346442**

## Little Oak Wood Turning

Little Oak  
66 Station Road  
Willingham  
Cambridge  
CB24 5HG



### Wood Turning Studio

Using 20 years wood turning experience we have created a collection of unique items now available in a gallery in Willingham

### UNUSUAL GIFTS !

From functional to artistic, there is a wide range to choose from  
As each is hand crafted, products are unique and  
you will find an ever changing display

**Open every Mon, Wed, Fri 1 - 6 pm**

Happy to open the studio at other times inc. evening & weekends  
Please contact Michael or Eileen to arrange



Member of  
Cambridge Open Studios



[info@littleoak.org.uk](mailto:info@littleoak.org.uk)

[www.littleoak.org.uk](http://www.littleoak.org.uk)

01954 261773

## Becky's Fitness

The  
Ploughman's Hall  
Willingham

Zumba  
Aerobics 'n' Tone  
Body Conditioning  
Fitness Pilates  
Pilates

**FIRST CLASS FREE**

### Willingham timetable

Zumba/Aerobics 'n' tone 9.30am Monday

Zumba 7.30pm Wednesday

Aerobics 'n' tone 9.30am Friday

Pilates 10.40am Friday

07905 097961

[www.beckysfitness.co.uk](http://www.beckysfitness.co.uk)

[becky@beckysfitness.co.uk](mailto:becky@beckysfitness.co.uk)



# FECA IN WILLINGHAM

## WILLINGHAM WHEELS



Willingham Wheels Cycling Club, with help from Swavesey & Over Cycling Group, organised two donation bike rides on Sunday 16 June for the Over Day Centre. With both cycle clubs celebrating their 10th anniversary in 2019 and the Day Centre's 5-Pub Challenge fundraising walk also in

its 10<sup>th</sup> year, this was a three-way celebration. It proved to be a very popular Fathers' Day activity, with 63 family members and 85 cycle-club riders from several local villages enjoying the event.

The 52-mile route for serious riders took them from Over to Hilton, Bourn, Old Wimpole, Shepreth, the notorious Chapel Hill, Barton, Girton, Cottenham and Willingham – to name but a few. Families and casual riders followed the cycleway from Over to the guided busway, to enjoy a cake and drink stop at the St. Ives bus terminus, to then return, completing a total of 8.5 miles. All riders returned safely (they were carefully checked out and in), so no one was lost!

Both rides ended at The Green, Over, where riders and families enjoyed a lively social event. All donations and proceeds have gone to the Over Day Centre. The total raised was in excess of £3,000, so a big thank you to everyone who took part.



## Willingham Post Office

15 High Street, Willingham CB24 5ES

☎ 01954 260331

**Mon–Fri 08.30–18.00 Sat 08.30–15.30**

- All mail services, including special delivery
- Travel Currency - US Dollar & Euro plus others in branch. Fast Travel Currency order service available!
- Travel Money Card, Travel Insurance and MoneyGram
- Gift Cards for most occasions
- Passport Photographs, Passport Check and Send Service
- International Driving Permits and Vehicle Tax
- Financial Products – Insurance, ISA, Growth Bonds, Credit Cards and much more
- Broadband and Phone Packages, Phone Top-Ups
- Bill payments
- Document Certification Service
- Free Cash withdrawals for most major Banks as well as Cash & Cheque Deposits
- Photocopying and Laminating Service
- Great range of Greeting Cards, Stationery and Pack & Post Items

Vintage  
travel

ESTABLISHED  
1990

Your Local  
Travel  
Company



## HANDPICKED VILLAS WITH POOLS

A selection of beautiful individual villas  
& houses with pools in tranquil settings  
& areas of traditional local culture.

Call for a brochure or to speak to one  
of our specialists **01954 261431**

or visit our website  
[www.vintagetravel.co.uk](http://www.vintagetravel.co.uk)

GREECE • SPAIN • LANZAROTE •  
BALEARICS • PORTUGAL • TURKEY •  
FRANCE • ITALY • CROATIA



ABTA  
ABTA No V5643





# POLARGLAZE LTD

Highest Quality Windows, Doors & Conservatories

*Contact our sales team to view our PVCu, aluminium  
& timber product range*

*Leading local independent company since 1974*

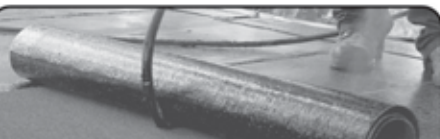
## SHOWROOM AND FACTORY

**Unit D, Denmark Rd, Cottenham, Cambridge, CB24 8TX**  
Entrance opp. Chequers Pub

# Tel: 01954 251290



24hr answerphone | Fax 01954 252900  
sales@polarglaze-ltd.co.uk www.polarglaze-ltd.co.uk



# JRS

## ROOFING SERVICES

### Flat Roofing Specialist

All flat roofing undertaken –  
felt, single ply and liquid plastics

All redecking and lead work • Repointing of chimneys

Fascias, soffits and guttering

General house maintenance

Insurance work • Free advice and quotations

All work guaranteed • Friendly efficient service

**Tel: 01954 201088**  
**Mobile: 07885 030 547**



**LEEWAY BUILDING SERVICES LTD**

Property Extensions, Renovations;  
Conversions and Alterations

All aspects of building work undertaken;  
specialising in extensions, conversions,  
alterations, garage and loft conversions,  
underground drainage work, heating  
systems, re-wires, general plastering,  
replacement windows, soffits, fascias  
and guttering.

North View, 43 High Street,  
Rampton, Cambridge CB24 8QE

**Telephone: 01954 251164**

**Mobile: 07766 553484**



info@leewaybuildingservices.co.uk  
www.leewaybuildingservices.co.uk

# PARISH COUNCILS

## COTTENHAM PARISH COUNCIL

### Neighbourhood Plan

Following the Regulation 16 consultation we have provided a response to some clarification questions by the independent examiner. We are now working through the response to the broader set of public representations and expect this part to be completed over the summer.

### Major Building Developments

**Bellway** Stage 2 roadworks (between The Rowells and Histon Road) to widen the existing footway on the north side to allow shared walking and cycling is scheduled to be completed by 1st September.

**Persimmon** is working through sign off of its conditions. Apart from the 121 houses permitted on site, they will undertake the radical re-engineering of the Oakington Road/Rampton Road roundabout and various traffic-calming measures along those roads later this year.

**Gladman** has not yet made clear how it will meet its 9 August deadline for submission of an acceptable Reserved Matter application.

**This-Land** met us several times in an attempt to find an acceptable way to meet both their and our concerns. The meetings were constructive and the proposals seemed to align closely with our aspirations for development of the space. However talks have stalled possibly due to planning obstructions to encroachment into Les King Wood, the proposed housing density and acceptability of a floodlit all-weather surface.

### Village Hall/Nursery update

Following receipt of six sets of tenders for the project, none of which were affordable within our debt envelope of "borrowing up to £2.8 million for up to thirty years, financed by the supplementary precept of £1/week/Band D home etc." a "value engineering" exercise has been undertaken involving representatives from our architects, consulting engineers and the preferred builder.

The exercise reviewed the various features and functionalities, testing whether each is really necessary and/or can be achieved more cost-effectively in some other way, while retaining the general appearance and functionality of the design as we know it, even if the long-term capacity may have to be restricted in some way. At the time of writing a long list of suggestions is being evaluated alongside a closer look at contributions from our financial reserves, probable s106 developer contributions, borrowing powers, possible grants and likely net income to see if the gap can be closed sufficiently to bring a modified proposal to Council over the summer.

## Highways

Further to our successful LHI bid, County Highways are now preparing draft designs for the traffic calming on Histon Road.

### New Councillor

We are pleased to welcome Peter Hewitt to the council following the resignation of David Mudd. David was a long-standing councillor and we thank him for his contribution over the years.

### Defibrillator

A new community-access defibrillator has been installed in the phone box near the Denmark Road/High Street junction. In an emergency when you dial 999 you will be given the access code for the equipment.

**Jo Brook**, Parish Clerk, [clerk@cottenhampc.org.uk](mailto:clerk@cottenhampc.org.uk), 07503 328401

[www.cottenhampc.org.uk](http://www.cottenhampc.org.uk),

[www.facebook.com/cottenhamparishcouncil](https://www.facebook.com/cottenhamparishcouncil)

## RAMPTON PARISH COUNCIL

### Recreation Ground

There have been a number of improvements recently on the Recreation Ground. The new equipment installed in the toddler play area has been appreciated by local and visiting families. The Multi-Use Games Area and court have been cleaned to improve the condition of the surfacing and the grass cutting regime has been increased so that the pitch area is now a good place to play sports games.

### Events on the Green

The Rampton '77 Committee in collaboration with the Rampton Fairies have once again pulled together an enjoyable afternoon enjoying tea on the Green with a little sparkle and plenty of good companionship. The Summer Fair after a year's breather has been back in action.

### Councillor Vacancies and other roles

Anyone that enjoys life in Rampton and feels that they could contribute to the village is encouraged to speak to the clerk or one of the councillors, who are always keen to discuss ways of improving the lives of residents and improving the environment that we live in. The council is pleased to support a new volunteer Tree Warden in the village, so thank you to the individual who has agreed to take on the role. The council at the end of June 2019 has two casual vacancies for councillors.

To contact the clerk, please email [ramptonparishclerk@gmail.com](mailto:ramptonparishclerk@gmail.com)

For Village events and Rampton Parish Council information, visit [rampton.org](http://rampton.org)



# Crossways Garage

## Oakington

**Tel No (01223) 233003**

*Service, Repairs & Tyre Fitting to All Makes of Vehicles and Light Commercial*

Approved MOT Testing Station

CROSSWAYS GARAGE  
Tel: 01223 233003  
Proprietor: DJ PEGG

TRADE MARK

New Motor Industry Indemnity

## CAMBRIDGE POND CLEANING SERVICE

**Pond problems?  
We can help!**

**Over 20 years experience.**

**We do the mucky jobs you hate, so  
your fish enjoy a clear healthy pond.**

**Pond Design**

**Pond Vacuum Cleaning**

**Filter Cleaning Water Testing**

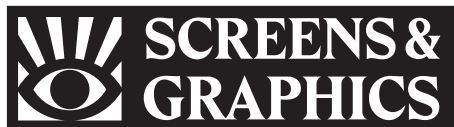
**UV Servicing Liner Repair**

**Green Water Problems**

**See Web site or call 07428 633664**

**[www.cambridgepondcleaningservices.co.uk](http://www.cambridgepondcleaningservices.co.uk)**

**OAP Discounts**



**SPECIALIST SCREEN & DIGITAL PRINTERS**

**PANELS • MOULDINGS**

**OVERLAYS • LABELS**

**EXHIBITION DISPLAYS**

**POSTERS • BANNERS**

*prototype to production*



**01954 251790**



**[mail@screensandgraphics.co.uk](mailto:mail@screensandgraphics.co.uk)**



**[www.screensandgraphics.co.uk](http://www.screensandgraphics.co.uk)**

# PARISH COUNCILS

## **WILLINGHAM PARISH COUNCIL**

### **Chair and Vice Chair**

The Parish Council elected a new Chairman and Vice Chairman at its annual meeting in May and we are pleased to welcome to post Councillor David Carlton (Chair) and Councillor Derek Law (Vice Chair). The Council sincerely thank Councillor Phil King for all his efforts during his various appointments over the years as Chair and Vice Chair.

### **Multi Use Games Area (MUGA)**

Willingham Parish Council are considering providing a MUGA for the village and recently put out a survey on its possible uses. The results will help us understand which sports that should be included. The MUGA will be partly funded by money from the new developments in the village. We will be applying for grant funding to make up the rest.

### **District Council Surgeries**

Our District Councillors Dawn Percival and Bill Handley hold regular surgeries that are open to parishioners to come along and raise any concerns

they may have. The next two surgeries are scheduled for **Saturday 9 September** and **Saturday 2**

**November**. Both will be held in the Ploughman Hall, West Fen Road and will run from 11am–1 pm.

### **Parish Clock**

A major overhaul of the clock is now complete and the clock is running very well. As with Big Ben the pendulum swing is adjusted with small weights that make a difference of only a few seconds a day. We hope to have the clock accurate to within half a minute throughout the day, just as it would have been when originally installed in 1887.

### **Parish Council Meetings**

these are held on the 1st Wednesday of the month and all parishioners are welcome to attend and have the opportunity to speak during the public forum.

The upcoming meeting dates are: **7 August, 4 September, 2 October and 6 November**.

Meetings are held in the Octagon at St Mary and All Saints Church, Church Street.



**Richardson Tree Surgery is a family business with over 40 years' experience of domestic and commercial arboriculture.**

All of our work is carried out professionally and reliably by our experienced and friendly team.

- Council and College approved • Fully qualified and insured
- Free estimates

**01954 203836 | 07799 386005 | [edward.rts@hotmail.co.uk](mailto:edward.rts@hotmail.co.uk)**  
**[www.richardsontreesurgery.co.uk](http://www.richardsontreesurgery.co.uk)**

**76 Hillcrest, Bar Hill, Cambridge, CB23 8TQ**

## Universal Fencing Co Ltd

Established  
30 Years

Tel: 01954 230860  
Mob: 07786 012990

[www.universalfencing.co.uk](http://www.universalfencing.co.uk)

SUPPLY ONLY OR SUPPLY AND ERECT  
FREE ESTIMATE



Palsade



Featheredge



Field Gates



Security Fencing

8 Arthur Court, Norman Way, Over, Cambridge, CB24 5AL  
Open: MON-FRI 7.30am – 5pm

**Commercial, agricultural, industrial & domestic  
Fencing contractors**



## Heaven Scent

43 Telegraph Street, Cottenham, CB24 8QU

Sports Massage  
Swedish Massage  
Facials, Make-up  
Electrolysis, Waxing  
Manicures and Pedicures  
Lash and Brow Tints  
Lash Perm, Ear Piercing  
Gift Vouchers

Telephone: 01954 200130

Mobile: 07925169697

Email: [helenehautrey@hotmail.com](mailto:helenehautrey@hotmail.com)

Website: [www.heavenscentuk.com](http://www.heavenscentuk.com)

Helene Gautrey  
BTEC National Diploma  
in Beauty Therapy (2002)  
VTCT Diploma in Sports Massage  
BABTAC



**IVETT & REED®**  
QUALITY SET IN STONE

[www.ivettandreed.co.uk](http://www.ivettandreed.co.uk) • 01223 213500  
615 Newmarket Road, Cambridge CB5 8PA  
Open Mon-Fri • FREE parking



At Ivett & Reed we've been creating bespoke fireplaces since 1896, so why not visit our stunning Cambridge showroom? We have hundreds of eye-catching fireplaces on display, and for a truly professional finish to your project, we employ our own HETAS registered fitters to offer a comprehensive and expert installation service.

FIREPLACES • FIRES & STOVES • WORKTOPS • MEMORIALS • STONework



# FEN EDGE FESTIVAL

## FEN EDGE FESTIVAL

What a fantastic festival it was! Right from the start on Friday 21 June, with the Pre-School Fun Day and then Tea on the Green (when 140 people senior citizens tucked into a smashing afternoon tea provided by Cottenham Day Centre) everything was set fair for three days of non-stop festivities at this year's Fen Edge Festival, organised by the Fen Edge Community Association under the banner of Carnival.

That night the summer dance, organised by Cottenham Primary School's PTCA, was a stunning success: live music, pizzas, kebabs, doughnuts and ice cream, a licensed bar – all creating the 'opening event' the Festival is renowned for. Early on Saturday, I began my first shift as one of the over 100 volunteers. The atmosphere was great. Everyone was happy and relaxed: the rain had gone, the air was warm and the sun on its way. Already individuals and groups from the Fen Edge's five villages that had responded to FECA's invitation to join in were setting up their activities and wares. And what temptations there were, not just on the Village Green but also in front of, and in, the Village College. I didn't know which way to turn for there was so much going on!

The most eye-catching attraction was the magnificent 19th century Steam Carousel, one of the last working in the country and still letting off steam joyously. At the College I was especially impressed by the Adult Learning Arts & Crafts display – what a clever lot of people we have in the Fen Edge – and young artists' exhibition. Nearby the recycling enthusiasts were getting down to the nitty gritty at the Repair Café. The College also had a wonderful Carnival Café, a play area, roundabouts, Giant Scalextric and Retro Gaming, crazy golf and – big attraction – 'Squirt' from the Cottenham Fire Brigade. What is it about kids and fire engines? Lots of pix were taken to record that they were there.

On the green it was action all day. It would have disconcerted the comedian W C Fields – he who said



*Victoriana and the medieval in action*

"never work with children or animals" – for they were there in abundance. The Fen Edge Dog Show was a wow and the youngsters were tremendous, showing off their skills at Tae Kwon-Do, at gymnastics, at sculpture, dance displays, performing arts, even a medieval battle. Mr Marvel's magic show and Gameshow Disco brought smiles of delight to little faces.

If the welcome warmth brought on thirst, there to quench it were the Cottenham Guides stall (raising funds for Macmillan cancer charity), the Pimm's tent run by Ladybird Pre-school, real ale from Fellows Brewery, Fairtrade coffee and tea. The hungry were spoiled for choice: cakes, kebabs, finger food from Poland, India and even Dominica, vegan and vegetarian snacks, artisan breads, a BBQ, bacon sandwiches, pizzas. Plus carnival favourites candy floss, popcorn and coconuts!

The resounding rhythms of the Fruity Clave Samba Band enthusiastically enhanced the carnival atmosphere. And there was endless talent at the Venue: buskers of all ages, singers and performers, comedienne (hurrah to Chloe and Barbara!) – such fabulous entertainment.

The Main Marquee was a magnet: contemporary and Irish dancing, community-based Singing for Fun, the glorious tones of TyrannoChorus (Saturday) and bigMouth and VoxPop (Sunday). How blessed we are in our neck of the woods to have musical groups such as The Fen Edge Orchestra, Junior Brass and Cottenham Brass bands.

*continued on page 55*



# BC Landcrafts &

- PATIO & DECKING - INSTALLATION & MAINTENANCE
- DRIVEWAYS - INSTALLATION, EXTENSION & MAINTENANCE
- LAWNS - TURFING, SEEDING & ARTIFICIAL
- FENCING & GATES - DOMESTIC, AGRICULTURAL, SECURITY
- GARDEN DESIGN & BUILD PROJECTS
- PONDS & FEATURES - INSTALLATION & MAINTENANCE



**Contact Ben Carter on**

**Tel: 01954 250830 Mob: 07836 654252**

**Email: [ben@bclandcrafts.co.uk](mailto:ben@bclandcrafts.co.uk) Web: [www.bclandcrafts.co.uk](http://www.bclandcrafts.co.uk)**



**clearglass**

bespoke glassworks

**01223 211888**

**[sales@clearglass.org.uk](mailto:sales@clearglass.org.uk)**

**[www.clearglass.org.uk](http://www.clearglass.org.uk)**

## FOR ALL YOUR GLASS AND GLAZING NEEDS

- Glass splashbacks and wall coverings
- Shower screens and enclosures
- Balustrades and balconies
- U - V bonding
- Mirrors
- Traditional leaded and stained glass
- Replacement of misty double glazed units
- Cut glass and greenhouse glass
- Glass shelves made to measure
- Safety glass

**FOR MORE INFORMATION OR A FREE QUOTATION  
CONTACT US OR VISIT OUR SHOWROOM\***

**Unit M, Broad Lane Industrial Estate, Cottenham, Cambridge CB24 8SW**

\*For opening hours see our website

# FEN EDGE FESTIVAL

*continued from page 53*

By Sunday evening, all too quickly, it was over and the hard-working committee, under the fantastic leadership of festival Chair Lucy Dumbrell, quietly disassembled all that had entertained us at what many agreed was the best-ever Fen Edge Festival. As families and friends sat in the warm air, tucking into pizzas and burgers, wine and beer, the Sandy Ukulele Group serenaded us with a fitting farewell of singalong songs. There was a lot going on at the Cottenham Community Centre too, but I just couldn't be everywhere at the same time! Perhaps – in two years time – an electric scooter will help.

## **Wendy Dear**

PS—There are many people to thank for their incredible input into the Festival, from the

many sponsors and supporters through to the dedicated volunteers who clocked up many hours (did you say 54, Tom?) but I don't have room to say any more.



*Fen Edge Orchestra*



# Imagine...

## ...a nursery where all children blossom

Care, discovery and learning are at our heart, in welcoming indoor and adventurous outdoor environments. **We provide a home from home for your child** – in a safe, secure, fun and caring environment.

[www.beachbabiesnursery.co.uk](http://www.beachbabiesnursery.co.uk)



Introducing

**logik** 

## Flush Sash

A brand new uPVC window with a fully-flush external sash offering the appearance of timber windows with none of the maintenance.

Available exclusively  
from *elglaze*

Find out more at  
[www.elglaze.co.uk/flush](http://www.elglaze.co.uk/flush)  
or call 01487 741022

## Colours & Finishes



Choose from a wide range of woodgrain finishes and contemporary colours including a through-colour grey frame for a consistent look

## Eco-Conscious



Logik S Flush Sash windows are made from recycled materials and have a high thermal efficiency helping you to combat energy waste in your home.

## Showhomes Required

We're looking for homes to showcase this fantastic window. Discounts available for participants. Contact the team on 01487 741022 to find out more.

*elglaze*  
est. 1983

Windows - Doors - Conservatories

Your home.  
Our heritage.



**be delicious!**  
with  
**Slimming World**

### TUESDAYS

#### COTTENHAM

All Saints Village Hall  
9:30am or 11:30am

#### HISTON

Baptist Church  
5:30pm or 7:30pm

### THURSDAYS

#### COTTENHAM

The Cottenham Club  
7:30pm

Call Karen: 07742 680964

Email: [karenjaynenewell@gmail.com](mailto:karenjaynenewell@gmail.com)

FB: Slimming World Cottenham & Histon

[slimmingworld.co.uk](http://slimmingworld.co.uk)



0344 897 8000





# FEN EDGE GROUPS

## FEN EDGE TWINNING ASSOCIATION

It's never too late to make new friends!

Having lived in Waterbeach for more than a decade, it came as news to discover that the village is twinned with Avrillé, in the Loire Valley, France, as part of the Fen Edge Twinning Association which includes Cottenham, Landbeach, Rampton and Willingham. The Association has been happily twinning for twenty-one years and great friendships have been forged in that time.

Although my French is a bit rusty, I decided to give it a go and boarded the coach at Cottenham with about thirty-five others, ages eight to eighty: couples, families, and others like me travelling on their own.

The visit took place over the May Bank holiday weekend and comprised a mixture of organised events and time with the host family. After the extravagant celebrations for our 20th anniversary last year, the programme was more relaxed this year. In smaller groups, our hosts

took us to see some of the local delights, including rose gardens, river cruises and the castle of nearby Angers. As always, our French host families welcomed us to their homes and treated us to delicious food, wine and company. Despite many different levels of French and English, we mixed together well at the dinner table and on the dance floor (at their version of a Ceilidh). Amongst the laughter as the EU election results came in, we were reminded of the importance of such links.

I came away absolutely heartened by the experience and would recommend it in a blink.

The French return in May 2020. If you would like to know more about FETA or how to get involved, please email [fenedgetwinning@gmail.com](mailto:fenedgetwinning@gmail.com)



*French and Fen Edge Friends Reunited – May 2019*

## FEN EDGE ORCHESTRA

Is your old musical instrument gathering dust in the attic, abandoned since it was last played at school long ago?

Would you like to play again, but feel a bit nervous about playing with other people? Worry not. Fen Edge Orchestra is full of people like you! We are an informal, friendly group who work hard, but have fun too. We play a wide variety of music, from classical symphonies to pieces arranged specially for us by our long-suffering conductor, Evan Turner. We also have occasional social events too, such as curry evenings and barbecues.

We usually give concerts twice a year, which are well received by family, friends and some

unsuspecting members of the public! We don't charge for entry, and once a year we raise money for a charity chosen by a member of the orchestra. Our recent Summer Concert took place in Cottenham Parish Church and included music by Dvorak, Vaughan Williams, Butterworth, and Schubert. The next concert will be in February. At the moment we have places for violins, violas, double bass, french horn, trumpet and flute. Why not take a look at our website [fenedgeorchestra.wordpress.com](http://fenedgeorchestra.wordpress.com) and get in touch? Hopefully you will be invited to come along to a rehearsal in Cottenham Village College on a Wednesday evening. We rehearse during school terms and there are no auditions.





Plumbing and heating supplies  
to the trade and public



We are a local independent company supplying  
all your plumbing & heating needs, including:

**Bathroom Taps • Boilers • Bathroom Suites  
Underfloor Heating • Central Heating Radiators  
Heated Towel Rails • Showers • Kitchen Taps  
Sinks • Baths • Sanitaryware  
Plastic Plumbing Systems • Fittings**

*Do not hesitate to ring, email or visit...*

Unit 10, Norman Way Industrial Estate, Over, Cambridge CB24 5QE  
Tel: 01954 230268 E-mail: [info@dandtsupplies.co.uk](mailto:info@dandtsupplies.co.uk) [www.dandtsupplies.co.uk](http://www.dandtsupplies.co.uk)



## B R Unwin Brickwork & Building Contractors Ltd.



Specialists in extensions, renovations and conversions

**Phone:** 01954 201 556 **Mobile:** 07759 621 390

[bruce@brunwinbrickwork.com](mailto:bruce@brunwinbrickwork.com) [www.brunwinbrickwork.com](http://www.brunwinbrickwork.com)



## FEN EDGE GROUPS

### STITCHWILD

StitchWild, a friendly Fen Edge group of creative textile artists, was excited to welcome Cas Holmes for a workshop at Rampton Village Hall on 6–7 May 2019. Cas, one of the UK's most renowned textile artists, hails from Kent, and describes her work as painting with cloth and stitch sketching; with an emphasis on the use of vintage, found, recycled, or sustainable materials. For the workshop, Cas demonstrated how to develop our own approach to textile art and our chosen subject, based on themes that resonated with each of us individually. The sea, local scenes in Cambridge, scenes observed on daily walks and memories of family members were just some of the themes artists in the group chose to use. She then demonstrated a technique for image

transfer using a simple paper lamination technique. We each chose a paper based image, such as a photocopy, magazine page, or inkjet print. Using an acrylic based medium such as acrylic gel, gesso, or even emulsion, we learned how to transfer the image to a cloth substrate. Cas then suggested further techniques to develop our stitch story by applying additional layers of found textiles, paper ephemera and stitch to bring our work together into a cohesive work. Although an intense weekend of work, club members learned a lot and many will incorporate this technique in future work. As Cas says, 'Be open to challenge and change. Give things a go and dare to create.'



Cas's work can be seen on exhibit at various locations in the UK. For more information, see [www.casholmes.co.uk](http://www.casholmes.co.uk)

## RAMPTON MOTORS

**Repairs and Servicing to All Makes of Car and  
Light Commercial Vehicles**

Petrol & Diesel MOT Testing by appointment

Free Courtesy Car Available

Petrol, Diesel and Oil sales

Mon to Fri 7.30am to 5.30pm

---

8 The Green, Rampton, Cambs CB24 8QB

**Tel: 01954 250792**

**Fax: 01954 206046**

## MOBILITY EQUIPMENT

SCOOTERS, WHEELCHAIRS, RISER/RECLINER CHAIRS, BEDS,  
WALKERS, FOOTWEAR, TOILET & BATHING AIDS, KITCHEN &  
HOUSEHOLD AIDS, CONTINENCE CARE, CUSHIONS, STAIRLIFTS  
AND MUCH MORE

HOME VISITS AVAILABLE  
EQUIPMENT HIRE, SERVICING AND REPAIR  
FRIENDLY AND CONSIDERATE SERVICE GUARANTEED



Scotsdales Garden Centre  
Horningsea, Cambridge  
CB25 9JG

Tel: 01223 863908  
[www.orchard-mobility.co.uk](http://www.orchard-mobility.co.uk)  
Monday to Saturday 9 am - 5 pm



Louise qualified as a dog groomer at the College of West Anglia and groomed at a local parlour for 4 years before starting WaggleBumz in 2015. She has vast experience with most breeds of dogs.

*'Fantastic local dog groomers, a hidden gem – good prices, good groomers and my dog loves her visits and the home baked dog cookies'*

Give your dog a treat and book with me today **01954 252869**

Monday to Saturday 9am-5pm

67 Histon Road, Cottenham, Cambridge CB24 8UF

[www.wagglebumz.co.uk](http://www.wagglebumz.co.uk)

# FEN EDGE GROUPS

## ROTARY CLUB OF CAMBRIDGE SOUTH

### Business Forum in Waterbeach

Many business leaders find that networking with like-minded individuals can help them discover new ideas and motivation. Things get better, if those like-minded individuals also have a community spirit and are always looking for ways to 'put back' into their communities. And even better if those people are not trying to hard-sell their products or services to you.

That's the Rotary Business Forum. We're a friendly bunch of people with a common interest in business leadership and management, but equally determined to help each other and those less fortunate than ourselves.

We meet on alternate Friday mornings over breakfast at Waterbeach. See [www.rotarybusinessforum.org.uk](http://www.rotarybusinessforum.org.uk) or call Nick Hadley on 07984 388093.

Also please see the website <http://www.cambridge-southrotary.org.uk> if you would like to know more about Rotary – whose motto is "Service above Self" and main worldwide aim to eradicate Polio world-wide within the next few years.

Our club meets on Mondays (except bank holidays) at 5.45pm for 6.15pm at the Arundel House Hotel Cambridge with great speakers. New potential members are very welcome.

### Football for the homeless

70 players from local homeless organisations, along with their supporters, looked forward to the 2019 10<sup>th</sup> Annual Tournament Day on 19 May.

This year was again a great success. The Abbey Pool's Astro Turf Pitches (kindly made available by the Cambridge City Council) played host to the 10<sup>th</sup> annual Tommy McLafferty Cup – a 5-a-side football tournament involving homeless people and volunteers. Joint organisers were the Rotary Club of Cambridge South, Cambridge Link-Up, Wintercomfort for the Homeless and Jimmy's. Players and spectators all said that they had had an inspiring and fun day.

More volunteers are needed for charity car parking – if you could spare a few hours and would like to help at Christmas 2019 please contact [smithmichaelstanley@hotmail.com](mailto:smithmichaelstanley@hotmail.com)



LYNX AUTOCARE



**Service, MOT, Tyres, Exhaust, Batteries, Air Conditioning.**

Unit 1, Ely Road, Waterbeach, Cambridge CB25 9PG  
[lynxautocare.co.uk](http://lynxautocare.co.uk) 01223 861684



# Complete Kitchens Ely

*Design > Supply > Install*



5 out of 5

Based on the opinion of 50 people



**FREE HOME MEASURE AND DESIGN VISIT**

 **01353 860879**

Black Bank Business Centre, Black Bank Road,  
Little Downham, Ely, CB6 2UA.



[info@completekitchensely.co.uk](mailto:info@completekitchensely.co.uk)  
[www.completekitchensely.co.uk](http://www.completekitchensely.co.uk)

**QUALITY GERMAN  
AND UK KITCHENS**



**FLINK™** gives you more potential buyers,  
which means a better price for you.

**FLINK** from haart is an exclusive technology that  
cleverly uses social media to find potential buyers.



Want to find out more?

Call haart on:

Cambridge 01223 365 931

Bar Hill 01954 781 411

Or visit [haart.co.uk/flink](http://haart.co.uk/flink)

**FLINK™** from **haart**  
Finding the buyers other agents don't.

## IVETT & REED

### QUALITY SET IN STONE

Ivett & Reed is a family business which has been creating  
and fixing *quality memorials* for East Anglian  
parishes since 1896, delivering service with sensitivity.

All memorials are *crafted in our own workshops*,  
drawing on over a century's worth of knowledge, skills and  
experience to help you make your decision.

Our *dedicated memorial showroom*, one of the  
largest in the UK, displays a selection from our vast range of  
headstones, plaques and vases. In addition we carry out  
all kinds of renovation work.



615 Newmarket Road, Cambridge CB5 8PA TEL: 01223 213500 WEB: [www.ivettandreed.co.uk](http://www.ivettandreed.co.uk)  
Monday to Friday 8.30am – 5pm (closed weekends and bank holidays)  
Free parking

Let me help you  
**wow your customers**  
with designs tailored  
to your needs //

I'm Steve Davies, a graphic designer based in Cambridgeshire. I provide tailored design solutions for businesses of all shapes and sizes, or for individuals looking for a one-off bespoke design for that special occasion.

With nearly 20 years experience creating everything from logos and business cards to large format graphics for events and exhibits, I work closely with my clients to fully understand their requirements and to appreciate what really makes their customers tick. No job is too small and each and every one is given the same creative and collaborative treatment.

If you have a project you wish to discuss or to request a price list, drop me a line. I'd love to hear from you:

**studio@stevedaviescreative.com**

...in the meantime, why not take a look at some recent work on my website:

**www.stevedaviescreative.com**

**SAY HELLO...**

e: **studio@stevedaviescreative.com**  
w: **www.stevedaviescreative.com**  
m: **07738 159653**



**CORPORATE  
IDENTITY**



**BUSINESS  
CARDS**



**CORPORATE  
STATIONERY**



**BROCHURES  
& FOLDERS**



**MARKETING  
MATERIAL**



**POSTERS  
& BANNERS**



**FLYERS  
& MAILERS**



**MENUS  
& SIGNAGE**



**EVENT  
GRAPHICS**



**RETAIL  
GRAPHICS**



**GREETING  
CARDS**



**WEDDING  
STATIONERY**



## BEST INDIAN RESTAURANT IN UK

National Champion of Champions Award  
Asian Restaurant and Takeaway Awards 2018



**T: 01954 250 257 / 252 506**

215 HIGH STREET, COTTENHAM, CAMBRIDGE CB24 8QP

**[www.currypalacecottenham.co.uk](http://www.currypalacecottenham.co.uk)**

SEE OUR WEBSITE FOR ALL OFFERS AND PROMOTIONS



[www.facebook.com/thecurrypalacecottenham](https://www.facebook.com/thecurrypalacecottenham)



[twitter.com/currypalaceUK](https://twitter.com/currypalaceUK)



[www.tripadvisor.co.uk/Restaurant\\_Review-g186225-d2542393-Reviews-Curry\\_Palace-Cambridge\\_Cambridgeshire\\_England.html](https://www.tripadvisor.co.uk/Restaurant_Review-g186225-d2542393-Reviews-Curry_Palace-Cambridge_Cambridgeshire_England.html)



iOS App



Android App

## *Fitzwilliam House Care Home*

Fitzwilliam House is a 40-bedded, homely and welcoming care home located in Cottenham, Cambridge. Our care home offers a dementia support group for relatives and the local community, as well as a large accessible garden, friendly pets and a varied and enriching activities programme.

Please feel free to come and meet us, or call us for a friendly discussion around your requirements:-

**FITZWILLIAM HOUSE CARE HOME**

COTTENHAM

01954 273 310



*Excelcare*  
The premier care provider

[www.excelcareholdings.com](http://www.excelcareholdings.com)  
[info@excelcareholdings.co.uk](mailto:info@excelcareholdings.co.uk)



# Target Print Ltd

DIGITAL AND LITHO PRINTING

## Quality printing to fit your budget

Newsletters • Brochures • Flyers • Letterheads • Compliment Slips • Invoices • Statements  
Purchase Orders • Manuals • Business Cards • Folders • Booklets • Posters • Postcards  
Envelopes • Continuous Stationery • Menus • Invitations • Labels • Fen Edge News  
and much more ...

Broad Lane, Cottenham, Cambridge CB24 8SW

Telephone: **01954 251189**

[print@targetprint.org](mailto:print@targetprint.org)

[www.targetprint.org](http://www.targetprint.org)

# Cambridge Executive Cars

*Est.2005*

**Delivering you and  
quality, door to door**



Based in Willingham, we are your mid to long distance Executive travel service specialists.

We service all airports, seaports, corporate events, London and much more for no extra cost than a standard taxi. So why not travel in style with us, your local company?!

Call or email for a quote today...

[Bookings@cambridge-executive-cars.co.uk](mailto:Bookings@cambridge-executive-cars.co.uk)

Richard on 07782 130 380.



[www.cambridge-executive-cars.co.uk](http://www.cambridge-executive-cars.co.uk)



☎ 01223 861698

## When Experience Matters

Your trees are in safe hands with Acacia Tree Surgery the leading East Anglian tree care specialists. We have been providing tree care services since 1985, supported by an expert team of arborists with over 100 years combined experience.



### Services

We provide services and surveys for private clients and commercial companies including local authorities, Universities and Colleges, the National Trust, housing associations, letting agents and developers.

### Competitive Prices and Professional Guarantee

You will find our prices and terms highly competitive. We offer a FREE no obligation quotation with advice and guidance on the management and care of your trees.

### Complete Customer Care

It is our company policy to deliver the best customer experience with a professional, friendly and a helpful service. This is a service that goes beyond tree surgery and manages the entire project including planning applications and liaising with local authorities, police divisions, utility services and your neighbours.

### About us

We are trusted tree surgeons covering four family generations. Acacia is now established as a class leading surgery with a reputation for quality tree services and consultancy.

You will find our fully trained staff knowledgeable and helpful. We complete work to industry standards and best practice. All sites are left clean, safe and tidy.



We remain committed to providing our increasing network of satisfied clients with an efficient, friendly and helpful service where private, public and commercial clients can feel confident in relying upon our expert knowledge.

Tree Surgery  
Tree Preservation  
Tree Consultancy  
Planning  
Tree Surveys  
Management  
Stump Removal  
Pruning & Shaping  
Insurance Reports  
Mortgage Reports



Seasoned firewood  
available all year

For a FREE no obligation quotation call 01223 861698